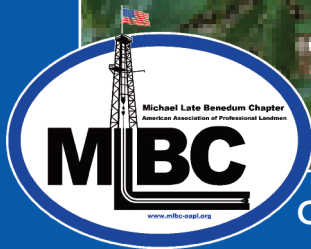


Michael Late Benedum Chapter

AMERICAN ASSOCIATION OF PROFESSIONAL LANDMEN

the TAKE-OFF

October • 2017



ON OUR COVER: ENERGY LAND MANAGEMENT AT WVU, PG 12

Also Inside: MLBC Social Events • Special Thank you to Tara

| | |
|--------------------------------|----|
| Letter from the president..... | 3 |
| Corporate Sponsors..... | 4 |
| Committee Members..... | 6 |
| The Hill..... | 8 |
| Executive Committee | 9 |
| Director's Report | 10 |
| Energy Land Mgt. at WVU | 12 |
| Social Events | 14 |
| Member Spotlight..... | 16 |
| Committee Chairs..... | 18 |
| Special Thank You | 20 |

The TAKE OFF is published by the Michael Late Benedum Chapter, American Association of Professional Landmen

MLBC
P.O. Box 955
Bridgeport, WV 26330

www.mlbc-aapl.org



ELM came to WVU out of necessity for a land program in the east. Former MLBC president and current Public Affairs Representative at Steptoe & Johnson Steve Perdue, CPL felt the need and in 2012, he initiated the process by meeting with a WVU representative to discuss the idea. From there, the ball started rolling rather quickly with the WVU Board of Governors approving the program in fall 2013 and a semester later beginning ELM classes for the first time. **See PG. 12**



The Executive Committee says goodbye to Executive Director, Tara White and wishes her well as she goes forward to face new challenges and opportunities. **See PG. 20**

letter from the president



Jeremy D. Preston, RPL

It certainly has been a busy couple of months. Our annual Fall Charity Golf Outing kicked off August, with this year's event held on the 7th at Valley Brook Country Club in Canonsburg, PA. Thanks to the generosity of the golfers in attendance and our sponsors, we were able to raise \$27,500 this year to benefit Big Brothers Big Sisters of Greater Pittsburgh! Not too shabby for a first time effort by our fall golf organizers Lee Hebert & Michael Yates. Our regular dinner meeting was held later that week on August 10th at the Hilton Garden Inn in Canonsburg, where attendees received a legislative update

from Danielle Waltz of Jackson Kelly.

Rounding out the month of August was a social opportunity at the Washington Wild Things game on evening of the 18th. It was a great evening to bring the family out to the ballpark. September took us to our dinner meeting at Marietta College where attendees were treated to a tour of the campus and an opportunity to interact with some of the students in the Land & Energy Management program. Our Education Chairman Morgan Griffith gave an interesting presentation on the history of oil and gas in the Marietta area and dinner speaker Stephen Bupp gave a great presentation on the landman's role in route planning.

Indeed busy, but a diverse offering of opportunities in keeping with the MLBC's purpose. It is the spirit and character of Michael Late Benedum that we as an organization are built upon. Integrity first and foremost with a dedication to the

professional development of the members that we serve and the betterment of our region as a whole. We do this by maintaining the highest ethical standards, providing valuable educational and social networking opportunities, contributing to the needs of our community through various charitable events, and cultivating our aspiring young land professionals. On November 9th we'll be in Morgantown for a luncheon at the Pines Country Club. Our speaker will be Scott McKernan of Babst Calland.

The 2017-18 schedule will provide many opportunities for networking and education. Be sure to check the schedule and make plans to attend. If you like to suggest an event in your area please feel free to contact myself, one of the ExCom members, or Chris Helmick, our planning committee chairman, via email at chelmick@eqt.com. We look forward to seeing you at one of our events!

*Jeremy D. Preston, RPL
President 2017-2018*

corporate sponsors

Platinum

Babst | Calland
Attorneys at Law



human energy™



EQT

ST STEPTOE
& JOHNSON
P.L.L.C.



Gold



Campbell Development L.L.C.

Holland
SERVICES



SEAN CASSIDY
& ASSOCIATES, P.C.



Cabot Oil & Gas Corporation

CLS
CONTRACT
LAND STAFF

VORYS

Higher standards make better lawyers.®



Silver

SWN
Southwestern Energy®

IGR Lewis Glasser
Casey & Rollins
P.L.L.C.
LAW OFFICES

Terra
TERRA SERVICES, LLC

| | |
|--|--|
| ARNOLD SCHULBERG ATTORNEY AT LAW | |
| 16591 Sagamore Bridge Way • Delray Beach, FL 33446 304.760.2345 aschulberg@schulberglaw.com | |
| OIL & Gas Leasing Due Diligence Right-of-Way Title Curative | HURON LAND SERVICES, LLC 304.760.2345 16591 Sagamore Bridge Way Delray Beach, FL 33446 aschulberg@schulberglaw.com |

Bronze



Clearwater
land services, llc

sponsorship levels

CORPORATE SPONSORSHIP LEVELS

Platinum \$5,000.00 per year

Benefits of Platinum Sponsor

- Logo on the corporate sponsor board at every meeting along with the meeting sponsor board.
- Logo on the back of every Takeoff and the bottom of every membership email.
- Receive three meeting/dinner passes for each meeting for one year.
- Receive one free Full Page advertising ad.
- Receive free Half Page ad in the takeoff per year.
- Logo on Golf Outing sponsorship boards.



Gold \$2,500.00 per year

Benefits of Gold Sponsor

- Logo on the corporate sponsor board at every meeting.
- Logo on the back of every Takeoff and the bottom of every membership email.
- Receive one free Half Page advertising ad in the Takeoff per year.
- Logo on Golf Outing sponsorship boards.



Silver \$1,500.00 per year

Benefits of Silver Sponsor

- Logo on the corporate sponsor board at six meetings.
- Logo on the back of every Takeoff and the bottom of every membership email.
- Receive one free Half Page advertising ad in the Takeoff per year.



Bronze \$750.00 per year

Benefits of Bronze Sponsor

- Logo on the corporate sponsor board at three meetings.
- Logo on the back of every Takeoff.



Advertising in The TakeOff

Full page ad \$500.00 per month

Half page ad \$250.00 per month

Dinner Meeting Sponsorship

Cost \$250.00 per meeting. Companies will receive advertising at the dinner meeting as well as your logo displayed on our website for the month of the meeting you sponsor.

To secure a corporate sponsorship, advertise in the Take-Off, or if you have any questions please contact Tara White at twhite@mlbc-aapl.org. Please contact Jeremy White at jwhite@eqt.com for dinner meeting sponsorships.

Our Committee Members Speak

Landmen and Relationships

By Britney Crookshanks, CPL MLBC Executive Committee Member



If you are working in oil and gas, chances are that some form of human relationship can be credited for your involvement with the industry, which is powered by professionals who are connected by ties of friendship and family. Land work is probably the most connected and intertwined facet of the industry. Personally, I am the third generation of landman from my family. My grandfather became a landman after he retired as a state trooper through his connections with some friends at Chevron. My father was a landman for a fleeting period of time (he worked harder on his golf game than his land game), and my mom has been in and around the land industry for almost 30 years. Personal connection defines land work both within the community of professionals and during the day-to-day duties of a landman.

H. Jackson Brown Jr. wrote a New York best seller entitled *Life's Little Instruction Book*, which is full of great advice including, "Don't burn bridges. You'll be surprised how many

times you have to cross the same river." This advice is useful in numerous aspects of life, but it especially resonates with the relationships you build throughout your career in Land. If you work as a contractor for a client and are successful, chances are you will reap the benefits of future work from the same client, or even the potential of a new project for another client through word of mouth. If you work in-house on a deal with a competitor and build a solid relationship, future deals you try to strike with that company are likely to be much smoother and perhaps result in a more desirable deal.

It is especially important for Landmen to be honest and ethical in the daily dealings with the public or within the oil and gas industry not only because it is the right thing to do, but also because your reputation as a Landman heavily relies on ethics. You heard from your parents or teachers growing up that it's important to make sure you maintained a good reputation, and the rules stand the same in your Land career. If you are associated with people or

companies who have not been ethical or have poor reputations within the industry, you run the risk of being guilty by association. You can work to improve your negotiation skills, which will make you a better landman, but healthy relationships and solid connections with people and companies is what will build your reputation as a great landman.

When I first started in the industry I was a lease buyer. I had enough knowledge of the oil and gas lease that I could explain the four corners of the document and answer the generic questions most lessors asked. I'll never forget sitting in this particularly grumpy lessor's living room doing my best to address all of his concerns. He asked me a couple of technical questions I had no idea how to answer. At first, I started down the path of trying to explain to the best of my ability exactly how the equipment was to be used, and let's face it, I had no idea what I was talking about! When I saw the look on his face shift into, "How did this woman get this job when she clearly has no idea what she is talking

about?” I realized I needed to just come clean. I explained to him that I wasn’t sure how to handle his questions and I would have to get back to him. I left that evening without a signature and instead a daunting task of trying to find answers to all these technical questions.

Luckily, my brother was working for a well service company at the time and was able to give me the run down and even helped me practice drawing out the process so I could better explain it to my inquisitive lessor. I headed back to his house with my well-rehearsed answers and was able to secure the lease. The lessor was so grateful I invested time into our relationship, and the impression I left on him ended up proving more beneficial to me than I realized at the time. I found myself having to deal with this same family four years down the road when settling property damages, and the negotiation tone was set from the beginning. Since our previous encounter created a healthy and solid relationship, our next negotiation was easy and quick.

This industry is ambiguous and forever changing. What is law today could be overturned and changed overnight. Current practices are different from years past and technology is always

improving our techniques. In most cases the Land department in a company or the Land work being done is a stepping stone from how something is going to get done to the actual act of getting it done. Due to Land work being so broad on the spectrum of the oil and gas industry, there are times a Landman can find him or herself entrenched in a single facet or area. For example, I started working in West Virginia after spending the early years of my career all over Pennsylvania, and now six years later I am headed back to Pennsylvania as a familiar player in a whole new game. So much has changed in the last 5-7 years that I am having to depend on my previous relationships and connections to catch me up on new regulations, laws and common practices. The fact that I have these connections has saved me hours of research and my company thousands of dollars in service fees.

Whether you work in-house for a large exploration company or you contract through a land service company, the relationships you build will follow you wherever you go. Maybe your job is to make sure the wells are drill ready, so you have to depend upon your connections and relationships with your land service crews or

your internal teams to ensure you are meeting your deadlines and getting the deals done. Or you maybe you work for a land service company and you have to lean on your networking and past relationships to secure future work. Either way, you reach out in your network through your connections and your relationships with others.

Being a landman really means being able to build and foster relationships, whether with people or companies, to get a deal done. The connections you make and the relationships you create throughout your career can help generate great success or steep hurdles to overcome.

If you foster healthy, lasting relationships with people in your network, and work hard at maintaining those relationships, it will benefit you for years to come. This industry is small, and the longer you work in it, the more it shrinks. Your reputation is always a short conversation away. Make sure you keep that in mind as you work on relationships and connections in your career and remember, you are going to have to cross that same river again and again, so make sure the bridge is in good shape!

House votes to block funding for EPA methane pollution rule



BY DEVIN HENRY
The Hill

Lawmakers voted Wednesday to block implementation of a key Environmental Protection Agency (EPA) pollution rule.

The House voted 218-195 to strip funding for an Obama-era EPA effort to limit methane emissions from new oil and gas drilling sites. Eleven Republicans voted against the amendment, and 3 Democrats voted to block funding for the regulation.

"This rule is currently facing litigation and uncertainty, and Congress must act to block this job-killing regulation estimated to cost the U.S. economy \$530 million annually," Rep. Markwayne Mullin (R-Okla.) said during debate on the measure last week.

"Methane emissions from oil and natural gas have significantly declined in recent decades without multiple, overlapping federal regulations, and this is no exception."

The EPA finalized its methane rule in early 2016 as part of an Obama administration effort to reduce emissions

of the pollutant, which has significantly more global warming potential than carbon dioxide. The rule was a critical part of Obama's second-term climate agenda.

Stripping the methane rule from the books has been a leading goal of the oil and gas industry. Drillers have argued they are able and willing to reduce methane emissions on their own and under state regulations. They say that federal rules will harm their bottom lines.

Republicans have largely backed the industry on the rule.

"The free market has provided an incentive to reduce methane release on its own," Rep. Paul Gosar (R-Ariz.) said during floor debate. "There is no further need for EPA to impose costly bureaucratic hurdles on these sensitive industries."

President Trump's EPA has proposed a two-year delay for the rule and public comment on the proposal closed last month.

The agency attempted to halt enforcement of the rule while it works to adopt the two-year delay, but federal judges have blocked an agency proposal to do so.

The EPA said afterward that it would

enforce the rule on a "case-by-case basis."

But Democrats are concerned the agency will not seriously enforce the rule.

Eight Senate Democrats last week called the EPA effort "an attempt to accomplish by an ad hoc enforcement approach what it could not accomplish through its unlawful stay."

Environmentalists and Democrats have defended the rule as an important effort to crack down on climate change-causing pollutants.

"There is no doubt at all that methane contributes to the increased levels of greenhouse gas concentrations, which contribute to the long-lasting changes in our climate, such as rising global temperatures, sea level change, in weather and precipitation patterns and changes in the ecosystem's habits and species diversity," Rep. Betty McCollum (D-Minn.) said during floor debate.

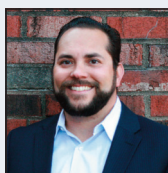
Mullin's amendment was attached to a large federal spending package the House hopes to pass this week.

2017-2018 executivecommittee

2017-2018 EXECUTIVE COMMITTEE



President
Jeremy Preston, RPL
EQT Production
jpreston@eqt.com



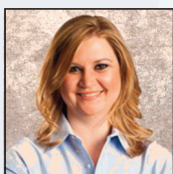
Director
Robert Greiner, RPL
Percheron
robert.greiner@percheronllc.com



Vice President
Britney Crookshanks, RPL
Infinity Natural Resources
bcrookshanks@infinitynr.com



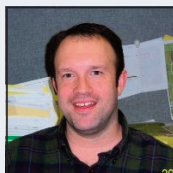
Director
Justin Nixon
EQT
jrnixon@eqt.com



Secretary
Christa Dotson
EQT Production
cdotson@eqt.com



Director
Lhag Bowers
Percheron
Lhag.bowers@percheronllc.com



Treasurer
Jeremy White, RPL
EQT
jwhite@eqt.com



National Director
Aaron R. Yost, CPL
Percheron Energy
aaron.yost@percheronllc.com



Seargent-At-Arms
Anthony Romeo
Arsenal Resources
aromeo@arsenalresources.com



President Emeritus
John Kimbleton, CPL
Dominion Energy
jkimbleton@gmail.com



Executive Director
Tara White
MLBC
twhite@mlbc-aapl.org

director's report

AAPL Director's Report

On September 10, 2017 I attended the AAPL Quarterly Board of Directors Meeting at Nemaquin Woodlands in Farmington, PA. Because perhaps this meeting was in MLBC's backyard, I received several inquiries, from several others whom I presume to be new to the board, about our association. Questions like, "so what is a MLBC," or "what is a Benedum?" Rest assured they received a history lesson they probably weren't expecting.

Following is my summary of the board meeting.

AAPL Headquarters

AAPL currently has an open position posted for Manager of Education and Member Services. The position is in Fort Worth, TX and the candidate should have a background in land. Contact AAPL if interested.

Treasurer's Report (period ending June 30, 2017)

Statement of Financial Position

As compared to June 30, 2016, total assets have increased from \$30,862,974 to \$33,442,931; a change of \$2,579,957 or 8.4%. This is primarily due to market activity related to the investment account. Total liabilities as compared to June 30, 2016 have increased from \$2,269,532 to \$2,528,729; a change of \$259,197 or 11.4%. This is primarily due to deferred revenue related to membership dues. Due to an

increase in the membership dues prices, members opted to pay dues for three years versus one year dues for a discount in their per year membership cost. There are temporarily restricted funds in the amount of \$11,700. The development of a JOA seminar accounts for \$10,000 and the balance is related to unused funds related to meeting speakers.

Statement of Activities

Revenues (exclusive of investment revenue) compared to June 30, 2016 have decreased from \$7,089,907 to \$6,055,961, a change of 14.6%. The decrease in revenue is due to a reduction in NAPE distributions and management fees, a reduction in educational seminar fees and a reduction in member dues. NAPE distributions and management fees decreased from \$4,016,968 to \$3,020,426 or 24.8%, which resulted from lower attendance at Summer NAPE and NAPE Denver. Educational seminar fees decreased \$210,996, or 27.4% due to a decline in attendance. Member dues decreased \$195,185 from \$1,741,432 to \$1,546,247, or 11.2%. Annual Meeting revenue, as well as contributions and rental income increased approximately \$300,000.

Expenses have decreased 23.2% from \$8,962,270 to \$6,882,142 as a result of measures to reduce food and beverage, speaker expenses and fees, and virtual attendance for education seminars. Publication costs for ceasing the Landman 2 reduced costs by 50.9% from

\$721,605 to \$354,198. General and administrative expenses were reduced by 31.2% from \$2,177,959 to \$1,497,372. Annual meeting expenses were reduced 26.3% from \$728,319 to \$537,180, and a reduction in salaries, contract labor and benefits resulted in a decrease of 7.6% from \$3,914,899 to \$3,617,778.

Investments as of June 30, 2017 are \$24,549,421, an increase of \$450,683 or 1.9% as compared to the same period last year. The change has been the result of unrealized and realized gains in the AAPL investment account in the amount of \$2,822,779 and transfers of cash to the AAPL operating account since June 30, 2016.

Membership

Total membership stands at 14,017 with 12,203 being Active. Over 85% of Active members have renewed their memberships.

Results of the membership survey can be found on the AAPL website and AAPL is working on improvements based on suggestions made by members.

Certifications

Stats for members with AAPL Certification Designation:

| | |
|-------------|-------|
| CPL | 2,831 |
| CPL/ESA | 49 |
| RPL | 2,078 |
| RL | 340 |
| Retired CPL | 50 |
| Total | 5,348 |

Certification applicants who

director's report

need to retake all or portions of the RPL/CPL tests will no longer be able to self-nominate a proctor to administer the test. Rather, AAPL will be working with MLBC on "approved" proctors. More on this topic soon.

NAPE

Summer NAPE 2017 unveiled several new programs this year, including "Hot Play Happy Hour Socials", "Table Talk" as part of the Business Conference where networking could occur based on geologic specific areas, ATV sweepstakes, and a pocket-size show guide. Sponsorship revenue increased by 23% over 2016. Attendance was up at NAPE as well as the Business Conference. Exhibiting companies also increased.

2018 NAPE Summit in February will be celebrating its' 25th anniversary. New features planned are a NAPE nostalgia wall, a Job Fair, a pickup truck giveaway and an AAPL Comparative Oil & Gas Law Review Workshop. Tom Brokaw will keynote the NAPE Charities Luncheon. YTD sponsorship revenue has already surpassed the total sponsorship revenue from 2017 NAPE Summit by \$267K.

Publications

AAPL has uploaded the past ten (10) years of the Landman magazine to the website.

AAPL Educational Foundation, Inc.

The Foundation recently approved a \$25,000 grant to the Education Committee to update the Field Landman Seminars. The Foundation is also fundraising to continue providing grants for educational programs. If anyone is interested in learning more, please let me know.

AAPL Mentor Program

This is a new committee which will link experienced land professionals with members that are new to the profession or to those who desire to enhance their skills in new areas of focus. Goal is to have the program developed by the end of 2017.

Field Landman Committee

The committee plans to hold 11-12 Field Landman Seminars this fiscal year.

GeoCare Insurance

For those who have a GeoCare policy through AAPL, you may be aware that Liberty Mutual cancelled their policies for GeoCare for auto and home insurance in 2016. Members who already held policies with Liberty Mutual will be able to keep those policies. The GeoCare Committee approved a proposal from MetLife to offer Auto and Homeowner's policies to our members in the future.

AGIA, the broker for GeoCare Insurance is investigating new companies for a private health insurance exchange for our members. They will have a decision as soon as possible in

order to have it in place for Open Enrollment in the fall. Health Insurance Open Enrollment this year is from November 1 through December 15, 2017.

Disaster Relief Fund

In the wake of Hurricane Harvey and on the day Hurricane Irma was making landfall, the Executive Committee and Board of Directors voted in favor of raising a disaster relief fund to assist our members who were not only impacted by the hurricanes, but for future disaster situations. The fund will be managed through the AAPL Educational Foundation. AAPL will seed the fund with \$500,000 and will match up to another \$500,000 for any donations received. The AAPL Educational Foundation will match up to \$250,000 for any donations received. More details to come soon.

The next quarterly board meeting will be held December 3, 2017 in San Antonio, TX. If anyone has questions regarding the national association, or any concerns, suggestions, or comments you feel should be shared with the AAPL Executive Committee and Board of Directors, please contact me at aaron.yost@percheronllc.com. It's a privilege to serve MLBC as representative to AAPL and thank you for your support.

*Aaron Yost, CPL
National Director*

Energy Land Management at WVU

Energy Land Management (ELM) at West Virginia University is one of 12 AAPL accredited programs specifically designed for energy land professionals. ELM's first semester as an accredited major was in the spring of 2014. It has grown from 19 students in the inaugural class to 135 students currently. The student association, Energy Land Management Association (ELMA), has over 60 active members, this fantastic participation rate is the highest of all majors in the School of Natural Resources at WVU. Not to mention, the job placement rate of ELM students is currently at an outstanding 100%.

ELM came to WVU out of necessity for a land program in the east. Former MLBC president and current Public Affairs Representative at Steptoe & Johnson Steve Perdue, CPL felt the need and in 2012, he initiated the process by meeting with a WVU representative to discuss the idea. From there, the ball started rolling rather quickly with the WVU Board of Governors approving the program in fall 2013 and a semester later beginning ELM classes for the first time.

Mr. Purdue felt WVU was a natural fit for a land management program for several reasons, including his status as an alumnus. WVU also already had several existing programs that ELM could draw from such as petroleum engineering, law, business, geology, and forestry. This meant the number of new classes that were needed was relatively small. The geographic location of the university also played a role as it is conveniently placed in a central location in the Marcellus and



ELMA delegation at NAPE in Houston

Utica shale plays. Since the inception of WVU's program, similar programs have followed at Penn State and Marietta College.

The program also would not have been possible had it not been for the massive support it has received from the industry, especially to those on the Energy Land Management Advisory Board. Those partners include Steptoe & Johnson, LLP, Southwestern Energy Company, Cabot Oil and Gas Corp., Ally Land & Energy, Dominion Resources, Enervest, Noble Energy Inc., Range Resources, Antero Resources, and DPS Land Services. Members include MLBC, IOGAWV,

NALA, WVONGA, and XTO Energy. The generous donations made by these leaders in the industry created the foundation for this program, have provided and continue to provide positions for the internship program, and some have even served as adjunct professors. This support has been vital to the success of the program and we are humbled and grateful for the dedication the industry has shown for this program.

In conjunction with the exponential growth of the program the student association has grown into a vital piece of the program, teaching students about networking, event planning, business skills and more. ELMA has sent students to NAPE in Houston every year since 2014 and ELMA members have attended numerous other AAPL events and MLBC events. Since 2014, more than 10 students have received the AAPL scholarship as well as three students receiving scholarships from the MLBC.

ELMA has also participated in several volunteer activities in the past three years. These activities include trail cleanup at Cooper's Rock State Park, Noble Energy sponsored stream cleanup and trout stocking in Marshall County WV, WV flood victim donation and building sheds on-site, and most recently, trail building in the Falling Run trail system in Morgantown.



ELMA volunteer trail cleanup

Energy land management at WVU is a story of the industry coming together and making greatness happen, where often companies are seen as competitors they have joined forces to create a program that is developing the next generation of great land professionals. ELM is the first new major to be created at WVU in over 50 years, on top of that the ability to create a program in under a year is virtually unprecedented. This tremendous support has been incredible and we will continue to strive to produce highly qualified land professionals for the industry.

ELMA COMMITTEE
Reid Croft, Hunter Coker, Conner Boyd, Jared Foreman



ELMA trail building at Falling Run

MLBC holds September Dinner at Marietta College

The MLBC September dinner meeting was held at Marietta College on Thursday, September 14, 2017 at Andrews Hall, one of the oldest buildings on campus. The meeting was well attended and the MLBC was also graced with the presence of students who are enrolled in the Land and Energy Management program at Marietta College. Those that attended the meeting were able to interact with those students, learn about their program and even had the opportunity to take a walking tour of the campus given by the students. (Side Note: For those of you who have not been to Marietta College, you owe it to yourself to stop by and take a look... a truly beautiful campus!) Those that attended the walking tour will probably be making a trip back to visit the Special Collections located in the Legacy Library. One of the tour guides, Ross Keller who works as a library assistant, told the group that documents from the founding of the Northwest Territory can be found in the Special Collections area. This piqued many of our collective interest along with many questions that followed as to what oil and gas documents could be found.

Dr. Mark Miller, Associate Provost at Marietta College, welcomed those in attendance and revealed his love for the industry as his father was a landman and also formed a drilling company in the 1980s. He was followed by a presentation given by Morgan Griffith, Senior Counsel at Columbia Pipeline Group. Marietta College students are known as the Pioneers and those in attendance discovered exactly why they chose that name after hearing Ms. Griffith's presentation on Oil and Gas in Ohio. Marietta was a pioneer in the Ohio Valley in land exploration, education and oil and gas

development. Oil was first discovered in 1814 while drilling for salt with the first oil well in Ohio being drilled in 1860. From 1860 to the early 19th century, Marietta played a pivotal role in the oil industry nationwide culminating in 1896 when Ohio led the nation in oil production. As any landman who has used the ODNR well map or performed a title search in Washington County, OH can attest; natural gas well production has played an integral role in the area as well. While natural gas was first viewed as a nuisance by product of oil drilling, its uses expanded and from 1887 to 2013, 80,000 wells were drilled into the Clinton Sandstone formation which lies under Marietta and the surrounding area.

After the dinner, our speaker was Stephen J Bupp, Esq. who is a Landman III at EQT Midstream. Most of us have witnessed many pipelines that are crisscrossing the areas we work in on a daily basis and Mr. Bupp's presentation provided a snapshot into the planning behind those pipelines. His PowerPoint slides were very informative and walked those in attendance on a step by step process of how the route for a pipeline is laid out and what other considerations are used in building a pipeline. Whether you work in the Marcellus or Utica Shale or another formation, we, as landmen, are witnessing the progression of oil and gas development in the region and it was a real pleasure to learn more about how pipelines are fully planned and built.

Overall, those in attendance were treated to a very enjoyable evening on the campus of Marietta College. A huge thank you to the staff and students in the Land and Energy Management program for hosting the MLBC and to our dinner meeting sponsors for a successful event.



Dr. Mark Miller, Associate Provost at Marietta College



Jeremy Preston, MLBC President and Ross Keller, Land and Energy Management Student

MLBC Fall Golf Outing

MLBC Donates \$27,500 to Big Brother Big Sisters

On August 7, 2017, the MLBC held its annual Fall Golf outing at Valleybrook Golf Course in McMurray, PA. The event was a great success and raised over \$27,500 for the Big Brothers Big Sisters of Greater Pittsburgh.

A special thank you to Fall Golf Committee Chairs, Lee Hebert and Michael Yates, and Daniel Cooper for helping organize and creating such a successful event. Their contributions

of time and effort helped the MLBC host an amazing event for a great cause. The MLBC is an organization that provides opportunities for community service of its members and this event offered that opportunity while supporting an amazing charity.

The MLBC would also like to thank the sponsors of the event, the participating golfers and Valleybrook Golf Course for assisting in the success

of the event. Sponsors for the event were Civil & Environmental Consultants Inc., American Petroleum Partners, Percheron, Arsenal Resources, Sean Cassidy & Associates PC, Southwestern Energy, BOP Land Services, Dudley Land Company, Tug Hill Resources, Campbell Development LLC, Markwest Energy Partners, and Vorys Sater Seymour and Pease LP.



From left to right: [Steve Carr, Blaise Jenkins, Tom Baker, Michael Yates, Danny Cooper, Lee Hebert] Daniel Cooper and members of the MLBC present the charitable donation of \$27,500 to Big Brother Big Sisters of Greater Pittsburgh.

memberspotlight



It is with great pleasure we introduce you to Ms. Morgan Rich. Morgan is a Student-Member of the MLBC and she has been actively involved in our organization since November 2015. Since that time, Morgan has assisted the MLBC at meetings with registration and photography at luncheons and dinner meetings.

Prior to joining the MLBC, Morgan obtained an Associates of Science degree from Zane State College in 2015. She currently is a student in Marietta College's Land and Energy Management program. Morgan was

also a recipient of the 2016 Michael Late Benedum Chapter Student Scholarship Awards for her outstanding academic achievement. Morgan currently serves as President of the Marietta College Landman Association.

Morgan is from Mt. Ephraim, Ohio where she grew up with her family and where she attends Mt. Ephraim United Methodist Church. She is happy to announce that she will soon earn another title; she will become an Aunt in October. Earlier in 2017, Morgan was hired as a Land Tech for Artex Oil, of Marietta, Ohio. She says she is "getting really good at paying out lease-bonus rentals" and often handles the recordings for Artex.

When asked about the community service and member involvement of the MLBC, Morgan has shared that "the charity golf outings and clay shoots that the MLBC host are awesome. After being involved in multiple golf outings it is great to see MLBC members support the community."

Morgan hopes to soon earn her RL and eventually earn her CPL. When

asked of her areas of interest Morgan said "I like seeing every project clear through, from leasing and drilling to completion. Landowners also interest me. I am looking forward to fixing issues that landowners may have with their oil and gas industry experience. I enjoy making people happy!" After graduating from Marietta College in 2018, Morgan aspires to one day obtain a management role in a large land department.

When asked if she has a mentor in the industry, Morgan said that during her short membership in the MLBC she has met a great deal of professionals and she looks up to several of them. In regard to the Marietta College program, Morgan says Professor Tina Thomas and Professor Greg Delemeester have started an amazing program and Tina has encouraged and helped all of us students to attend networking events."

Remember to say Hi to Morgan at our next event!

John T. Catsonis
Marketing Committee

newmembers

| First Name | Last Name | Employer | Member Type | Sponsoring Member |
|------------|-----------|---------------------------------|-------------|--------------------|
| John | Howard | alliance petroleum corporation | Active | Dailey, Richard W. |
| Jordan | Kurth | Babst Calland | Associate | Zoeller, Jason |
| Max | Wheeler | Cardinal Land Services | Active | Bryant, Kellie |
| Dylan | Skidmore | Hughes River Land Services, LLC | Associate | Farr, Anthony |
| Zach | Boston | Independent | Active | Lowers, Tyler |
| Douglas | Hatfield | Precision Oil and Gas | Associate | Preston, Jeremy D. |
| Amy | Mullen | Top Notch Land Service, Inc | Active | Farr, Anthony |
| William | Mullen | Top Notch Land Service, Inc. | Active | Farr, Anthony |

Pending Members - September 2017:

committee chairs

2017-2018 COMMITTEE CHAIRS

| | | |
|--------------------|--------------------------------|---|
| AWARDS | CHRISTA DOTSON | <i>EDOTSON@EQT.COM</i> |
| CERTIFICATION | JAMES TALKINGTON, JR., CPL/ESA | <i>JETA@FRONTIER.COM</i> |
| EDUCATION | MORGAN GRIFFITH | <i>MORGAN_GRIFFITH@TRANSCANADA.COM</i> |
| EETHICS | JUSTIN NIXON | <i>JRNIXON@EQT.COM</i> |
| FALL GOLF | LEE HEBERT | <i>LEE.HEBERT@GMAIL.COM</i> |
| FINANCE | ADAM MORGAN | <i>ADAM.MORGAN@CABOTOG.COM</i> |
| HISTORIAN | DAVID AMAN | <i>DAVIDAMAN@CONSOLEENERGY.COM</i> |
| LEGISLATIVE | STEVE PERDUE | <i>STEVE.PERDUE@STEPTOE-JOHNSON.COM</i> |
| MARKETING | JOHN CATSONIS | <i>JCATSONIS@APEXLANDCORP.ORG</i> |
| MEETING PLANNER | CHRIS HELMICK | <i>CHELMICK@EQT.COM</i> |
| MEMBERSHIP | TOM CACCHIONE | <i>TOMCACCHIONE@GMAIL.COM</i> |
| MENTORSHIP | JUSTIN NIXON J | <i>RNIXON@EQT.COM</i> |
| DIRECTORY | OPEN | |
| PHOTOGRAPHY | MIKE KALANY, RPL | <i>MKALANY@EQT.COM</i> |
| SPRING GOLF | JEFFREY JUNSTROM | <i>JJUNSTROM@CASSIDYPC.COM</i> |
| SCHOLARSHIP | KEVIN PIERSON | <i>KP@BKLPLAND.COM</i> |
| SPONSORSHIPS | LHAG BOWERS | <i>LHAG.BOWERS@PERCHERONLLC.COM</i> |
| WEBSITE/JOB BANK | JEREMY D. PRESTON, RPL | <i>JPRESTON@EQT.COM</i> |
| UNIVERSITY LIAISON | MARK ACREE, CPL | <i>MACREE1959@YAHOO.COM</i> |

Thank You!

The Executive Committee of the MLBC would like to extend our sincere thanks to our Executive Director, Tara White. Over the years, we have been quite fortunate to have Tara with us. She has served the MLBC in ways that are too numerous to count. Her dedication and steady guidance have helped to grow our organization and enhance the benefits that we are able to bestow upon our membership. Thus, it is with immeasurable gratitude that we say thank you for your hard work and dedication.

*Best of luck in your future endeavors, Tara.
We will miss you!*



membershipinformation



Michael Late Benedum
"The Great Wildcatter"

The MLBC membership application is located on the website at www.mlbc-aapl.org. Please check your information on the website prior to submitting your renewal. The MLBC website has an updated version of the membership listing. Please use this resource if you can not find yours or others information in the directory. Please report any errors or omissions to Tara White at twhite@mlbc-aapl.org.

Notice of the application(s) of all potential Chapter members shall be published in the next regularly scheduled monthly Chapter "Takeoff" newsletter. Active members shall have the opportunity during a period of thirty (30) days following the first publication to object to the potential members' application.

Such objections to membership approval may be submitted to any member of the Executive Committee and shall be in writing. The Executive Committee shall take any such objection under counsel in the next regularly scheduled monthly Executive Committee meeting. A decision to accept or reject the membership application shall be determined by a majority vote at such meeting. The Executive Committee shall notify the applicant in writing of rejection. Application for membership in the Chapter shall be subject to the approval by a majority vote of the Executive Committee at a regularly scheduled meeting, after the aforementioned thirty (30) day newsletter publication period, and shall require the signed approval by the acting President of the Executive Committee, as evidence of the Committee's approval. Names of any and all newly approved members shall be read at the following regularly scheduled general meeting of the Chapter.

MLBC WEBSITE

If you experience any problems using the website or if you have any suggestions, please contact Jeremy Preston via e-mail at JPreston@eqt.com.

JOB BANK

The direct link for MLBC Job Bank is www.mlbcjobbank.com. If you have any questions, please contact Jeremy Preston via e-mail at JPreston@eqt.com.

PHOTO ALBUM

We would like to share our Photo Album with you to show you what MLBC has been doing throughout the year. The direct link for MLBC Photo Album is www.mlbc-aapl.org/VPhoto.php.