



# Michael Late Benedum Chapter

American Association of Professional Landmen

## The Take-Off

April 2015

MLBC  
P.O. Box 955  
Bridgeport, WV 26330

### THE CRY FOR ENERGY EDUCATION

Representing the oil and gas industry is one of the most unpopular stands that a person could make in today's society. To say, "the natural gas industry is revolutionizing America and bringing hope to end our nation's dependence on foreign oil," is something that many people do not want to hear or accept as reality. This leads us, as land professionals, to ask what are we really representing here? Did we sell our souls to the big oil and gas companies for the sake of a decent salary? If no, then what is our argument? The difficulty in mastering a response to the critics is the lack of energy education within our own industry and the bitter conflict between industry and the opposition.

First of all, we love Earth just as much as the next person. We too, strive to leave a better world for future generations than the one that we are currently living in. According to the experts though, continuing on the route we are on will deplete all of our natural resources and cause catastrophic results to the economy and the environment. You may remember similar dramatic warnings from a televised presidential address in 1977 where President Carter warned "We could use up all of the proven reserves of oil in the entire world by the end of the next decade." We obviously now see that these reports were false, in fact, our current reserves are double that of the 1970's and current production indicates supply for many years to come. Without the development of fossil fuels, how would society have advanced and made the technological progress as seen in the past four decades? I personally do not argue the fact that we are making an impact on the environment and the future of our planet. We must develop natural gas in a responsible, environmentally mindful way for the sake of our communities and the future of the planet. Energy education is a vital part of our industry and the impact we make on the community. We must be committed to providing adequate education and materials to the land professionals in our region.

Through this commitment, we will continue to make a positive impact on our region, our industry, and our nation. The MLBC strives to provide these opportunities by providing educational events, ethical standards, partnerships with our community, and most recently, an effort to restore the history of the industry and the impact it has made on our region. This is why we have planned "Where It

#### INSIDE THIS ISSUE

MLBC Job Board .....	2
Director's Report .....	3
Oil & Gas Museum Flyer .....	6
Silent Auction .....	7
Event Entertainment .....	8
Education Committee .....	10
MLBC Charity Golf Event ....	11
New Members .....	12
AAPL Education Events .....	14
Sponsorship Opportunities .	15
Corporate Sponsors .....	16
Executive Committee .....	17
Committee Chairs .....	18
Schedule of Events .....	18
Dinner Meeting Photos .....	19
Dinner Meeting Photos .....	23
Membership Information ....	24

#### Upcoming events

##### [Click Here to Register](#)

"Where it All Began" Gala  
April 23, 2015  
Parkersburg Art Center  
Parkersburg, WV

##### [Click Here to Register](#)

Annual Spring Charity Golf Event  
May 8, 2015  
Oglebay Resort  
Wheeling, WV

All Began,” A Gala for the Oil and Gas Museum in Parkersburg. The fundraising event will be held April 23rd, 2015 at the Parkersburg Art Center. Social hour will begin at 5pm, dinner at 6pm, and live entertainment will follow directly after. All money raised for this event will be donated to Parkersburg Oil and Gas Museum to ensure the preservation of history of the natural gas industry in the Appalachian basin. We look forward to seeing many industry friends at the Gala and are grateful for the opportunity to work with our membership as we make a positive impact in our region.

Anthony D. Farr, RPL

MLBC President 2014-2015

## MLBC Launches New Job Board

The Website Committee is proud to announce the launch of the MLBC’s new Job Board. The new job board offers candidates more opportunity to get noticed and adds flexibility for employers to promote their job postings and search for candidates who are actively seeking work. The Job Board can be accessed by clicking [Here](#). Some of the highlights:

**For Job Seekers:** We’ve expanded the capabilities of the user profile to include more detail and enhanced privacy settings. Users can now exclude specific employers from seeing their profile or choose to make it completely private. Job postings are now searchable by distance and skill category with results sortable by location, employer and job type.

**For Employers:** Searchability is the name of the game. Candidate profiles are now searchable by specific skill categories with results sortable by industry experience. Employers now have their own accounts and company profile including logo and contact info that is displayed on all job postings. Job postings can also include a direct link to an internal career site to complete the application process.

**Design:** The MLBC’s new Job Board is housed internally within the organization’s member management system and reflects the feel of the new website, creating a seamless experience for users.

This latest redesign is part of the MLBC's continuing effort to better serve our membership through technology. We hope the new job board becomes a valuable tool for our membership and appreciate any feedback to help achieve that end. If you experience any problems or have any suggestions, please contact Jeremy Preston via e-mail at [jpreston@eqt.com](mailto:jpreston@eqt.com).

Jeremy D. Preston

Website Chair & Treasurer

# MLBC Directors Report



On March 14-15, 2015, on behalf of the MLBC, I attended the AAPL quarterly Board of Directors meeting at the Francis Marion Hotel in Charleston SC. During the meeting, a number of topics were introduced that would be of interest to our local association members.

AAPL is closely following the down cycle trend in the oil and gas industry and will be working over the next quarter to align its 2015 budget, including forecasts for the remainder of the year, to accommodate the changing environment of its members and their companies. Steps are being taken to eliminate unnecessary spending and look for methods to reduce overhead by 20%, which would generally match or be more aligned with industry cost reductions.

The Certification Committee presented a motion which was passed to allow item #3 (or C) in the list of eligible requirements for what constitutes “Landwork” to be counted towards credit for the RPL and CPL as “Landman” work. This section now includes “determining ownership in minerals through research in public and private records”. This is not just making copies in the courthouse or compiling records for an abstract, but the actual interpretation of the records and setting forth the ownership of title to a property. This was a long debated topic within AAPL and its membership, but the board of directors did pass this change which is effective immediately. An article will be coming out soon on this change in the Landline and the Landman magazine. Many who were not qualified due to not being able to fulfill the requirements of #1 and #2 (or A & B) of the definition of Landman work, will now qualify with this addition. Also, in my last report, please remember the change to the RPL certification which was amended effective September 8<sup>th</sup>, 2014 to change the requirements for sponsorship to either 2 CPLs or 1 CPL and 1 RPL. This will certainly help the members who are having difficulty finding 3 CPLs as sponsors. No change was made for the CPL certification which still requires 3 CPLs as sponsors. Additional topics are still under consideration by the committee including the status of Surface Only Landmen in relation to their eligibility to become RPL or CPL certified.

AAPL completed a reorganization of staffing and internal reporting to assist with streamlining departments and altering the number of direct reports the EVP has on a daily basis. With that re-org, Christopher Halaszynski was promoted to Director of Education and Member Services and Le’Ann Callihan was promoted to Director of Public Relations and NAPE. Both have been loyal and hard-working members of the AAPL staff and certainly deserve these promotions. Congratulations to both.

AAPL headquarter renovations are complete and due to the generosity of Steve Mueller and Jim Dewbre of Southwestern Energy, many of the AAPL offices contain furniture donated by SWN during their move to the new SWN offices. An open house is being planned for late April or early May.

The AAPL will host the 2015 annual meeting in Nashville, TN. MLBC member Arnie Schulberg is the Chairman of the Annual Meeting Committee. Keynote speaker is James Baker, III, former White House Chief of Staff for Presidents Reagan and Bush. Sponsors are still being sought for this event. Registration is open, so please proceed with getting your registration in, which will allow you to obtain housing (hotel) room reservations. Important events at the annual meeting include the Landman Bash at the Wild Horse Saloon and the President’s Ball with a theme of Putting on the Ritz. With this event being regionally located closer to our members, it would be great to have a good

# MLBC Directors Report Continued

showing of MLBC, NALA and Appalachian association members.

AAPL has announced the 2014 award recipients which includes the MLBC for Largest Growth Percentage of AAPL Membership in the Large Association category. Congratulations to our board and the membership in obtaining this milestone. Thanks also to Bruce Turner for heading up the MLBC awards nominations and submitting numerous award nominations.

As of the March board meeting, the membership total for AAPL is 19,674. This number is up from 18,916 as of the December board meeting. AAPL continues to reach out to the inactive members that did not renew. Membership is expected to continue to grow in 2015, with the overall count back over 20,000, assuming the industry down turn does not adversely affect our membership.

NAPE Summit (new name for Winter NAPE) was held in Houston on February 12-13, 2015. Marty Schardt, AAPL EVP, reported attendance was down 10-11% from last year, but enthusiasm was good with more prospects being marketed. Approximately 15,000 people attended NAPE Summit. NAPE Decisions Makers Breakfast was moderated by Carl Campbell and former Alaska Governor Sarah Palin. Over 500 people attended. The NAPE Charity Luncheon was moderated by Jeanine Piskurich with a big assist from former First Lady Laura Bush, who wowed the audience with her charm and humor. An audience of approximately 1,600 was present. \$400,000 was collectively awarded to four charities at this event (\$100,000 each). NAPE Pittsburgh has been a topic for the NAPE Operators committee and AAPL. While it was cancelled due to concerns over lower attendance and exhibitor participation, many felt a reduced size program and exhibitor space could have been provided. The committee will be reviewing this for next year. Cancellation of NAPE Pittsburgh did cost NAPE and AAPL some money due to cancellation fees and hotel guarantees that had been negotiated. Measures are underway to reduce the effects of these losses if hotels can sell the reserved space to other vendors. The next NAPE will be this August as Summer NAPE takes place, followed by NAPE Denver in early December.

A new joint institute was held with the Society of Petroleum Engineers (SPE) in San Antonio in March. This was held to provide both groups (AAPL and SPE) with education that will create more well-rounded professionals on both sides. AAPL is currently working to deliver the next Landman 411 series, the Basics of Petroleum Economics, and the Distinguished Speaker/Thought Leadership series. Check out the AAPL website and watch your e-mail for AAPL Landline and other announcements by AAPL for educational opportunities. In particular, look for opportunities to utilize the new Ethics program established by AAPL, Ethics 360. This is offered in an abridged version and full seminar format. You can see the abridged version on the AAPL website. If your company would like the abridged or full version of this program to be presented in your offices, please contact AAPL. It is hoped that every member company of AAPL will use this video production to train their Landmen.

The AAPL Field Landman Committee will hold a Field Landman Seminar in Wheeling WV at the Wheeling Island Hotel and Casino on May 7<sup>th</sup>.

AAPL Tax Issues committee, working in conjunction with the local associations, has produced the Independent Contractor Online Toolkit. This information is to be loaded on the AAPL website. Also, in conjunction with AAPL's Legislative team, AAPL has scheduled Landman Lobby Day at the State Capitol of Pennsylvania (Harrisburg) on



# MLBC Directors Report Continued

April 13<sup>th</sup>. This event is being partnered by the MLBC and NALA. Watch your e-mail for blasts from AAPL and MLBC on this subject. This primarily affects those that work as independent contractors. Also, the form Master Services Contract has been loaded on the AAPL website for use by the members.

AAPL continues to expand its presence among various social media sites. Twitter, Facebook and LinkedIn are the most popular. Remember to check out the APPL Toolkit found on the AAPL Website at [www.landman.org](http://www.landman.org). These tools include numerous resources for all Landman to use in their daily work. The NAPE and AAPL websites continue to expand and non-member traffic is increasing. Online public awareness campaigns and new media relations projects are expanding. Please make use of these programs.

AAPL reports a strong balance sheet with December 31, 2014 assets of \$34,134,843, an increase of 2.34% over the same period in 2013. At December 31, 2014, revenues decreased .97% from \$3.217 million to \$3.186 million, and expenses decreased 8.64% from \$3.657 million to \$3.341 million over the same period in 2013. Decreased revenues is the result of lower revenues from NAPE, and the decrease in expenses is primarily due to a lower expense from advertising that was incurred from a campaign in 2013. In addition, investments from the Martin Luther accounts, currently \$27.8 million, reflect a decrease of 14%, which is primarily due to the transfer of funds from AAPL to the LST account and taxes issues from realized and unrealized gains.

The AAPL Education Foundation balance is \$3.83 million and the AAPL Landman Scholarship Trust balance is \$6.2 million. These funds exist primarily from profits attributable to NAPE, and the foresight of the Board of Directors to continue to fund these programs so each can continue to fund important programs.

The MLBC and our region is well represented on the AAPL board and committees by local members. The interests and needs of our Appalachian Landmen are being addressed along with the rest of the country.

The next meeting of the AAPL board is scheduled for June 16-17, 2015 in Nashville TN in conjunction with the Annual Meeting. Should you have any concerns or questions, I should address to the AAPL Executive Committee or Board of Directors, or bring to the attention of the MLBC Executive Committee, please feel free to contact me at [macree1959@yahoo.com](mailto:macree1959@yahoo.com). I am very happy to serve as MLBC's representative to AAPL and thank the Executive Committee, MLBC Board and the membership for their support.

Mark Acree  
Regional Director

*Join us for "Where It All Began"  
a Gala for the Benefit of the  
Oil & Gas Museum in Parkersburg, West Virginia*



*Thursday, April 23, 2015*

<i>5:00 PM</i>	<i>Cocktail Reception &amp; Silent Auction</i>
<i>6:00 PM</i>	<i>Plated Dinner &amp; Oil &amp; Gas Museum Presentation</i>
<i>7:30 PM</i>	<i>Live Entertainment</i>

*Venue*

*Parkersburg Art Center*

*725 Market Street*

*Parkersburg, West Virginia*

<http://parkersburgartcenter.org/>

*Registration Fee - Members and Non Members \$75*

**Parking:** The Art Center is located in downtown Parkersburg and there are several options available for parking. Generally, parking is available along Market Street and surrounding streets for a nominal meter fee and free after 5:00 P.M. Additionally, there is a parking garage a short walk away at 520 Juliana Street, Parkersburg, WV. Finally, there is parking available directly across the street from the Art Center in the Red Cross parking lot (corner of Market Street and Eighth Street) after 5:00 P.M. only.

**Accommodations:** A block of rooms has been reserved at the historic Blennerhassett Hotel. Room prices range from \$101-\$238/night. The hotel is located at 320 Market Street, Parkersburg, WV. <http://theblennerhassett.com/>. Tel. 304.422.3131 or 800.262.2536. For discounted rates, please mention MLBC when booking your room.

*Oil & Gas Museum Tours*

Museum tours will be available from 11:00 A.M. until 5:00 P.M. on the day of the event. The Oil & Gas Museum is located at 119 Third Street, Parkersburg, WV. <http://oilandgasmuseum.com/>. Tel. 304.485.5446.





**Michael Late Benedum Chapter**

American Association of Professional Landmen

# Silent Auction Basket Contest

Choose a  
theme  
that will  
“wow”  
the  
guests

Fill your  
basket  
with  
amazing  
items!



*The MLBC is issuing a challenge to all companies, brokers and land service providers! We challenge you to create the best themed gift basket in the land! The individual or company donating the basket which raises the most cash for the Oil & Gas Museum will be declared the winner and receive special recognition at the Gala!*

*Will your basket receive the highest bid?*



## ***Gala Benefiting the Oil & Gas Museum***

April 23, 2015

5:00 pm

Parkersburg Art Center

725 Market Street

Parkersburg, West Virginia

<http://parkersburgartcenter.org/>

Please contact Tara White at [twhite@mlbc-aapl.org](mailto:twhite@mlbc-aapl.org) to register for participation in the basket contest.

# Live Entertainment? What Kind of Entertainment?

That is a valid question. So I'll answer it for you!

When you attend the gala on April 23<sup>rd</sup>, in addition to supporting the WV Oil & Gas Museum, you will be in for a musical treat. Those who attended the MLBC's 55<sup>th</sup> Anniversary party last April were rewarded with an excellent performance by Patrick Sweany, which received positive feedback from all directions. That being said, I can assure you just as much effort has gone into securing the performer for this fundraiser.

One of the comments I received after the Sweany show was that it was a bit loud – which was true I suppose. This upcoming event, being more of a gala, lends itself to something a bit more...well, less loud. But, I didn't think background piano music would do the trick.

Enter Justin Trawick and The Common Good!



Justin Trawick has been performing in the Washington DC Area and the East Coast since since 2006 both solo and with his band – The Common Good. I believe you will find that these guys are the perfect choice and will be enjoyed by all. Their genre is classified as “Americana”, but they are so much more than that. Justin’s music stylings range all the way from folk/bluegrass to funk/hip-hop and everything in between! Consisting of acoustic guitar, upright bass, mandolin, and fiddle, Justin Trawick and The Common Good are often compared to David Gray, Tallest Man on Earth, G. Love and Special Sauce, and Old Crow Medicine Show.

Fronted by award winning songwriter Justin Trawick, the band has shared the stage with artists such as Blues Traveler, The Avett Brothers, The Gourds, Suzanne Vega, Brett Dennen, Bob Schneider, Pat Green, Ingram Hill, Edwin McCain, Pat McGee, Cowboy Mouth, Sara Bareilles, Jimmies Chicken Shack, K.C. and The Sunshine Band, Robinella, and....even the Ying Yang Twins!

Founder of “The 9 Songwriter Series” and co-founder of “The Circus Life Podcast”, Trawick has built a brand that extends beyond just being a musician local to DC. In February of 2014, Trawick won “Song of the Year” at the Washington Area Music Awards for his song “All the Places That I’ve Been”, which can be downloaded on iTunes. With five albums on iTunes, Pandora, and Spotify, Trawick and the band are seasoned professionals when it comes to putting on amazing foot stomping performances – and you need to be there on April 23<sup>rd</sup> to experience it!

For more information go to [justintrawick.com](http://justintrawick.com), [wearethe9.com](http://wearethe9.com), and [thecircuslife.com](http://thecircuslife.com).

Jeremy White  
Chair, Finance Committee



**JUST IN TRAWICK**

**AND THE**

**COMMON GOOD**



**APRIL 23, 2015**

**GALA TO BENEFIT THE OIL & GAS MUSEUM**

**PARKERSBURG ART CENTER**

**PARKERSBURG, WV**

*Casey Gill*



# Education Committee Update

The MLBC and the West Virginia Chapter of IRWA teamed up to offer a full day seminar at the Bridgeport Conference Center on February 12, 2015. Presentations were made for a broad range of topics including abstracting, surface issues, survey, GIS, petrochemical projects and much more. Approximately 115 attendees enjoyed the spending the day with us. Many thanks to WV Chapter IRWA President, Cheryl Davis (Steptoe & Johnson) and MLBC/IRWA Member, Bruce Turner (Steptoe & Johnson) for their assistance with planning this very successful seminar.

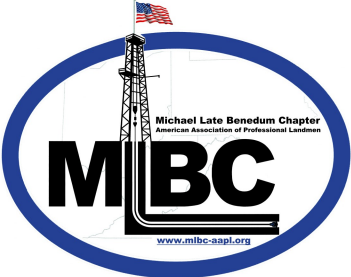
The MLBC and the West Virginia University Energy Land Management Program offered a full day course titled “Introduction to Spreadsheets, Cloud Computing and Energy Land Management” in Morgantown, WV on February 17, 2015. This course was taught by Shawn Gruschecky, Ph.D., the Coordinator for WVU’s Energy Land Management Program. The focus of instruction was a hands-on introduction to Excel basics including formatting, editing, formulas and functions. Advanced techniques applicable to flow charts, run sheets and divisions of interest were also covered. The course was a huge success with a capacity crowd. Planning is underway for additional MLBC/WVU Energy Land Management joint educational events including more Excel courses and a new GIS course. Additional information will be sent to MLBC members via email once the details are finalized. For more information on the AAPL accredited Energy Land Management Program at WVU, please see the program website <http://energy.davis.wvu.edu/elm>.

MLBC Vice President, Aaron Yost, CPL, was a guest lecturer for students in WVU’s Energy Land Management program on February 17, 2015. Additionally, MLBC Past President and current AAPL Regional Director, Mark Acree, CPL, was a guest lecturer for students in WVU’s Energy Land Management program on March 3, 2015. Aaron and Mark spoke to students about their experience in the oil and gas industry and the importance of AAPL and MLBC membership. Thank you to Aaron, Mark and all of the MLBC Members who have volunteered their time to speak to students this year.

The MLBC Education Committee has added several members to assist with planning our events for the upcoming year. New Committee members are: Mark Mudrick (Percheron Energy), Jeannie Morgan Johnson (Northeast Natural Energy), Tara White (Energy Corporation of America), Thomas Long (Independent) and Chris Helmick (EQT Production Company). Thank you to our new members! If you would like more information about joining the MLBC Education Committee, please send your inquiry to [cdotson@eqt.com](mailto:cdotson@eqt.com).

Christa Dotson  
Education Chair





# MLBC CHARITY GOLF EVENT

## SPONSORSHIP OPPORTUNITIES



2015 marks the 7<sup>th</sup> year for the Annual MLBC Spring Charity Golf Event benefiting West Virginia University Children's Hospital. This year's event will be held on Friday, May 8 at 11:30 am at Oglebay Resort in Wheeling, West Virginia on both the Palmer and Jones Courses. More than \$120,000 has been donated to WVU Children's Hospital over the past 6 years and we hope to make a significant donation again this year.

Please consider sponsoring this great event at one of the levels below, and remember that our donations to the hospital have provided comfort to many "micro-preemies", other children and their families during their stay at the hospital. Let's continue to support this great event!

Miracle Sponsor - \$3,000 (3 available)

*Includes: 4 golf/dinner registrations, 4 MLBC logo golf shirts, full page ad in program, **PRESENTING SPONSOR** signage during registration and dinner/awards. Website and newsletter recognition.*

Flag Sponsor - \$1,750 (4 available)

*Includes: Nine (9) cloth flags that are always standing out to reveal your company's logo. You'll receive all nine flags after the round, one of which will be framed. Program, website and newsletter recognition.*

Refreshment Sponsor - \$1,000 (8 available)

*Includes: Your company name or logo prominently displayed at a tee box as well as a refreshment station that includes a keg of beer, a server and a tub of water and soda. Program, website and newsletter recognition.*

Hole Sponsor - \$500

*Includes: Your company name or logo prominently displayed at a tee box. Program, website and newsletter recognition.*

*If any sponsor would like to provide logo golf balls, towels, ball repair tools, hats, etc we'd love to hand them out to all the golfers. Contact us and let us know how you'll get your company's name in each golfer's hand.*

Please make your check payable to "MLBC" and mail to:

Aaron Yost  
Percheron Energy, LLC  
320 South View Drive, Suite 400  
Bridgeport, WV 26330

Be sure to include a note indicating your sponsorship level and e-mail your company logo to Aaron Yost at [aaron.yost@percheronllc.com](mailto:aaron.yost@percheronllc.com)

Thank you for your continued support!

## New Members – March 2015

First Name	Last Name	Employer	Member Type
Christopher	Brown	Independent	Active
Shane	Miller	Independent	Active
Michelle	Tinsley	Independent	Associate
Bruce E	Carlson	Independent	Active
Jennifer	Cosner	Independent	Active
Gina	Pointer	Independent	Associate
Stefan	Keplinger	Independent	Active
Michael	Kilmer	Independent	Associate
Leslie	Lafferty	Independent	Active
Kerry	Eaton	Independent	Active
Nathan	Fazio	Independent	Active
Roger	Leight	Independent	Active
Donald	Arnold	Independent	Active
Eric	Freling	Independent	Active
Jenny	Smith	Independent	Active
Paul	Smith	Independent	Associate
Patrick	Auth	Babst Calland	Associate
Matthew	Casto	Babst Calland, P.C.	Associate
Crystal	Gwynn	Brown Resource Group, Inc.	Associate
Jamie	Perdue	Brown Resource Group, Inc.	Active
Mike	Brewster	Burleson LLP	Associate
Arnold	Conant	Conant Land Resources	Active
Bobby	Brown	Contract Land Staff	Active
Ronnette	Lawrentz	Contract Land Staff, LLC	Associate
James	Lowe	Energy Corporation of America	Active
Markisha	Buice	EQT Production Company	Associate
Billy	Miller	EQT Production Company	Active
Ryan	Lang	Exterra Resources, LLC	Active
Wayne	Johnson	Go Water/ Culligan	Associate
Lou	Clark	Holland Services	Associate
Shauna	Clark	Holland Services	Associate
Tyler	Herget	Huntley & Huntley	Active
Matt	Fox	Independent	Active
Travis	Buttrey	Independent	Associate
Jason	Povlish	Independent Landman	Active
Joseph	Stocking	Long Consulting Group, LLC	Active
Elizabeth	Rice McDow	McDow Land Services, Inc	Active
Norman	Sewell	Norman Sewell LLC	Active
Melissa	Rosic	Northeast Natural Energy, LLC	Associate
Kellye	Kimberland	Oil & Gas Title Abstracting, LLC	Active
McKenzie	Bucher	Precision Oil and Gas	Associate
Robert	Napier	Robert Napier, LLC	Active
Charles	Smith	S & A Property Research	Associate
Judy	Mellor	S & A Property Research LLC	Active
Bradford	Lewis	S & A Property Research LLC	Active
Amanda	Mundy	S&A Property Research	Associate
Tonya	Wells	S&A Property Research	Associate
Melissa	Campbell	S&A Property Research	Active
Lyndsay	Richards	S&A Property Research, LLC	Associate
Devin	Russell	S&A Property Research, LLC	Active
Tim	Jackson	T. S. Dudley Land Company	Active



## New Members Continued– March 2015

First Name	Last Name	Employer	Member Type
Bryan	Gaetani	The Law Office of Cara C. Davis	Active
Rachel	Garnes	Top Notch Land Service	Associate
Reagan	Tetreault	Top Notch Land Services	Associate
Sam	Schwartzmiller	Utica Resource Partners, LLC	Active
Erin	West	Utica Resource Partners, LLC	Active
Dorraine	Allen	Victory Resources & Land Management, LLC	Associate
Sean	Kohl	Vorys Sater Seymour and Pease LLC	Associate
Thomas	Ellis	Western Land Services, Inc	Active
Charles	Pearson	XTO Energy Inc.	Active
Braden	White	XTO Energy Inc.	Active
Kelly	Sanders	XTO Energy Inc.	Active
Rodney	Black	XTO Energy Inc.	Active



ENERGY LAND SERVICES FOR THE 21ST CENTURY

**Lease Negotiation & Acquisition | Title Service | Project Management | Complex Curative  
Due Diligence | GIS Data & Mapping | Right of way Acquisition | Data Analysis & Reporting**

**reaganresources.com**



**Offices in Oklahoma City and Denver • Serving the Central United States**



## CONTINUING EDUCATION OPPORTUNITIES

AAPL offers various educational programs, workshops and regional institutes for landmen as well as oil and gas professionals. The association also provides review and testing opportunities for those interested in obtaining RL, RPL and CPL certification designations.

The AAPL will be offering a Field Landman Seminar **FREE** to AAPL Members at the below dates and locations:

Bridgeport Conference Center

Bridgeport, WV

Thursday, April 30, 2015

[Click Here for More Information and to Register](#)

Wheeling Island Hotel and Casino

Wheeling, WV

Thursday, May 7, 2015.

[Click Here for More Information and to Register](#)

Both events will begin with Registration and Happy Hour at 5:00 PM followed by Dinner at 6:00 PM. The event will also include an "AAPL Update" and two speaker presentations. Attendees will have the opportunity to earn 2.00 RL/RPL/CPL credits.

Michael Late Benedum Chapter  
American Association of Professional Landmen

[www.mlbc-aapl.org](http://www.mlbc-aapl.org)

## Additional Opportunities

### [Oil & Gas Lease Fundamentals - Pittsburgh, PA](#)

May 14, 2015

### [WI/NRI Workshops](#)

[Morgantown, WV](#)—May 14, 2015

[Pittsburgh, PA](#)—May 15, 2015

[Canton, OH](#)—May 16, 2015

### [Oil & Gas Land Review, CPL/RPL Exam](#)

June 3-6, 2015

## CORPORATE SPONSORSHIP LEVELS

### ***Platinum \$5,000.00 per year***

#### Benefits of Platinum Sponsor

- Logo on the corporate sponsor board at every meeting along with the meeting sponsor board.
- Logo on the back of every Takeoff and the bottom of every membership email.
- Receive three meeting/dinner passes for each meeting for one year.
- Receive one free Full Page advertising ad.
- Receive free Half Page ad in the takeoff per year.
- Logo on Golf Outing sponsorship boards.



### ***Gold \$2,500.00 per year***

#### Benefits of Gold Sponsor

- Logo on the corporate sponsor board at every meeting.
- Logo on the back of every Takeoff and the bottom of every membership email.
- Receive one free Half Page advertising ad in the Takeoff per year.
- Logo on Golf Outing sponsorship boards.



### ***Silver \$1,500.00 per year***

#### Benefits of Silver Sponsor

- Logo on the corporate sponsor board at six meetings.
- Logo on the back of every Takeoff and the bottom of every membership email.
- Receive one free Half Page advertising ad in the Takeoff per year.



### ***Bronze \$750.00 per year***

#### Benefits of Bronze Sponsor

- Logo on the corporate sponsor board at three meetings.
- Logo on the back of every Takeoff.



### ***Advertising in The TakeOff***

Full page ad \$500.00 per month

Half page ad \$250.00 per month

### ***Dinner Meeting Sponsorship***

Cost \$250.00 per meeting. Companies will receive advertising at the dinner meeting as well as your logo displayed on our website for the month of the meeting you sponsor.

To secure a corporate sponsorship, advertise in the Take-Off, or if you have any questions please contact Tara White @ [twhite@mlbc-aapl.org](mailto:twhite@mlbc-aapl.org). Please contact Jeremy White at [jwhite@eqt.com](mailto:jwhite@eqt.com) for dinner meeting sponsorships.

# MLBC Corporate Sponsors

## Platinum

**Babst | Calland**  
Attorneys at Law

  
Cabot Oil & Gas Corporation

**STEPTOE  
& JOHNSON**  
PLLC

**Mountaineer  
Keystone** 

THE LAW OFFICES  
— of —  
**CARA C. DAVIS**  
ATTORNEY AT LAW

**CALU**  
GLOBAL ONLINE

**EQT**


  
**COMPLETE TITLE SOLUTIONS**  
ENERGY LAND SERVICES

  
**JACKSON KELLY**  
ATTORNEYS AT LAW PLLC

**VORYS**

Higher standards make better lawyers.®

## Gold

  
Campbell Development L.L.C.

 **Lewis Glasser  
Casey & Rollins**  
PLLC  
LAW OFFICES

  
**Antero**  
Resources

  
**Bowles Rice**  
McDAVID GRAFF & LOVE LLP  
ATTORNEYS AT LAW

**alpha**  
FIELD SERVICES

## Silver

 **PENN-YORK**  
Land Services Corporation

**CINCO**   
ENERGY MANAGEMENT GROUP

 **BALDERSON**  
LAW OFFICE, PLLC

  
**Terra**  
TERRA SERVICES, LLC

 **LINDHOME & SONGSTER**

## Bronze

**Pechin**  
LAND SERVICES

 **Clearwater**  
land services, LLC

  
GEORGE MASON LAW FIRM, PSC

  
**Holland**  
SERVICES

**ARNOLD SCHULBERG**  
ATTORNEY AT LAW  
16591 Sagamore Bridge Way, Delray Beach, FL 33446  
304.760.2345  
aschulberg@schulberglaw.com

**HURON**  
LAND SERVICES, LLC  
304.760.2345  
16591 Sagamore Bridge Way  
Delray Beach, FL 33446  
aschulberg@schulberglaw.com

Oil & Gas Leasing  
Due Diligence  
Right-of-Way  
Title Curative



## 2014-2015 EXECUTIVE COMMITTEE

**President**

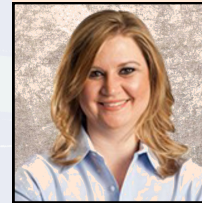
Anthony Farr, RPL  
Tioga Resources  
[afarr@tioga-resources.com](mailto:afarr@tioga-resources.com)

**Director**

Rex Cecil Ray  
EQT Production  
[cray@eqt.com](mailto:cray@eqt.com)

**Vice President**

Aaron R. Yost, CPL  
Percheron Energy  
[aaron.yost@percheronllc.com](mailto:aaron.yost@percheronllc.com)

**Director**

Christa Dotson  
EQT Production  
[cdotson@eqt.com](mailto:cdotson@eqt.com)

**Secretary**

John Kimbleton, CPL  
Latitude Land and Regulatory  
[jkimbleton@gmail.com](mailto:jkimbleton@gmail.com)

**Director**

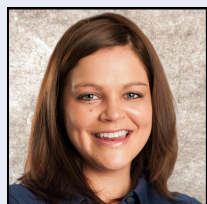
Justin Wolford, RPL  
ECA  
[jwolford@eca.com](mailto:jwolford@eca.com)

**Treasurer**

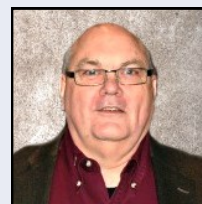
Jeremy Preston, RPL  
EQT Production  
[jpreston@eqt.com](mailto:jpreston@eqt.com)

**National Director**

Mark A. Acree, CPL  
Noble Energy, Inc.  
[macree1959@yahoo.com](mailto:macree1959@yahoo.com)

**Sergeant-At-Arms**

Britney Crookshanks, RPL  
Northeast Natural Energy  
[bcrookshanks@nne-llc.com](mailto:bcrookshanks@nne-llc.com)

**President Emeritus**

Charles E. Heilmann, CPL  
EQT Production  
[cheilmann@eqt.com](mailto:cheilmann@eqt.com)

**Executive Director**

Tara White  
MLBC  
[twhite@mlbc-aapl.org](mailto:twhite@mlbc-aapl.org)

## 2014—2015 COMMITTEE CHAIRS

Awards	Bruce Turner, CPL	<a href="mailto:bruce.turner@steptoe-johnson.com">bruce.turner@steptoe-johnson.com</a>
Bylaws	Chris Elswick	<a href="mailto:chris.m.elswick@gmail.com">chris.m.elswick@gmail.com</a>
Certification	James E. Talkington, Jr., CPL/ESA	<a href="mailto:jeta@frontier.com">jeta@frontier.com</a>
Education	Christa Dotson, RPL	<a href="mailto:cdotson@eqt.com">cdotson@eqt.com</a>
Ethics	Doug Richards	<a href="mailto:honordjr@aol.com">honordjr@aol.com</a>
Fall Golf	Steve Carr, RPL	<a href="mailto:steve.carr@tsdudley.com">steve.carr@tsdudley.com</a>
Finance	Jeremy White, RPL	<a href="mailto:jwhite@eqt.com">jwhite@eqt.com</a>
Historian	David Aman	<a href="mailto:davidaman@consolenergy.com">davidaman@consolenergy.com</a>
Marketing	Jesse Zirillo	<a href="mailto:jzirillo@dmclaw.com">jzirillo@dmclaw.com</a>
Membership	Lori Naser	<a href="mailto:lori.naser@ogta.com">lori.naser@ogta.com</a>
Directory	Crystal Murphy	<a href="mailto:cmurphy@tioga-resources.com">cmurphy@tioga-resources.com</a>
NAPE East	Aaron Yost , CPL	<a href="mailto:aaron.yost@percheronllc.com">aaron.yost@percheronllc.com</a>
Plate Program	Ben King, RPL	<a href="mailto:benjaminking@suddenlink.net">benjaminking@suddenlink.net</a>
Photography	Marlene Heilmann	<a href="mailto:marheilmann@yahoo.com">marheilmann@yahoo.com</a>
Scholarship	Justin Nixon, RPL	<a href="mailto:jrnixon@eqt.com">jrnixon@eqt.com</a>
Spring Golf	Aaron Yost, CPL	<a href="mailto:aaron.yost@percheronllc.com">aaron.yost@percheronllc.com</a>
Sponsorships	Jeremy White, RPL	<a href="mailto:jwhite@eqt.com">jwhite@eqt.com</a>
Website /Job Bank	Jeremy D. Preston , RPL	<a href="mailto:jpreston@eqt.com">jpreston@eqt.com</a>

## MLBC SCHEDULE

<u>Date</u>	<u>Location</u>	<u>Speaker</u>	<u>Topic</u>
<i>April 23, 2015</i>	<i>Parkersburg Art Gallery Parkersburg, WV</i>	<i>Anthony Farr</i>	<i>Oil &amp; Gas Museum</i>
<i>May 8, 2015</i>	<i>Oglebay Resort Wheeling, WV</i>		<i>Spring Golf Outing</i>
<i>June 11, 2015</i>	<i>Erickson Alumni Center Morgantown, WV</i>		<i>Officer Induction</i>
<i>July 24, 2015</i>	<i>PNC Park Pittsburgh, PA</i>	<i>Pittsburgh Pirates Game</i>	<i>Social</i>
<i>August 10, 2015</i>	<i>Valley Brook Country Club McMurray, PA</i>		<i>Fall Golf Outing</i>





















## MEMBERSHIP INFORMATION

**Michael Late Benedum**



**“The Great Wildcatter”**

The MLBC membership application is located on the website at [www.mlbc-aapl.org](http://www.mlbc-aapl.org). Please check your information on the website prior to submitting your renewal. The MLBC website has an updated version of the membership listing. Please use this resource if you can not find yours or others information in the directory. Please report any errors or omissions to Tara White at [twhite@mlbc-aapl.org](mailto:twhite@mlbc-aapl.org).

Notice of the application(s) of all potential Chapter members shall be published in the next regularly scheduled monthly Chapter “Takeoff” newsletter. Active members shall have the opportunity during for a period of thirty (30) days following the first publication to object to the potential members’ application. Such objections to membership approval may be submitted to any member of the Executive Committee and

shall be in writing. The Executive Committee shall take any such objection under counsel in the next regularly scheduled monthly Executive Committee meeting. A decision to accept or reject the membership application shall be determined by a majority vote at such meeting. The Executive Committee shall notify the applicant in writing of rejection.

Application for membership in the Chapter shall be subject to the approval by a majority vote of the Executive Committee at a regularly scheduled meeting, after the aforementioned thirty (30) day newsletter publication period, and shall require the signed approval by the acting President of the Executive Committee, as evidence of the Committee’s approval. Names of any and all newly approved members shall be read at the following regularly scheduled general meeting of the Chapter.



### MLBC WEBSITE

If you experience any problems using the website or if you have any suggestions, please contact Jeremy Preston via e-mail at [JPreston@eqt.com](mailto:JPreston@eqt.com).



### JOB BANK

The direct link for MLBC Job Bank is [www.mlbcjobbank.com](http://www.mlbcjobbank.com). If you have any questions, please contact Jeremy Preston via e-mail at [JPreston@eqt.com](mailto:JPreston@eqt.com).



### PHOTO ALBUM

We would like to share our Photo Album with you to show you what MLBC has been doing throughout the year. The direct link for MLBC Photo Album is [www.mlbc-aapl.org/VPhoto.php](http://www.mlbc-aapl.org/VPhoto.php).