

# Michael Late Benedum Chapter

American Association of Professional Landmen

## The Take-Off

February 2014

MLBC  
P.O. Box 955  
Bridgeport, WV 26330

### PRESIDENTIAL ADDRESS

I have sad news to report this time, the MLBC lost two longstanding well respected members, Walter A. (Red) Hussing, one of the MLBC founding members passed away in December and Mr. Larry Catsonis passed away in January. Please see their obituaries on page 11.

I want to take this opportunity to remind our Associate Members your membership in the Michael Late Benedum Chapter (MLBC) of the AAPL does not give you any association to the American Association of Professional Landmen (AAPL). It has come to my attention that some Associate Members have held themselves up to the public as such.

I would like to also take this opportunity to encourage all Associate Members to join the AAPL. If you joined the [MLBC](#) as an Associate Member and since joined the AAPL, be sure to update your profile with the MLBC so we can change your designation to an Active Member. Remember only Active Members may hold office or serve as Committee Chairpersons and vote on matters that relate to the relationship between the Chapter and the National Organization. (See the [MLBC By-Laws](#) Article IV) Check out the AAPL Webpage "[Why Join](#)" for more details.

All members of the MLBC are eligible to apply for the new WV Professional Landman organizational license plate – See our Committee Chair, Ben King's article on our progress.....**We need your help!!**

See you in Canonsburg, PA at the Hilton Garden Inn, February 13, 2014 for a full day seminar by Matt Vavro on Basics of Oil & Gas Operations. If you have not attended Matt's seminar you should make it a point to attend. I'm sure you will enjoy and learn. Our Dinner Meeting Speaker will be Sean Cassidy, speaking on Gaps in the Chain of Title and What Constitutes a Diligent Search.

February 13 will be your lucky day if you can attend and listen to either one of these wonderful speakers.

Charles E. "Chuck" Heilmann  
2014 MLBC President

### INSIDE THIS ISSUE

Secretary's Report .....	2
Member Spotlight .....	3
Director Report .....	4
55th Anniversary .....	7
Directory Notification .....	8
Sponsors .....	9
Just for Landmen .....	10
Remember our Members .....	11
MLBC Schedule .....	12
New Members .....	13
Dinner Meeting Photos .....	15
AAPL Sets Record Straight .....	16
Member Correspondence.....	17
Member Correspondence.....	18
Sponsorship Opportunities.....	19
AAPL JOA.....	20
Executive Committee .....	21
Committee Chairs.....	22
AAPL Landman Edition .....	23
Membership Information .....	32

### Upcoming events

Seminar "Oil & Gas Operation Basics"

February 13, 2014

Hilton Garden Inn

Canonsburg, PA

[Click Here to Register](#)

MLBC Dinner Meeting

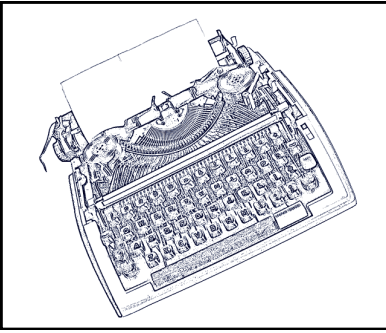
February 13, 2014

Hilton Garden Inn

Canonsburg, PA

[Click Here to Register](#)

## SECRETARY'S REPORT



Whether or not you're looking to find something "new" in your professional life in 2014, attend any number of MLBC events this year and the odds are pretty good you will.

Your executive committee and committee members understand the importance of providing the membership with excellent educational events as well as opportunities to expand professional networks. When planning, careful consideration is given to the following:

- Events (create a balance between education, fellowship and community outreach)
- Locations (hold in an area where many members can attend)
- Timing (comply with bylaws – 2<sup>nd</sup> Thursday of the Month and midweek for convenience)
- Speakers (locate excellent speakers who will present new and relevant topics)

Tons of planning and coordinating have gone into this year's slate of events. Make sure you register early to secure your spot at any one of these:

- This month we have Matt Vavro returning for a full-day seminar on February 13 in Cannonsburg. Hungry for some basics of oil and gas operations? Vavro is a subject matter expert and will keep us entertained the entire day.
- In March, we're holding a half-day seminar in Morgantown where a wide range of NEW topics will be presented.
- The April meeting is a 55<sup>th</sup> Anniversary celebration and will be held in conjunction with NAPE East in Pittsburgh. After NAPE on Thursday, Patrick Sweany will perform live at Easy Street!
- We're headed back to Oglebay Resort in June where we have **two (2) courses** booked for the annual spring charity golf event. But don't put your sticks away, you'll need them again in September at Nemaquin. And, we have **two (2) courses** booked there too!
- We're cheering on the Buccos at PNC Park in August on a private deck!

So, plan ahead and join your fellow Landmen at these exciting MLBC events where you're bound to make new friends, add new connections to your network, learn something new, or maybe even be presented with a new opportunity.

Aaron Yost, CPL  
2013-2014 MLBC Secretary



## MEMBERSHIP SPOTLIGHT



This month we catch up to Anthony Farr-Vice President of Operations for Tioga Resources, our MLBC Sergeant - at - Arms. Anthony's story begins as most young men. While tilling away at a local bank in Harrisville, West Virginia he dreamed of more. He began to speak at length with some of the Landmen that came into the bank, about what they do and their various job functions and it engaged his interest enough to make a career change. Even though he had driven by it numerous times, he decided to stop at the offices of Hawkeye Research and inquire about a job. It was there he met Cindy Torbeck the owner of Hawkeye and our current MLBC Vice President who decided to take a chance on a young guy with big dreams. Anthony quickly made his mark with Hawkeye, sporting an "all in attitude" coupled with a willingness to succeed that helped propel his career forward.

As Vice President of Operations at Tioga Resources, Anthony feels privileged to work on a day to day basis for their clients, he stated that "It's our job to strategically manage our clients prospects and to help achieve the best end result for our client through an ethical, honest approach to land work." That ethical and honest approach also helps with his MLBC duties as Sergeant - at - Arms. It is the Sergeant's duty to make sure the meetings are run in order and to make sure compliance to the by-laws are adhered to.

Anthony also takes the time to volunteer with his local church and their numerous local outreaches. He started the Morty & Ant Facebook page that raises funds for local charities. To date they have raised over \$10,000.00 dollars for the American Red Cross and The Salvation Army. He is proud to be a part of the MLBC through our numerous charitable efforts that coincides with his own convictions.

Anthony takes his involvement with the MLBC very seriously. He credits the MLBC with his entire career. He started out going to the meetings just to take notes but quickly found himself involved and engaged in all that the MLBC has to offer. It is invaluable to young land professionals to become involved with the AAPL and MLBC. It will help further their careers and help keep them abreast of the changes in our ever evolving industry. Just seek out Anthony at any MLBC event and have a conversation with him. You will quickly see how with a little hard work, integrity and an "all in attitude" you can achieve all your dreams.

-Justin R. Wolford



## MLBC DIRECTORS REPORT

On December 7-8, 2013, I attended the AAPL quarterly Board of Directors meeting at The Greenbrier in White Sulphur Springs WV. During the meeting, a number of topics were introduced that would be of interest to our local association members:



- The 2014 annual meeting will be in Montreal, Quebec Canada. It is scheduled for June 25-28, 2014. Registration opened to AAPL membership on January 20, 2014. The normal process of utilizing Wyndam Jade for conference registration, local activities and hotel selection will continue. Register early to avoid complication with the host hotels and local activities filling up. **Don't forget, you will need a Passport to go in and out of Canada.** Magazine, e-mails and website updates will regularly focus on the annual meeting with information about registration, seminars and activities.
- AAPL's Building Committee made a recommendation to the Executive Committee and Board of Directors for the purchase of a property near downtown Fort Worth to be utilized as the new headquarters for AAPL. The building is over 16,000 square feet, which is about 60% bigger than the current office and will cost approximately \$4 million. The board authorized the EVP to enter into a purchase agreement for the building with a due diligence period to investigate the typical title, environmental and technical details prior to moving forward with a commitment to close. A due diligence report is due to the Board prior to the anticipated closing date outlining any issues.
- NAPE Rockies was held in early December with anticipation of a similar attendance as NAPE East, around 150 to 180 exhibitors and 2,500 people. A report on NAPE Rockies will come out after the first quarterly Board meeting. Registration is open for Winter NAPE (February 5-7 in Houston) and NAPE East (April 9-11 in Pittsburgh). AAPL is expecting growth at NAPE East to continue in 2014 and expects it to be a well-attended event primarily to the continued growth of the Marcellus and Utica shale plays. NAPE has renamed its summer event to NAPE South. The format change is expected to redirect this events activity to regional plays in the Gulf Coast, Permian and Mid-Continent areas. Also, NAPE International, held around Winter NAPE, will also be more focused in 2014. NAPE Expos continue to be a large part of AAPL's income which has aided in the associations robust growth in income and balance sheet over the years.
- Education still rides high on AAPL's agenda and will produce over 90 education events in 2014. A number of these events will be videoed for the education archives so people not able to attend will get the benefit of the materials and information covered at the event. Some events, such as the Landman 411 series, are offered as videos to replay and are simulcast on the web so members can access the event via computer from their location. The Education Committee continues to work on an Ethics Program which will be rolled out in 2014 along with a much improved (and harder) CPL exam. Both will include additional classroom opportunities in support of the new curriculums. Field Landman Seminars (FLS) will be continued in 2014 with over 20 venues being scheduled. There are 6 AAPL Institutes, including the Appalachian Land Institute held in our region in the fall. Lots of opportunities for Landmen to receive education and credits toward certification.
- AAPL's Legislative and Regulatory Committee remains very busy. This committee commits many hours and resources on tracking regulatory and legislative issues that affect the industry which spans all states in the US and Canada. Its update to the Board is a comprehensive and detailed report.

## MLBC DIRECTORS REPORT CONTINUED

Should you desire to see the report, please contact me or Cindy Perdue at Steptoe and Johnson for details. The committee is always interested in hearing from members and receiving information that would be beneficial to the association.

- The Board is reviewing opportunities to increase giving to the Landman Scholarship Trust (LST) in 2014. Anticipate a larger annual donation in 2014, plus the possible transfer of a sizable donation to the LST so that it will be self-supporting in the future. Donations from companies and individuals are still accepted and would be a good way for members to show support for AAPL's efforts in making available scholarships for students in the accredited PLM/EM programs.
- AAPL membership is approaching 20,000 members. It is anticipated that AAPL will grow to over 25,000 members in the next couple of years. Annual renewals will be coming out soon, so please remember to renew and solicit your colleagues to join. The value of membership is not in the number of members, but measured by the contribution and participation of its membership in events and the organization itself. Please consider joining an AAPL committee so you can meet others and build on your network of Landmen.
- The new AAPL Company Recognition Program had over 30 companies committed to hiring and promoting AAPL members as of this past fall. This number has been steadily growing and it is hoped the majority of companies will support AAPL's efforts to hire AAPL members, use contractors that are AAPL members and require its employees to join AAPL and the local Landman associations.
- The AAPL Marketing Committee has numerous items on its agenda including expanding the Member Mark campaign in the Eagleford and Bakken resource plays, expanding social media on Facebook, Twitter and LinkedIn, development of marketing videos which will run on the AAPL website, NAPE events and social media, and working with local associations to promote events. The committee has also redesigned the AAPL booth which is used at numerous functions to promote the organization. The new design brings in an updated look focusing on core areas of industry including education, government relations, ethical practices and standards of practice of our members.
- AAPL Awards nominations are open. Local associations are encouraged to submit nominations in all categories, including Best Director's Report, Best Member's Communication, Best Newsletter, Best Media Communication, Association of the Year, Best Article, Community Service, Humanitarian, Lifetime Achievement and Landman of the Year. The committee will meet in February to make its recommendations.
- The AAPL Certification Committee was very busy in 2013 with over 1000 applications for RPL and CPL being reviewed. In addition, the AAPL staff reviewed an additional 200+ applications for RL status, which do not require action or review by the committee. An improved checklist was designed for the staff to provide important information to the committee for review of applications. The committee will meet during Winter NAPE to discuss important topics including CPL (Certified Petroleum Landman) and CPL (Certified Professional Landman) distinctions. AAPL does not hold a trademark on CPL, therefore some certification programs (not PLM or EM degrees) have been using the CPL acronym upon completion of the class as a means to reflect an increased status of its graduates. Other topics such as Landmen Experience

## MLBC DIRECTORS REPORT CONTINUED

verses Land Work Experience (used on the RPL and CPL applications), sponsor requirements and ethics remain strong issues for discussion.

- AAPL President Don Key reported the Council on Presidential Perspectives has completed a report which will be discussed at the next Board meeting. Topics such as Education at the accredited universities, Professional Education of our members, Public Advocacy, Member Benefits, Association Outreach, Planning/Development and Investments were included in the report. Jack Richards, Chairman of this committee was unable to attend the December Board meeting, so the report will be presented in March.
- The AAPL Technology Committee recommended and the Board approved additional funding of \$600,000 which included hiring a consultant to review and make recommendations on system updates and new software which would improve the issues the association is having with the MemberSuite software. Expanded conferencing and meeting technologies, mobile apps and discussion forums will be part of the replacement solutions.
- AAPL reports a strong balance sheet with fiscal year-end assets at June 30<sup>th</sup> 2013 of \$30,615,261, an increase of 25% over the same period in 2012. Income increased 11.5% from \$8.2 million to \$9.2 million, and expenses increased 10.4% from \$6.8 million to \$7.5 million, year over year. In addition, investments from the Martin Luther accounts increased 35.6% over the past 12 months, which further assisted the growth in overall AAPL assets.

The MLBC and our region is well represented on the AAPL board and committees by a local members. The interests of our Appalachian Landmen are being addressed along with the rest of the country.

Should you have any concerns or questions I should address to the AAPL Executive Committee or Board of Directors, or bring to the attention of the MLBC Executive Committee, please feel free to contact me at [macree@nobleenergyinc.com](mailto:macree@nobleenergyinc.com).

-Mark Acree



## 55TH ANNIVERSARY BASH



As many of you know, MLBC's volunteers on the NAPE East Committee have been hard at work planning a 55<sup>th</sup> Anniversary Bash in conjunction with the Expo in Pittsburgh. Well, the plans are set and it's time to make an announcement - a really big announcement. Negotiations have been made with Easy Street, in downtown Pittsburgh, to close its doors for the night to the general public. The doors will only be open for MLBC's social event. Easy Street is a top shelf bar/grille/restaurant located at the base of The Atrium in the 45 story tall One Oxford Center. Check it out here:

<http://www.easystreetpittsburgh.com/>

The doors will open at 5:30 and at approximately 7:00, national recording artist Patrick Sweany and his band will take the stage for an evening of top shelf rock, blues, soul, folk, and whatever else he decides to serve up. Lovers of live music probably already know who Patrick Sweany is and are both excited and *shocked* at the prospect of him playing MLBC's event. If you are part of the group that has never heard of him – you owe it to yourself to check him out:

<http://www.patricksweany.com/>

After four critically acclaimed albums – two of which were produced by longtime collaborator and grammy award winner Dan Auerbach of The Black Keys – Patrick is pretty much touring the entire United States, the UK, and has some dates in the Netherlands coming up in 2014. He is a regular at music festivals all over the country; in fact, he looks to be playing a festival in Austin, TX a couple days after our event! Currently, he is touring with the Tedeschi Trucks Band and Vanessa Carlton around the eastern US. His albums are a mix of americana, blues, soul, and rock, but his live shows are where he really shines. Alright, get ready. I'm going to try to describe it. Think The Black Keys meets Allman Brothers Band meets James Brown meets Jackson Browne (note the dual J. Brown(e) references!) and they all jam on a cover from an old Chicago blues legend like Hound Dog Taylor. It's pretty entertaining.

In case you aren't inclined to take my word for it, and I don't blame you, consider just a few industry reviews:

*"...soon-to-be-legendary..."* – Rolling Stone

*"...the man is a beast, to say the least. You know how you have your favorite musicians, and then they have their favorite musicians? Well, Sweany is one of them."* – Paste Magazine

*"...a hard-nosed and robust paean to **Ray Charles, Lightnin' Hopkins, and Eddie Hinton.** That type of company is as brazen as it comes. And much like his blues heroes, Sweany's swagger on this album adds up to a gritty and unheralded wrecking-ball."* – Hybrid Magazine

The MLBC is extremely fortunate and proud to be able to set up this social event. If you enjoy good music and good drinks with your good friends in the MLBC, then you do not want to miss this event! Once the event registration is open, make sure to reserve your spot - it will sell out FAST!

-Jeremy White



**Advertising  
Opportunities**



## 2014 Membership Directory Advertising

Company Name: \_\_\_\_\_  
 Contact Person: \_\_\_\_\_  
 Email Address: \_\_\_\_\_  
 Billing Address: \_\_\_\_\_  
 Telephone: \_\_\_\_\_ Fax: \_\_\_\_\_  
 Authorized By: \_\_\_\_\_ Date: \_\_\_\_\_

Place my ad on Half / Full Page. The ad size is:

☐

Full Page (Color) \$300  
4 1/2" w X 7 1/4" h

☐

Half Page (Color) \$225  
4 1/2" w X 3 1/2" h

☐

Full Page (Black/White) \$200  
4 1/2" w X 7 1/4" h

☐

Half Page (Black/White) \$125  
4 1/2" w X 3 1/2" h

**\*\* Camera Ready Artwork is Preferred \*\***

Total Cost for 2014 MLBC Membership Directory Advertisements \$ \_\_\_\_\_

**Deadline for Advertisement is March 15, 2014**

*Please return completed form to:*

Crystal Murphy, Tioga Resources, LLC, 917 West Main Street, Suite 202, Bridgeport, WV 26330  
 Telephone: 304-848-2206 Fax: 304-848-2212 Email: [CMurphy@Tioga-Resources.com](mailto:CMurphy@Tioga-Resources.com)

The Michael Late Benedum Chapter of AAPL will be publishing its updated Membership Directory in April 2014. The member information in the directory will be pulled directly from the MLBC website; please ensure your information is up to date and accurate. If you need help accessing your MLBC account, please contact Tara White at [twhite@mlbc-aapl.org](mailto:twhite@mlbc-aapl.org).

If you, or any affiliate(s), are interested in placing an ad in the 2014 Directory, the MLBC is offering full and half page advertisements. Please see the following form for details. For more information, please contact one of the members below.

Crystal Murphy, Tioga Resources, LLC  
 304-848-2206 Ext 102  
[CMurphy@Tioga-Resources.com](mailto:CMurphy@Tioga-Resources.com)

Steve Johnson, PDC Energy  
 304-842-3597 Ext 6558  
[Steve.johnson@pdce.com](mailto:Steve.johnson@pdce.com)



## MLBC Corporate Sponsors

### Platinum



### Gold



### Silver



### Bronze



## February 2014 Dinner Meeting Sponsors

***Bryson Kuba, LP***

***BWT LAND MANagement, LLC***

***Complete Title Solutions***

***Honor Resources Company***

***Noble Energy***

***Smith Land Survey***

***Steptoe & Johnson PLLC***

***T.S. Dudley Land Company***

***Western Land Services***

***Thank You For Your Support!***

## PROFESSIONAL LANDMAN LICENSE PLATE



***Are you proud of what you do for a living and consider yourself a “Professional Landman”,*** well now’s the time to step up to the plate and do something about it. West Virginia members of the MLBC have a great opportunity to become the first to sport their very own Landman plate on their vehicle. In conjunction with the WV Department of Motor Vehicles, we have been approved to have the first “Professional Landman” plate in the United States. Hard to believe we get to be first in something for once. We are also in the process of applying for the same opportunity for our members in Ohio and Pennsylvania.

If you want to tell the world that you are a professional Landman and are proud of what you do, now’s the time to act. We have less than five months remaining to collect 250 applications to submit to the WVDMV to complete the process. The sooner we get this step complete, the sooner we can start the next step. If we meet that deadline then the first 250 plates will be produced and we’re off and running with our MLBC special organizational plate. Members will then be able to go online at the WVDMV and download an application and follow the steps in getting a new plate for their vehicle. They also can use our website.

But first things first! We need your support in this effort. The initial cost is \$70.00 for the first year and only \$45.00 for renewals after the first year. Plates expire on July 1 each year and you must be a member in good standing with MLBC, and your vehicle must be registered in the state of West Virginia. There are no limits to how many plates an individual or company can have.

Ownership of an organizational plate is like a moving billboard for our chapter. The benefits of ownership are unlimited. Just think of the conversations that will get started when someone asks, “What’s that plate all about on the back of your car?” Or what is a Landman, and where you can go with that question. More so, you are telling folks everywhere you go with your vehicle that you are a “Professional” and are not afraid to back it up. There are other benefits to our chapter such as national recognition, recruitment of new members etc. I was shocked when doing my research for this project that AAPL had no organizational plates out there in all the oil and gas producing states.

I thought that we would have had hundreds of applications in the first month; however, applications to date have been very slow in coming in - we need at least 225 members to step up and order one of these plates. The process is as simple as logging on to MLBC, printing an application, and mailing to the required address along with your check or a receipt showing you paid online with a credit card at the MLBC store. We have one member that went to the trouble of registering several of his vehicles in the state of West Virginia just to be eligible to apply for one of these plates. I call that pride and dedication of his profession.

Albert Einstein said that *Insanity* was doing the same thing over and over again and expecting different results." Or in my words, “If you do what you’ve always done WV, you’ll get what you’ve always gotten”. In this case, let’s quit being last in everything and be proud of who we are as “Professional Landmen” and take advantage of this opportunity and purchase one these plates.

Ben King, RPL  
Special License Plate Chairman  
[benjaminking@suddenlink.net](mailto:benjaminking@suddenlink.net)



## IN MEMORY



Walter A. (Red) Hussing, Age 100, of Mt. Lebanon, PA passed away on December 3<sup>rd</sup>, 2013. In July of 1959, the Michael Late Benedum Chapter of the AAPL was formed with Mr. Hussing being one of the original 13 founding members, each of whom represented the major oil and gas companies operating in the Appalachian basin at the time. Mr. Hussings career began as a lease man, for the Peoples Natural Gas Company. He was heavily involved though in mineral acquisition for the newly developed Leidy Storage field in north central Pennsylvania, operated by the Consolidated Natural Gas system. Throughout his career he was instrumental in the acquisition of mineral rights for drilling, and gas supply, along with the development of additional natural gas storage fields including Oakford and Rager Mountain during the 1960's. Mr. Hussing ended his career as Manager Land, Lease and Right of way for the Peoples Natural Gas in 1977 and went on to form Scott and Hussing, a production company before retiring in 1981.



Larry W. Catsonis age 64 of Pompano Beach, Fla. and North Canton, Ohio, joined the Lord on Friday, Jan. 24, 2014

He was born March 28, 1949 in Bluefield, W.Va. to Helen (Gilmore) and the late Joseph T. Catsonis. He was a graduate of Philip Barbour High School in Philippi, W.Va., and received a Bachelor of Business Administration from Fairmont State University. Larry was a Certified Professional Landman. A long-time veteran of the oil and gas industry, he owned and operated his own land services companies, Apex Land Corp. and Anchor OGM, LLC. He held membership in NALA, MLBC, OOGA, and AAPL. Larry earned honors as a high school football player and a college wrestler. In his spare time, he enjoyed being with his family and watching West Virginia Mountaineers and Pittsburgh Steelers football games.

In addition to his father, he is preceded in death by his brother, Ronald J. Catsonis. He is survived by his wife, Sarah K. (Hall) Catsonis; children, Larry J. Catsonis, Tara A. Catsonis, and John T. Catsonis, all of North Canton; mother, Helen Catsonis of Boynton Beach, Fla.; sister, Deborah Catsonis of Sugar Land, Texas; brother, William 'Bill' Catsonis of Ft. Lauderdale, Fla.; and niece and nephew, Kristin and Travis Catsonis.

Services will be held at 4 p.m. on Friday, Jan. 31, 2014 in the Karlo-Libby Funeral Home. Friends may call from 2-4 p.m. Friday, two hours before the service at the funeral home. In lieu of flowers, memorial contributions may be made to Aultman Compassionate Care Center, 2821 Woodlawn Ave. NW, Canton, OH 44718.



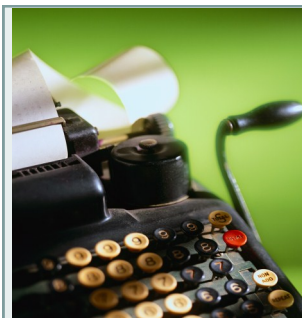
## MLBC SCHEDULE

<u>Date</u>	<u>Location</u>	<u>Speaker</u>	<u>Topic</u>
<i>February 13, 2014</i>	<i>Hilton Garden Inn Canonsburg, PA</i>	<i>Full Day Seminar Matt Vavro Dinner Sean Cassidy, Esq</i>	<i>Basics of Oil &amp; Gas Operations  Gaps in the Chain of Title &amp; What Constitutes a Diligent Search</i>
<i>March 13, 2014</i>	<i>Waterfront Place Hotel Morgantown, WV</i>	<i>Half Day Seminar Dinner: Russ Schetroma</i>	<i>TBD TBD</i>
<i>April 10, 2014</i>	<i>Easy Street Pittsburgh, PA</i>	<i>National Recording Artist Patrick Sweany</i>	
<i>May 8, 2014</i>	<i>Muskingum Convention Center Zanesville, OH</i>	<i>TBD</i>	<i>TBD</i>
<i>June 12, 2014</i>	<i>Oglebay Resort Wheeling, WV</i>	<i>Spring Charity Golf Outing</i>	
<i>August 7, 2014</i>	<i>PNC Park Pittsburgh, PA</i>	<i>Pittsburgh Pirates Game</i>	
<i>September 9, 2014</i>	<i>Nemacolin Woodlands Resort Farmington, PA</i>	<i>Fall Charity Golf Outing</i>	

## 2014 REGIONAL AAPL EVENTS

<i>February 27</i>	<i>Field Land Practices and RPL Exam Boardman, OH</i>
<i>March 3</i>	<i>Pooling Seminar Pittsburgh, PA</i>
<i>May 29-30</i>	<i>JOA Workshop Mars, PA</i>

For more information please visit [www.landman.org](http://www.landman.org).



John Kimbleton reports  
the bank balance is  
\$150,220.03.

## NEW MEMBERS– JANUARY 2014

First Name	Last Name	Employer	Member Type
Myrna	Coleman	Independent	Associate
Paul	Atencio	Babst Calland	Associate
William	Nickerson	Babst Calland	Associate
Michele	DeVaughn	Continental Land Resources	Associate
Mackenzie	Kline	EnerVest Operating LLC	Associate
Janna	Arnold	EQT Midstream	Active
James	Horner	EQT Production Company	Active
Douglas	Walters	Honor	Active
Dotty	Hayes	Honor Resources	Associate
Christopher	Anderson	Honor Resources Company	Associate
Charles	Dennis	Independent	Active
Scott	Link	Independent	Active
Anthony	Faini	Independent	Active
Richard	Holley	Independent Contractor	Associate
Bridget	Ferris	Law Offices of Cara Davis	Associate
Reginald	Johnson	Law Offices of Cara Davis	Associate
Bobby	Gordon	Law Offices of Cara Davis	Associate
Albert	Macre	MidWest Land Services	Associate
Philip	Minor	MidWest Land Services	Associate
Chase	Butler	MidWest Land Services	Associate
Charlie	Pavlik	MidWest Land Services	Associate
Albert	Macre Jr.	MidWest Land Services	Associate
Todd	Carte	Mountaineer Land Services	Active
Rick	Knopp	Mountaineer Land Services	Associate
Carla	Ballone	Noble Energy, Inc.	Associate
Patrick	Green	Noble Enrgy, Inc.	Active
Haley	Morris	Paloma Resources	Active
Jonathan	Pettit	Paloma Resources III	Active
Scott	Preston	Self	Associate
William	White	Seneca Technologies	Associate
Lester	Hebert	Shell Oil	Active
David	Sheets	Terra Services LLC.	Active
Trisha	Sucanic	The Law Offices of Cara C. Davis	Associate
Catherine	George	The Law Offices of Cara C. Davis	Associate
Tia	Chomiak	The Law Offices of Cara C. Davis	Associate
Mary Ann	Carbonara	The Law Offices of Cara C. Davis	Associate
Lea	Chon	The Law Offices of Cara C. Davis	Associate
Michelle	Thomas	The Law Offices of Cara C. Davis	Associate
Jenna	Cowan	The Law Offices of Cara C. Davis	Associate
Cassandra	Holets	The Law Offices of Cara C. Davis	Associate
Tiffany	Hixson	Tiffany H and Co.	Active
Melissa	Hennen	Topnotch	Associate
Connie	Hardman	Topnotch	Associate
Jacinto	Nunez	Vorys, Sater, Seymour and Pease	Associate
Abigail	Marusic	Vorys, Sater, Seymour and Pease LLP	Associate
Joshua	Bentley	White Oak Properties	Active
Pam	Fleak	White Oak Property Research, LLC	Active



Save the date

MLBC  
Annual Spring  
Charity  
Golf Event

benefiting  
WVU Children's Hospital  
Oglebay Resort  
- Palmer & Jones Courses

 WVU Healthcare  
Children's Hospital



June 12, 2014



# JANUARY DINNER MEETING RECAP

## BRIDGEPORT, WV



# AAPL Seeks to Set the Record Straight on Role of Landmen

Landmen, rightly or wrongly, sometimes have a bad reputation. Landmen fulfill an important role in signing landowners to leases to allow shale drilling on or under their property. The common perception (misperception) is that a landman swoops in to town and using equal parts carrot and stick, entices/cajoles/pressures dimwitted country bumpkin landowners into signing a lease they might not have otherwise signed (see [MDN Goes to the 'Promised Land'](#)). Are there some bad landman apples in the barrel? Like any profession, the answer is yes (see [When Landmen Go Bad: Butler, PA Landman Arrested for Fraud](#)). However, the vast majority are honest, upstanding and dedicated professionals—and they do a job vital to the drilling process. The American Association of Professional Landmen (AAPL) has 18,000 members. They recently launched a public relations campaign called “Meet Us” in which they use short videos to convey the truth about who landmen are, what they do, and how they do it..

A press release issued yesterday by the AAPL:

*This fall, the American Association of Professional Landmen (AAPL) is helping landowners in oil and gas shale plays across the United States learn about the landmen living and working in their communities with two words: “meet us.”*

*AAPL, the professional association for more than 18,000 land professionals across the U.S. and in Canada, has launched an educational campaign to introduce the land profession to landowners living in emerging shale plays with little oil and gas industry knowledge. The campaign features seven short videos of AAPL landmen from across the country explaining what landmen do and the role landmen play in the oil and gas industry.*

*The videos are being launched through an online advertising campaign this fall in 14 markets throughout the Barnett, Eagle Ford, Haynesville-Bossier, Marcellus, Monterrey, New Albany, Niobrara and Woodford shale plays as well as on select national oil and gas trade websites. The advertisements encourage the public to “meet us” and direct landowners to [AmericasLandman.com](#) where they can access all seven videos and learn more about AAPL and the land profession.*

*To date, the “meet us” campaign has been exceptionally well received by the public, garnering over 7.3 million impressions across 30 media outlets and a 1,100 percent increase in website traffic to [AmericasLandman.com](#) within the first 10 days.*

*Don Key, president of AAPL, explained: “This incredible response by the public indicates that landowners across the U.S. are eager to know about landmen and what they do. The ‘meet us’ campaign has uncovered a significant need for public education about the land industry, and AAPL is proud to be leading those education efforts.”*

*Since 1956, members of the American Association of Professional Landmen (AAPL) have publicly committed to abiding by the association’s Code of Ethics and Standards of Practice for the land profession. Landowners who interact with AAPL members to lease oil and gas rights on their property can have confidence they’ll be treated in a fair and ethical manner.*

*About the American Association of Professional Landmen*

*The American Association of Professional Landmen unites more than 18,000 landmen and land-related persons throughout 44 affiliated local associations in the United States and in Canada. AAPL serves as the voice of the landman profession to encourage fair trading terms that work in the best interest of all parties, wise utilization of natural resources and responsible employment of the land’s surface. Visit [AmericasLandman.com](#) to learn more.\**

\*American Association of Professional Landmen (Nov 21, 2013) - [American Association of Professional Landmen Launches Educational “Meet Us” Campaign](#)

Visit [this page](#) to watch the video series produced by the AAPL—worth your time.

This is a reprint from the Marcellus Drilling News. You may visit their site at <http://marcellusdrilling.com>.

## MEMBERSHIP CORRESPONDENCE

December 9, 2013

MLBC of the American Association of Professional Landmen Scholarship

Michael L. Benedum Chapter of the American Association of Professional Landmen

PO Box 955

Bridgeport, WV 26330

To Whom It May Concern,

My name is Nicholas Lambert and I am writing this letter to show my appreciation for all the opportunities that you have made possible for me. I am truly grateful to be a part of a program that has opened a lot of doors for me.

Currently, I am a Senior here at Glenville State College and I am majoring in Landman Technology. Also here I at Glenville, I am on the college fishing team where we travel the U.S. competing on different lakes against other elite college fishing teams in bass fishing tournaments.

Before I came to attend college here at Glenville, I attended Westside High School in Wyoming County. At Westside I played football and basketball throughout my four years there.

Once again I am truly grateful for everything that you have done for me and the Hidden Promise Foundation.

Sincerely Thankful,

Nicholas Lambert



## MEMBERSHIP CORRESPONDENCE

December 6, 2013

MLBC of the American Association of Professional Landmen Scholarship

Michael L. Benedum Chapter of the American Association of Professional Landmen

PO Box 955

Bridgeport, WV 26330

Dear MLBC of the American Association of Professional Landmen scholarship donor,

I would like to take this opportunity to express my sincere thanks for the scholarship that you have so generously bestowed on me. My name is Wayne S Johnson and I have one son who is a high school senior and one son who is a junior at Davis & Elkins College. When I started college here at Glenville State College, I had hoped to provide a good example to my sons to follow and your generous scholarship has helped in many ways. I will graduate in December of 2014 with a Major in Landman Technology and a minor in Management. I was raised in Canon City, Co. but have made my home in Calhoun County WV for the last 25 yrs. I plan on moving to Harrison County, WV after my youngest son graduates high school this summer, and to look for full time employment immediately upon my graduation from GSC. I am currently a member of the GSC Landman Association and am currently carrying a 3.3 GPA.

Once again, I want to convey my appreciation for choosing me to be the recipient of this beneficial scholarship.

Sincerely,

Wayne S. Johnson



## CORPORATE SPONSORSHIP LEVELS

### **Platinum \$5,000.00 per year**

#### Benefits of Platinum Sponsor

- Logo on the corporate sponsor board at every meeting along with the meeting sponsor board.
- Logo on the back of every Takeoff and the bottom of every membership email.
- Receive three meeting/dinner passes for each meeting for one year.
- Receive one free Full Page advertising ad.
- Receive free Half Page ad in the takeoff per year.
- Logo on Golf Outing sponsorship boards.



### **Gold \$2,500.00 per year**

#### Benefits of Gold Sponsor

- Logo on the corporate sponsor board at every meeting.
- Logo on the back of every Takeoff and the bottom of every membership email.
- Receive one free Half Page advertising ad in the Takeoff per year.
- Logo on Golf Outing sponsorship boards.



### **Silver \$1,500.00 per year**

#### Benefits of Silver Sponsor

- Logo on the corporate sponsor board at six meetings.
- Logo on the back of every Takeoff and the bottom of every membership email.
- Receive one free Half Page advertising ad in the Takeoff per year.



### **Bronze \$500.00 per year**

#### Benefits of Bronze Sponsor

- Logo on the corporate sponsor board at three meetings.
- Logo on the back of every Takeoff.



### **Advertising in The TakeOff**

Full page ad \$500.00 per month

Half page ad \$250.00 per month

### **Dinner Meeting Sponsorship**

Cost \$250.00 per meeting. Companies will receive advertising at the dinner meeting as well as your logo displayed on our website for the month of the meeting you sponsor.

To secure a corporate sponsorship, advertise in the Take-Off, or if you have any questions please contact Tara White @ [twhite@mlbc-aapl.org](mailto:twhite@mlbc-aapl.org). Please contact Sherry Gorman at [sgorman@eqt.com](mailto:sgorman@eqt.com) for dinner meeting sponsorships.



**"I make land management  
more manageable."**

That's the Percheron Experience.

*Kirsten, Project Manager  
Percheron Energy*



**NO ONE DELIVERS  
FULL-SERVICE UPSTREAM  
LAND MANAGEMENT SUPPORT  
LIKE PERCHERON.**

Percheron Energy gives owners and operators the expertise, technology and consistent, high-quality service needed to get the job done right, every time. Our dedicated professional landmen are all members of the American Association of Professional Landmen (AAPL). On every assignment they leverage streamlined processes and the latest technology to keep you on track.

**Percheron Energy**

- ▶ Title Curative
- ▶ Mineral Title Research
- ▶ Oil & Gas Lease Acquisition
- ▶ Due Diligence
- ▶ Land Administration Support
- ▶ Runsheet Preparation
- ▶ GIS Mapping and Analysis and more...

Visit us at  
2014 NAPE East  
Apr 9-11 | Pittsburgh, PA

TO LEARN MORE

call 888.232.3149 | visit [percheronllc.com](http://percheronllc.com)

© Copyright Percheron LLC, 2014

**AAPL**

1989 Horizontal JOA is ready for purchase!

*To order the JOA 1989H click here.*

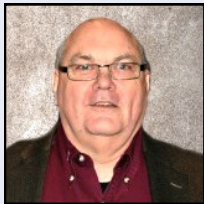
American Association of Professional Landmen

4100 Fossil Creek Blvd Fort Worth, TX 76137

[www.landman.org](http://www.landman.org)



## 2014 EXECUTIVE COMMITTEE

**President**

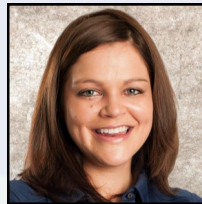
Charles E. Heilmann, CPL  
EQT Production  
[cheilmann@eqt.com](mailto:cheilmann@eqt.com)

**Director**

Rex Cecil Ray  
EQT Production  
[cray@eqt.com](mailto:cray@eqt.com)

**Vice President**

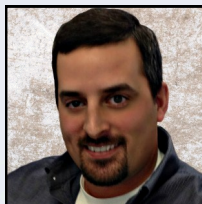
Cynthia L. Torbeck, CPL  
Hawkeye Research Inc.  
[ctorbeck@hawkeyeresearchinc.com](mailto:ctorbeck@hawkeyeresearchinc.com)

**Director**

Britney Crookshanks, RPL  
Northeast Natural Energy  
[bcrookshanks@nne-llc.com](mailto:bcrookshanks@nne-llc.com)

**Secretary**

Aaron R. Yost, CPL  
Percheron Energy  
[aaron.yost@percheronllc.com](mailto:aaron.yost@percheronllc.com)

**Director**

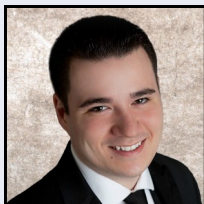
Jeremy Preston, RPL  
EQT Production  
[jpreston@eqt.com](mailto:jpreston@eqt.com)

**Treasurer**

John Kimbleton, CPL  
Access Midstream  
[john.kimbleton@accessmidstream.com](mailto:john.kimbleton@accessmidstream.com)

**President Emeritus**

Richard B. Robb  
Vantage Energy  
[richard.robbs@vantageenergy.com](mailto:richard.robbs@vantageenergy.com)

**Sergeant-At-Arms**

Anthony Farr, RPL  
Tioga Resources  
[afarr@tioga-resources.com](mailto:afarr@tioga-resources.com)

**National Director**

Mark A. Acree, CPL  
Noble Energy, Inc.  
[macree@nobleenergyinc.com](mailto:macree@nobleenergyinc.com)

[www.mlbc-aapl.org](http://www.mlbc-aapl.org)



### MLBC WEBSITE

If you experience any problems using the website or if you have any suggestions, please contact Jeremy Preston via e-mail at [JPreston@eqt.com](mailto:JPreston@eqt.com).



### JOB BANK

The direct link for MLBC Job Bank is [www.mlbcjobbank.com](http://www.mlbcjobbank.com). If you have any questions, please contact Jeremy Preston via e-mail at [JPreston@eqt.com](mailto:JPreston@eqt.com).



### PHOTO ALBUM

We would like to share our Photo Album with you to show you what MLBC has been doing throughout the year. The direct link for MLBC Photo Album is [www.mlbc-aapl.org/VPhoto.php](http://www.mlbc-aapl.org/VPhoto.php).

## 2013—2014 COMMITTEE CHAIRS

Awards	Bruce Turner	<a href="mailto:bruce.turner@steptoe-johnson.com">bruce.turner@steptoe-johnson.com</a>
Bylaws	Chris Elswick	<a href="mailto:chris.elswick@steptoe-johnson.com">chris.elswick@steptoe-johnson.com</a>
Certification	James E. Talkington, Jr., CPL/ESA	<a href="mailto:jeta@frontier.com">jeta@frontier.com</a>
Education	Christa Dotson	<a href="mailto:christa.dotson@percheronllc.com">christa.dotson@percheronllc.com</a>
Ethics	Doug Richards	<a href="mailto:honordjr@aol.com">honordjr@aol.com</a>
Fall Golf	Steve Carr, RPL	<a href="mailto:steve.carr@tsdudley.com">steve.carr@tsdudley.com</a>
Finance	Richard Robb	<a href="mailto:Richard.robb@vantageenergy.com">Richard.robb@vantageenergy.com</a>
Historian	Frederick J. Kent, CPL	<a href="mailto:KentFrederick@Hotmail.com">KentFrederick@Hotmail.com</a>
Marketing	Anthony Farr, RPL	<a href="mailto:afarr@tioga-resources.com">afarr@tioga-resources.com</a>
Membership	Jeremy D. Preston , RPL	<a href="mailto:jpreston@eqt.com">jpreston@eqt.com</a>
Directory	Crystal Murphy	<a href="mailto:cmurphy@tioga-resources.com">cmurphy@tioga-resources.com</a>
NAPE East	Aaron Yost	<a href="mailto:ayost@percheronllc.com">ayost@percheronllc.com</a>
Plate Program	Ben King, RPL	<a href="mailto:benjaminking@suddenlink.net">benjaminking@suddenlink.net</a>
Photography	Marlene Heilmann	<a href="mailto:marheilmann@yahoo.com">marheilmann@yahoo.com</a>
Spring Golf	Aaron Yost	<a href="mailto:ayost@percheronllc.com">ayost@percheronllc.com</a>
Sponsorships	Sherry B. Gorman	<a href="mailto:sgorman@eqt.com">sgorman@eqt.com</a>
Website /Job Bank	Jeremy D. Preston , RPL	<a href="mailto:jpreston@eqt.com">jpreston@eqt.com</a>

*THE MLBC WILL BE EXHIBITING AT THE NAPE EAST CONFERENCE*



  
**NAPE**  
EAST  
PITTSBURGH | SPRING

April 9- 11, 2014  
Pittsburgh, PA



---

# FIELD LAND PRACTICES

---



**Thursday-Friday  
February 27-28, 2014  
Holiday Inn Youngstown - South  
Boardman, OH**

[www.landman.org](http://www.landman.org)

facebook.com/AAPLAmericasLandmen  
Twitter: @AAPLlandman



## Brief Overview

The AAPL Field Land Practices seminar(formerly Introduction to Field Land Practices) is a two-day program designed for the six-month to five-year landman, and is well suited for both the field landman and the in-house landman wanting to learn more about field land practices. It can serve as a primer for those starting out in field landwork, as a refresher and general review for the more experienced landman, or as an opportunity for the company landman to learn more about field landwork. The material presented will build on the foundation acquired on-the-job and will solidify skills recently acquired. It is also suitable for those interested in learning some of the basics of landwork and what a landman does. A course workbook will be provided. An optional RPL exam is now offered on Day Two (details below).

**Instructor:** Curtis D. Horne & Craig Young

**Event:** Field Land Practices

**Hotel:** Holiday Inn, 7410 South Avenue, Boardman, OH 44512

**Date/time of event here:** February 27-28: 8:00am-4:45pm

**Cost - pre-registration SEMINAR ONLY:** \$250 for members, \$375 for non-members; after February 13th the price goes up \$50.

**Cost – Pre-registration SEMINAR & RPL EXAM:** \$300 for Active Members thru 2/13/13

**Cost – RPL EXAM ONLY (this does not include a review or study guide):** \$100 for Active Members thru 2/13/13. After 2/13, the cost goes up \$50

**Class Capacity:** 125

**Accreditation:** 13 CPL/RPL/RL credits including 2 ethics credits for the full 2 day seminar



## AGENDA

### Thursday, February 27<sup>th</sup>:

<b>7:30 AM</b>	<b>Registration &amp; Continental Breakfast</b>
<b>8:00</b>	<b>Welcoming Remarks and course overview</b>
<b>8:30</b>	<b>Real Property Law</b>
	<b>Legal Descriptions</b>
	<b>Contract Law</b>
	<b>Curtis D. Home, CPL &amp; Craig Young, CPL</b>
<b>Noon</b>	<b>Lunch (On Your Own)</b>
<b>1:00</b>	<b>Conveyancing</b>
	<b>Interest Calculations</b>
	<b>Oil &amp; Gas Lease</b>
	<b>AAPL &amp; Ethics</b>
<b>4:45</b>	<b>Adjourn</b>

### Friday, February 28<sup>th</sup>:

<b>7:30AM</b>	<b>Continental Breakfast</b>
<b>8:00</b>	<b>Running Title</b>
	<b>Negotiations and the Landman</b>
	<b>Document Preparation</b>
	<b>Lease Purchase Report Package</b>
	<b>Runsheets Preparation</b>
	<b>Curtis D. Home, CPL &amp; Craig Young, CPL</b>
<b>Noon</b>	<b>Lunch (On Your Own)</b>
<b>1:00</b>	<b>Title Opinions and Curative</b>
	<b>Ethics Discussion</b>
	<b>The Landman and the Industry</b>
	<b>Q&amp;A</b>
<b>4:30</b>	<b>Adjourn</b>

### Friday, February 28<sup>th</sup>: *(Optional RPL Exam)*

<b>8:45 AM</b>	<b>Exam Prep</b>
	<b>AAPL</b>
<b>9:00</b>	<b>Exam Begins</b>
<b>11:00</b>	<b>Exam Ends</b>

## Topics Covered

This is a basic but fast-paced, interactive course, designed to equip the beginner landman and others with the knowledge necessary for success. The course is NOT intended to qualify attendees to be a landman but will introduce them to the basic principles and practices of the profession.

**DAY ONE** covers details about the very basics of land work – real property and contract law, land descriptions, the basics of conveyancing, the oil and gas lease, basic interest calculations, and ethics.

**DAY TWO** of the seminar consists of discussion and examples of conducting courthouse record checks, preparing oil and gas documents (lease, draft, purchase report), conducting a title exams, submitting a lease package to a client, on-line resources for landmen, professional decorum, and ethical situations

### **DAY TWO – Optional RPL Exam from 8:45 a to 11:00 p**

- Must be an Active Member for 1 year. The workbook Petroleum Land Practices will be shipped to registrants in advance who are taking the exam with the review course.
- **\*Please note if you are signed up for the EXAM ONLY the review and workbook are not included**
- Verification is required to ensure eligibility to take the exam. Please reference our website, [www.landman.org](http://www.landman.org) under Certifications to make sure all minimum requirements are met before registering.
- **BRING TO CLASS:** study guide, a hand held calculator with extra batteries if required and writing utensils. AAPL will provide scratch paper. No iPhones, Ipads or smart phones are allowed for the calculator feature.

## Instructors



### **Instructor: Curtis D. Horne, CPL**

Curtis D. Horne, CPL, is Vice President, Business Development – Energy, for Percheron LLC, a nationwide land services firm, and is based in Houston, Texas. Curt began his career as an independent landman in 1981, and has experience in Texas, Oklahoma, Arkansas, Louisiana and Montana. A member of the American Association of Professional Landmen since 1997, Curt earned his Certified Professional Landman designation in 1999. He is Chairman of the 2013 AAPL Annual Meeting Committee, is a member of the Publications Committee, and is Past Chairman of the Ethics, Certification and Field Landman Committees. He served on the AAPL Executive Committee as Treasurer for 2007-2008. Curt was named recipient of the 2008 AAPL Education Award, the 2007 AAPL Best Member Communication Award, and the 2002 AAPL Field/Independent Landman Award. On the local level, Curt is a member of the North Houston Association of Professional Landmen, where he serves as President for 2012-2013, and the Houston Association of Professional Landmen, where he served as Treasurer for 2007-2008.

Curt is an instructor for the AAPL Certified Professional Landman Exam Review and the AAPL Introduction to Field Land Practices Seminar, presenting topics which include Real Property Law, Contract Law, Land Descriptions, The Oil & Gas Lease, Title Opinions and Curative, Conveyancing, Interest Calculations, Negotiations and Ethics. He has also spoken on a variety of topics for the Energy Land Institute, NGL Institute, Canadian APL, HAPL, NHAPL, ALTAPL, SAAPL, NADOA, HADOA, NALTA, ALTA and at The Association of Desk and Derricks Clubs National Convention.

Mr. Horne lives in the Houston suburb of Pearland with his wife Jamie and their daughter, age 15, and son, age 14. They are active parishioners at St. Helen Catholic Church, where Curt was the Chairman of the 2008 Parish Bazaar and Auction, and is an usher and Eucharistic minister. Curt enjoys cycling and running, and has successfully completed the BP MS150, the Hotter'n Hell Hundred, and the Houston Marathon.





## **Instructor: Craig Young, CPL**

A graduate of Texas Tech University, Craig Young, CPL, has been operating as an independent landman out of Abilene, Texas, for more than 35 years. Craig formed a partnership with W. Glen Shedd, CPL, in 1991 and has been operating as Young & Shedd since. Formerly he was a landman for Pennzoil Producing Company in Shreveport, Louisiana, covering parts of Louisiana, Arkansas and Texas and all of Alabama, Mississippi and Florida. He then covered the Gulf Coast area of Texas. Craig also formed his own corporation in 1980 to handle exploration and petroleum land management. Craig has been a Certified Professional Landman since December, 1981.

Craig served as President of the American Association of Professional Landmen, headquartered in Fort Worth, during 2003 and 2004. He has previously served as AAPL First Vice-president and as a regional director for the association. He has served as both Chairman and Assistant Chairman for the AAPL Certification Committee and was AAPL Second Vice-president in 2000-2001. He also served as Chairman of the Sub-nominating Committee for AAPL in 2005-2006. He is a member of the Permian Basin Landmen's Association, and has served as both a Director and President of the Abilene Association of Petroleum Landmen. He has also served on the Board of Directors of the West Central Texas Oil and Gas Association and Texas Alliance of Energy Producers and on the Advisory Board for the Petroleum Land Management Program at Texas Tech University. He has been a member of the NAPE Expo Advisory Board since 2003 and currently serves as Chairman of the Advisory Board of NAPE Expo, L.P. which is held in Houston twice a year.

## **Tuition Assistance**

**Tuition Assistance:** The AAPL Education Foundation has established a new tuition assistance program that will pay the registration fee for any AAPL member who desires to attend an AAPL operated educational event but cannot do so due to financial limitations. To receive assistance, an AAPL member must submit a written request for assistance along with the event registration form. The request must indicate the reason that assistance is needed, the years of AAPL membership (*minimum two years*), and list all other programs for which tuition assistance was approved (*maximum of two events per year*). The names of registrants requesting financial assistance will remain confidential.

Tuition assistance is available for all AAPL operated education programs except the annual meeting. This includes all AAPL Institutes, Seminars, Workshops, and Oil & Gas Land Reviews (*CPL/RPL*) and exam. Assistance for these programs is limited to two per year. Assistance is also available for all AAPL on-line programs with no limit to the programs watched. Home study programs are eligible for a reduced rate of \$25 per course with a limit of five courses per year.

## **Transfers and Cancellations**

All requests for transfers and cancellations must be made in writing and all must be made before **Thursday, February 13, 2014.**

Individuals may transfer their registration to another individual for this event at no additional charge. Transfers to another AAPL event may be made for \$25 if made prior to February 13, 2014. After that date, **no transfers will be accepted.**

Registrations may be cancelled for a refund, less a \$25 administration fee, if made prior to February 13, 2014. After that date, no refunds will be granted. Registrants not entitled to a refund will receive a copy of the written materials.

AAPL retains cancellation rights. In the unlikely event of cancellation, AAPL will attempt to notify all pre-registrants.

**THE DEADLINE FOR TRANSFERS AND CANCELLATIONS IS 5:00 p.m. on  
THURSDAY, FEBRUARY 13, 2014.**

**After February 13th, the registration fees go up \$50**

## **AAPL Contact**

**Dondria Roozee**

**Education Meeting Planner**

Phone: 817-847-7700

Email: [droozee@landman.org](mailto:droozee@landman.org)

Address: 4100 Fossil Creek Blvd

Fort Worth, TX 76137



**EVENT REGISTRATION**You can also register online at [www.landman.org](http://www.landman.org)

**Field Land  
Practices  
227FLP**

**Boardman, OH  
Feb 27-28, 2014**

Name: \_\_\_\_\_ AAPL # \_\_\_\_\_

Company: \_\_\_\_\_

Address: \_\_\_\_\_

City, ST ZIP: \_\_\_\_\_

Phone: \_\_\_\_\_ Fax: \_\_\_\_\_

E-mail: \_\_\_\_\_

**Registrations & Payment Received:****MAIL TO:****REMIT CHECK:**

**AAPL**  
P.O. Box 225395  
Dallas, TX 75222-5395

**Thru 2/13/14****After 2/13/14****Workshop Only**

AAPL Member	<input type="checkbox"/>	\$250	<input type="checkbox"/>	\$300
NonAAPL Member	<input type="checkbox"/>	\$375	<input type="checkbox"/>	\$425
PLM/ERM Student	<input type="checkbox"/>	\$0	<input type="checkbox"/>	\$50
Tuition Assistance	<input type="checkbox"/>	\$0	<input type="checkbox"/>	\$50

(Request Attached)

**REMIT CREDIT****CARD:**

**AAPL**  
4100 Fossil Creek  
Blvd.  
Fort Worth, TX 76137  
Fax: (817) 847-7704

**RPL Review/Exam****RPL Exam ONLY**

<input type="checkbox"/>	\$300	<input type="checkbox"/>	\$300
<input type="checkbox"/>	\$100	<input type="checkbox"/>	\$150

**ATTENTION:** If you are paying by check, please note that AAPL cannot process your registration until the check has cleared; this delays your registration process. AAPL recommends that you pay by credit card whenever possible to ensure a quick reservation and confirmation.

**CALL OR E-MAIL****QUESTIONS TO:**

**Dondria Roozee**  
(817) 847-7700

[droozee@landman.org](mailto:droozee@landman.org)

**Payment Information**

Credit Card #: \_\_\_\_\_

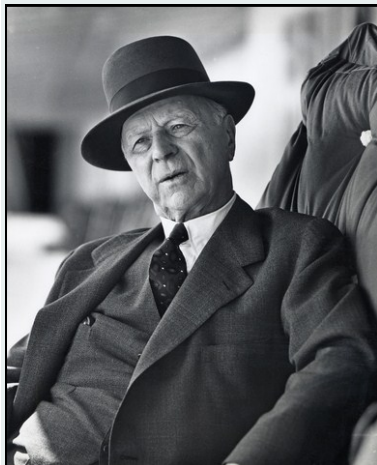
Exp. Date: \_\_\_\_\_ Card Security Code (CSC): \_\_\_\_\_

Name on Card: \_\_\_\_\_

Signature: \_\_\_\_\_

## MEMBERSHIP INFORMATION

*Michael Late Benedum*



**“The Great Wildcatter”**

The MLBC membership application is located on the website at [www.mlbc-aapl.org](http://www.mlbc-aapl.org). Please check your information on the website prior to submitting your renewal. The MLBC website has an updated version of the membership listing. Please use this resource if you can not find yours or others information in the directory. Please report any errors or omissions to Tara White at [twhite@mlbc-aapl.org](mailto:twhite@mlbc-aapl.org).

\* Notice of the application(s) of all potential Chapter member(s) shall be published in the next regularly scheduled monthly Chapter “Takeoff” newsletter. Active members shall have the opportunity during for a period of thirty (30) days following the first publication to object to the potential members’ application. Such objections to membership approval may be submitted to any member of the Executive Committee and shall be in writing. The Executive Committee shall take any such objection under counsel in the next regularly scheduled monthly Executive Committee meeting. A decision to accept or reject the membership application shall be determined by a majority vote at such meeting. The Executive Committee shall notify the applicant in writing of rejection.

Application for membership in the Chapter shall be subject to the approval by a majority vote of the Executive Committee at a regularly scheduled meeting, after the aforementioned thirty (30) day newsletter publication period, and shall require the signed approval by the acting President of the Executive Committee, as evidence of the Committee’s approval. Names of any and all newly approved members shall be read at the following regularly scheduled general meeting of the Chapter.

### Annual Membership Renewal

**Membership renewal time is upon us. Please remember to login, update your information and pay your membership dues for 2014.**

