



Michael Late Benedum Chapter

American Association of Professional Landmen

The Take-Off

June 2014

MLBC
P.O. Box 955
Bridgeport, WV 26330

PRESIDENTIAL ADDRESS

I will soon join the ranks of other President Emeritus' (better known as Past Presidents). Bing's definition of Emeritus is: "one retired from professional life but permitted to retain as an honorary title the rank of the last office held". Well I'm not retiring from professional life or the MLBC; I will stand in ready to assist the organization until I do become a true Emeritus, so I will be just a Past President and forever retain a place first in the food line.

We had a real election this year with some heavy campaign for President and Secretary. Please see the Secretary's report for results. I want to wish each new officer the best.

We had a good meeting in Zanesville, I saw some members I have not seen in quite a while. The venue was a little difficult to locate but the food was great. I want to thank our speaker John K. Keller, Esq with Vorys, Sater, Seyour & Pease.... John, Thank You.

We next meet in Wheeling, West Virginia at Ogelbay Resort for our Spring Charity Golf Outing. Aaron Yost reports great support for the WV Children's Hospital fund raiser but still we can do more. I want to encourage **every member** to take the "**Top Notch Land Service CHALLENGE**" and donate an equivalent of one day of your day-rate to the WVU Children's Hospital. Even if you feel you cannot afford to donate a full day – I challenge you to donate at some level even if it's only five dollars.

[I Challenge you to click here](#)

I hope to see you in Wheeling when we give away several awards and prizes, and introduce the New 2014-2015 Officers.

It has been a pleasure and honor to have served you as President this past year. Travel safely,

Charles E. "Chuck" Heilmann, CPL
2013-2014 President

INSIDE THIS ISSUE

Secretary's Report.....	2
Sponsors.....	3
New Members.....	4
Dinner Meeting Photos	5
Education Opportunities.....	6
Sponsorship Opportunities..	7
Executive Committee.....	8
Committee Chairs	9
Schedule of Events.....	9
Membership Information.....	10

Upcoming events

Spring Charity Golf Event Dinner
June 12, 2014
Oglebay Resort
Wheeling, WV

[Click Here to Register](#)

SECRETARY'S REPORT



The MLBC held an Executive Committee meeting on Thursday, May 8 at the Muskingham Convention Center in Zanesville, OH prior to the May dinner meeting. Topics discussed included membership, elections, education, charity golf events, chapter history, marketing, and the West Virginia MLBC license plates.

Membership

41 new members were approved, bringing the membership to 1,426 total members.

Education

Planning for the Appalachian Land Institute in October is underway and the committee is currently working to finalize a venue near Pittsburgh.

Charity Golf Events

The Spring event at Oglebay in June is currently sold out. The Fall event at Nemacolin in September is currently being planned.

Elections

The election ballot for the 2014-2015 slate of officers was posted on the website as well as e-mailed to the membership. Voting ended on May 31 and the new slate of officers will be inducted at the June dinner meeting following golf. The election results and the 2014-2015 slate of MLBC officers are as follows:

President

Anthony Farr

Vice President

Aaron Yost

Secretary

John Kimbleton

Treasurer

Jeremy Preston

Sergeant-At-Arms

Britney Crookshanks

Chapter History

Chapter Historian, Fred Kent is planning to interview veteran members and to document the evolution of the Chapter.

Marketing

The Marketing Committee has been delivering MLBC brochures to courthouses to continue driving membership.

West Virginia MLBC License Plates

Ben King reports many more license plates need purchased by our West Virginia members or member companies in order for the plate program to get off the ground.

Aaron R. Yost, CPL

2013-2014 MLBC Secretary

MLBC Corporate Sponsors

Platinum



Gold



Silver



Bronze



June 2014 Dinner Meeting Sponsors

Steptoe & Johnson

Tri State Acquisitions

Holland Services

Thank You For Your Support!

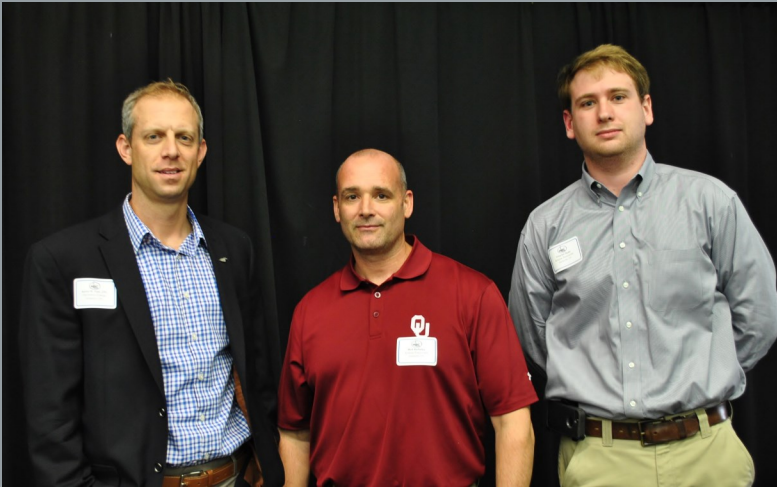
NEW MEMBERS– APRIL 2014

First Name	Last Name	Employer	Member Type
William	Klintworth		Associate
Barbara J.	Miller		Active
Christopher	Hall	Babst Calland PC	Associate
Carol	Herring	Carol J. Herring, LLC	Active
Matthew	Buckles	Chesapeake Energy	Active
J. Harrison	Frantz	Eclipse Resources	Active
Luke	Bates	Eclipse Resources	Active
Gary	Pownell	Eclipse Resources	Active
Chelsea	Grant	Exterra Resources	Associate
Gary	Monroe	Gary A. Monroe & Associates Petroleum	Active
Patrick	McQuiggan	Gemondo & McQuiggan, LLP	Active
Randall	Wehler	Gulfport Energy Corporation	Active
Ryan	Nicastro	Honor Resources	Active
Matthew	Lawrence	Honor Resources	Active
Edward	Walker	Honor Resources	Associate
John	Gipson	Honor Resources	Associate
Dorothy	Pfeiffer	Honor Resources	Associate
Patrick	Reeder	Honor Resources	Associate
Zakary	Skeen	Honor Resources	Associate
Josepah	Breiter	Honor Resources	Associate
Aaron	Faulk	Honor Resources	Associate
Kevin	Fike	Honor Resources	Active
Joe	Hodgin	Honor Resources	Active
Beverly	Knapp	Honor Resources	Active
William	Triplett	Honor Resources	Active
Julian	Powell	JLP Epic Industries LLC	Associate
Jennifer	McDonough	Noble Energy	Active
Adam "Lou"	Weilacher	Pennsylvania General Energy Co., L.L.C.	Active
Aaron	Rohlfing	Purple Land Management, LLC	Active
Melissa	Sharp	S & A Property Research, LLC.	Associate
Christopher	Six	Self Employed	Active
Nathan	Gruz	Stoll Keenon Ogden PLLC	Associate
Lawrence	Goodwin	Stoll Keenon Ogden PLLC	Associate
Kimly	Vu	Stoll Keenon Ogden PLLC	Associate
Aaron	Yonash	Stoll Keenon Ogden PLLC	Associate
Andrew	Vogeler	Stoll Keenon Ogden PLLC	Associate
Benjamin	Barger	SWEPI LP	Active
Robert F	Cobourne	Tri State Acquisitions	Associate
Jim	Kane	Tucker Arensberg	Active
Jeffrey	Junstrom	Tucker Arensberg, P.C.	Active



John Kimbleton reports the bank balance is \$219,087.99

MAY DINNER MEETING





CONTINUING EDUCATION OPPORTUNITIES

Negotiations Seminar-Pittsburgh, PA

Monday, June 16, 2014 (9:00 AM-3:00 PM)

5 CEU's towards RL/RPL/ CPL designations.

RPL & CPL EXAM ONLY- Morgantown, WV

Saturday, July 19, 2014 (7:15 AM-2:00 PM)

Applied Land Practices - Washington, PA

Monday, August 04, 2014 (8:00 AM-5:00 PM)

7 CPL/RPL/RL CEU's, includes 1 ethics credit.

Petroleum Engineering for Non-engineers – Pittsburgh, PA

August 26-28, 2014 (8:30 AM-4:30 PM)

2014 Appalachian Land Institute - Washington, PA

Thursday, October 02—Friday, October 03, 2014

Basics of Geographic Information System - Pittsburgh, PA

Tuesday, November 04, 2014 (9:00 AM-3:00 PM)

TO REGISTER FOR ANY OF THE LISTED COURSES PLEASE CLICK ON THE COURSE TITLES.

CORPORATE SPONSORSHIP LEVELS

Platinum \$5,000.00 per year

Benefits of Platinum Sponsor

- Logo on the corporate sponsor board at every meeting along with the meeting sponsor board.
- Logo on the back of every Takeoff and the bottom of every membership email.
- Receive three meeting/dinner passes for each meeting for one year.
- Receive one free Full Page advertising ad.
- Receive free Half Page ad in the takeoff per year.
- Logo on Golf Outing sponsorship boards.



Gold \$2,500.00 per year

Benefits of Gold Sponsor

- Logo on the corporate sponsor board at every meeting.
- Logo on the back of every Takeoff and the bottom of every membership email.
- Receive one free Half Page advertising ad in the Takeoff per year.
- Logo on Golf Outing sponsorship boards.



Silver \$1,500.00 per year

Benefits of Silver Sponsor

- Logo on the corporate sponsor board at six meetings.
- Logo on the back of every Takeoff and the bottom of every membership email.
- Receive one free Half Page advertising ad in the Takeoff per year.



Bronze \$500.00 per year

Benefits of Bronze Sponsor

- Logo on the corporate sponsor board at three meetings.
- Logo on the back of every Takeoff.



Advertising in The TakeOff

Full page ad \$500.00 per month

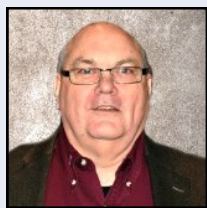
Half page ad \$250.00 per month

Dinner Meeting Sponsorship

Cost \$250.00 per meeting. Companies will receive advertising at the dinner meeting as well as your logo displayed on our website for the month of the meeting you sponsor.

To secure a corporate sponsorship, advertise in the Take-Off, or if you have any questions please contact Tara White @ twhite@mlbc-aapl.org. Please contact Sherry Gorman at sgorman@eqt.com for dinner meeting sponsorships.

2014 EXECUTIVE COMMITTEE

**President**

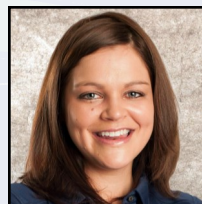
Charles E. Heilmann, CPL
EQT Production
cheilmann@eqt.com

**Director**

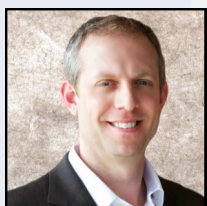
Rex Cecil Ray
EQT Production
cray@eqt.com

**Vice President**

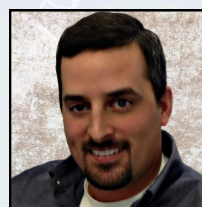
Cynthia L. Torbeck, CPL
Hawkeye Research Inc.
ctorbeck@hawkeyeresearchinc.com

**Director**

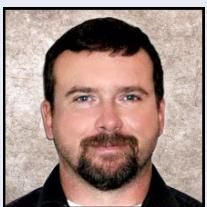
Britney Crookshanks, RPL
Northeast Natural Energy
bcrookshanks@nne-llc.com

**Secretary**

Aaron R. Yost, CPL
Percheron Energy
aaron.yost@percheronllc.com

**Director**

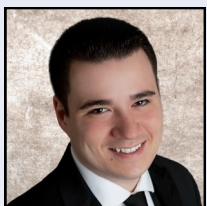
Jeremy Preston, RPL
EQT Production
jpreston@eqt.com

**Treasurer**

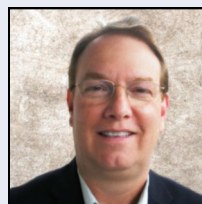
John Kimbleton, CPL
Access Midstream
john.kimbleton@accessmidstream.com

**President Emeritus**

Richard B. Robb
Vantage Energy
richard.robb@vantageenergy.com

**Sergeant-At-Arms**

Anthony Farr, RPL
Tioga Resources
afarr@tioga-resources.com

**National Director**

Mark A. Acree, CPL
Noble Energy, Inc.
macree@nobleenergyinc.com

**Executive Assistant**

Tara White
MLBC
twhite@mlbc-aapl.org

2013—2014 COMMITTEE CHAIRS

Awards	Bruce Turner	bruce.turner@steptoe-johnson.com
Bylaws	Chris Elswick	chris.elswick@steptoe-johnson.com
Certification	James E. Talkington, Jr., CPL/ESA	jeta@frontier.com
Education	Christa Dotson	cdotson@eqt.com
Ethics	Doug Richards	honordjr@aol.com
Fall Golf	Steve Carr, RPL	steve.carr@tsdudley.com
Finance	Richard Robb	Richard.robb@vantageenergy.com
Historian	Frederick J. Kent, CPL	KentFrederick@Hotmail.com
Marketing	Justin Wolford	jwolford224@yahoo.com
Membership	Jeremy D. Preston , RPL	jpreston@eqt.com
Directory	Crystal Murphy	cmurphy@tioga-resources.com
NAPE East	Aaron Yost	aaron.yost@percheronllc.com
Plate Program	Ben King, RPL	benjaminking@suddenlink.net
Photography	Marlene Heilmann	marheilmann@yahoo.com
Spring Golf	Aaron Yost	aaron.yost@percheronllc.com
Sponsorships	Sherry B. Gorman	sgorman@eqt.com
Website /Job Bank	Jeremy D. Preston , RPL	jpreston@eqt.com

MLBC SCHEDULE

<u>Date</u>	<u>Location</u>	<u>Speaker</u>	<u>Topic</u>
<i>June 12, 2014</i>	<i>Oglebay Resort Wheeling, WV</i>	<i>Spring Charity Golf Outing</i>	
<i>August 7, 2014</i>	<i>PNC Park Pittsburgh, PA</i>	<i>Pittsburgh Pirates Game</i>	
<i>September 19, 2014</i>	<i>Nemacolin Woodlands Resort Farmington, PA</i>	<i>Fall Charity Golf Outing</i>	
<i>October 2, 2014</i>	<i>The Meadows Racetrack & Casino Washington PA</i>	<i>Roger Soape, AAPL President</i>	<i>AAPL Update</i>
<i>November 13, 2014</i>	<i>Bridgeport Conference Center Bridgeport, WV</i>	<i>TBD</i>	<i>TBD</i>
<i>January 12, 2015</i>	<i>Hilton Garden Inn, Canonsburg, PA</i>	<i>Luncheon Meeting</i>	

MEMBERSHIP INFORMATION

Michael Late Benedum



“The Great Wildcatter”

The MLBC membership application is located on the website at www.mlbc-aapl.org. Please check your information on the website prior to submitting your renewal. The MLBC website has an updated version of the membership listing. Please use this resource if you can not find yours or others information in the directory. Please report any errors or omissions to Tara White at twhite@mlbc-aapl.org.

Notice of the application(s) of all potential Chapter members shall be published in the next regularly scheduled monthly Chapter “Takeoff” newsletter. Active members shall have the opportunity during for a period of thirty (30) days following the first publication to object to the potential members’ application. Such objections to membership approval may be submitted to any member of the Executive Committee and

shall be in writing. The Executive Committee shall take any such objection under counsel in the next regularly scheduled monthly Executive Committee meeting. A decision to accept or reject the membership application shall be determined by a majority vote at such meeting. The Executive Committee shall notify the applicant in writing of rejection.

Application for membership in the Chapter shall be subject to the approval by a majority vote of the Executive Committee at a regularly scheduled meeting, after the aforementioned thirty (30) day newsletter publication period, and shall require the signed approval by the acting President of the Executive Committee, as evidence of the Committee’s approval. Names of any and all newly approved members shall be read at the following regularly scheduled general meeting of the Chapter.



MLBC WEBSITE

If you experience any problems using the website or if you have any suggestions, please contact Jeremy Preston via e-mail at JPreston@eqt.com.



JOB BANK

The direct link for MLBC Job Bank is www.mlbcjobbank.com. If you have any questions, please contact Jeremy Preston via e-mail at JPreston@eqt.com.



PHOTO ALBUM

We would like to share our Photo Album with you to show you what MLBC has been doing throughout the year. The direct link for MLBC Photo Album is www.mlbc-aapl.org/VPhoto.php.