



# Michael Late Benedum Chapter

American Association of Professional Landmen

## The Take-Off

March 2014

MLBC  
P.O. Box 955  
Bridgeport, WV 26330

### PRESIDENTIAL ADDRESS

I want to apologize for missing the February meeting. As all of you, I have another job that takes priority over my volunteer responsibilities with the MLBC. I know the weather was horrible for those traveling from the south; but even with that I hear we had a good turnout for the seminar by Matt Vavro.

It is that time of year we start thinking about the leadership of our organization. Our Bylaws mandate I call for nominations for the officers of the MLBC. That is the President, Vice President, Secretary, Treasurer and Sergeant-at-Arms. The three Director positions are appointed by these elected Officials. Our incumbent Nominees are: for President, Cindy Torbeck; for Vice President, Aaron Yost; for Secretary, John Kimbleton; for Treasurer, Anthony Farr and for Sergeant-at-Arms, Britney Crookshanks.

I want to again encourage all Associate Members of the MLBC to join the AAPL. Remember only Active Members may hold office or serve as Committee Chairpersons and vote on matters that relate to the relationship between the Chapter and the National Organization.. (See the [MLBC By-Laws](#) Article IV) Check out the AAPL Webpage "[Why Join](#)" for more details.

There's an update about the Organizational Plates, see our Committee Chair, Ben King's article. All members of the MLBC, with vehicle registered in WV, are eligible to buy and renew this handsome plate. After the initial cost of \$75.00, this includes your first license fee for the first year; there is only an additional \$15 per year to renew.

See you in Morgantown, WV at the Waterfront Place Hotel on March 13, 2014. The MLBC has planned a half day seminar starting in the afternoon prior to the monthly dinner meeting. Speakers for the Seminar will be Tom Patrick, Esq. discussing Negotiation Techniques, Shawn Gruschecky will present Fundamentals of GIS and Melinda Walls, Esq. will speak to us on Managing Non-Technical Risks in Oil & Gas Operations. Our Dinner Meeting Speaker will be Russ Schetroma. His topic for the evening will be *Hydraulic Fracturing: Debunking the Bunk*.

Charles E. Heilmann, CPL  
2013-2014 President

### INSIDE THIS ISSUE

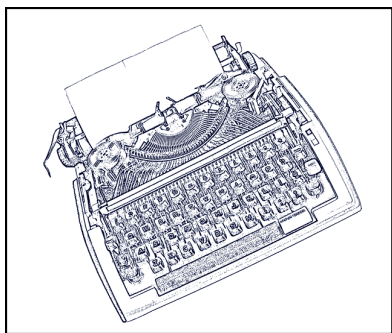
Secretary's Report .....	2
55th Anniversary .....	4
Directory Notification .....	5
Sponsors .....	6
News Flash .....	7
New Members .....	8
Dinner Meeting Photos .....	10
Meet- U in 5 Application .....	11
Education Opportunities.....	12
Sponsorship Opportunities.....	13
MLBC Schedule of Events.....	14
Executive Committee .....	15
Committee Chairs.....	16
Shale Article .....	17
Membership Information .....	23

### Upcoming events

*MLBC Half Day Seminar*  
March 13, 2014  
Waterfront Place Hotel  
Morgantown, WV  
[Click Here to Register](#)

*MLBC Dinner*  
March 13, 2014  
Waterfront Place Hotel  
Morgantown, WV  
[Click Here to Register](#)

## SECRETARY'S REPORT



The MLBC held an Executive Committee Meeting on Wednesday, February 12, 2014 at EQT's Bridgeport office. Topics of discussion included membership, AAPL awards nominations, marketing, West Virginia MLBC license plate program, and the upcoming meetings/educational events/social events.

### Membership

The Executive Committee approved 51 new members in February. In April, all current members will receive a membership directory as well as a membership card. Please note the deadline to renew your MLBC membership passed on February 15, 2014. If you missed the deadline you can still reinstate your membership by paying the reinstatement fee of \$25.00 plus annual dues of \$50.00. Please visit the MLBC website to renew. According to the Bylaws all members' dues are payable on January 1 of each year. Any member not having paid his/her dues by February 15 of the same year shall be removed from the Secretary's mailing list at the discretion of the Executive Committee. The reinstatement of any member dropped from the membership for nonpayment of dues shall be charged a reinstatement fee of fifty per cent (50%) of the dues amount in addition to the prescribed dues amount. **Any member whose dues have not been received and credited by April 1 shall be removed from the membership roll and are ineligible to vote.**

If you've changed jobs, have new contact information, etc. please be sure to update in the "Members Area" on the website.

### AAPL Awards Nominations

MLBC has made nominations for the annual AAPL Awards in the following categories:

- Landman of the Year
- Newsletter of the Year
- Best Member Communication
- Best Directors Report
- Largest Group Percentage of AAPL
- Special Award for Community Service

Michael Late Benedum Chapter  
American Association of Professional Landmen

[www.mlbc-aapl.org](http://www.mlbc-aapl.org)

### Marketing

The Marketing Committee will have a representative available at each upcoming dinner meeting to assist with joining the MLBC.

### West Virginia MLBC License Plate Program

Ben King reports the program is off to a slow start and is hopeful members will go to the website and sign up for the plate. The wording on the plate is being revised from "Professional Landman" to "Land Professional."

### Upcoming Events

An excellent slate of events is planned for the remainder of the year. Be sure to take advantage of the educational and networking opportunities being made to you as members.

Aaron Yost, CPL  
2013-2014 MLBC Secretary





# 55th Anniversary

**April 10, 2014**

**Easy Street**

**1 Oxford Centre - 301 Grant St.**

**Pittsburgh, PA 15219**

**5:30pm—9:00pm**

# Patrick Sweany





## 55TH ANNIVERSARY BASH



As many of you know, MLBC's volunteers on the NAPE East Committee have been hard at work planning a 55<sup>th</sup> Anniversary Bash in conjunction with the Expo in Pittsburgh. Well, the plans are set and it's time to make an announcement - a really big announcement. Negotiations have been made with Easy Street, in downtown Pittsburgh, to close its doors for the night to the general public. The doors will only be open for MLBC's social event. Easy Street is a top shelf bar/grille/restaurant located at the base of The Atrium in the 45 story tall One Oxford Center. Check it out here:

<http://www.easystreetpittsburgh.com/>

The doors will open at 5:30 and at approximately 7:00, national recording artist Patrick Sweany and his band will take the stage for an evening of top shelf rock, blues, soul, folk, and whatever else he decides to serve up. Lovers of live music probably already know who Patrick Sweany is and are both excited and *shocked* at the prospect of him playing MLBC's event. If you are part of the group that has never heard of him - you owe it to yourself to check him out:

<http://www.patricksweany.com/>

After four critically acclaimed albums - two of which were produced by longtime collaborator and grammy award winner Dan Auerbach of The Black Keys - Patrick is pretty much touring the entire United States, the UK, and has some dates in the Netherlands coming up in 2014. He is a regular at music festivals all over the country; in fact, he looks to be playing a festival in Austin, TX a couple days after our event! Currently, he is touring with the Tedeschi Trucks Band and Vanessa Carlton around the eastern US. His albums are a mix of americana, blues, soul, and rock, but his live shows are where he really shines. Alright, get ready. I'm going to try to describe it. Think The Black Keys meets Allman Brothers Band meets James Brown meets Jackson Browne (note the dual J. Brown(e) references!) and they all jam on a cover from an old Chicago blues legend like Hound Dog Taylor. It's pretty entertaining.

In case you aren't inclined to take my word for it, and I don't blame you, consider just a few industry reviews:

*"...soon-to-be-legendary..."* - Rolling Stone

*"...the man is a beast, to say the least. You know how you have your favorite musicians, and then they have their favorite musicians? Well, Sweany is one of them."* - Paste Magazine

*"...a hard-nosed and robust paean to **Ray Charles, Lightnin' Hopkins, and Eddie Hinton.** That type of company is as brazen as it comes. And much like his blues heroes, Sweany's swagger on this album adds up to a gritty and unheralded wrecking-ball."* - Hybrid Magazine

The MLBC is extremely fortunate and proud to be able to set up this social event. If you enjoy good music and good drinks with your good friends in the MLBC, then you do not want to miss this event! Once the event registration is open, make sure to reserve your spot - it will sell out FAST!

-Jeremy White





**Advertising  
Opportunities**



## 2014 Membership Directory Advertising

Company Name: \_\_\_\_\_  
 Contact Person: \_\_\_\_\_  
 Email Address: \_\_\_\_\_  
 Billing Address: \_\_\_\_\_  
 Telephone: \_\_\_\_\_ Fax: \_\_\_\_\_  
 Authorized By: \_\_\_\_\_ Date: \_\_\_\_\_

Place my ad on Half / Full Page. The ad size is:

☐

Full Page (Color) \$300  
4 1/2" w X 7 1/4" h

☐

Half Page (Color) \$225  
4 1/2" w X 3 1/2" h

☐

Full Page (Black/White) \$200  
4 1/2" w X 7 1/4" h

☐

Half Page (Black/White) \$125  
4 1/2" w X 3 1/2" h

**\*\* Camera Ready Artwork is Preferred \*\***

Total Cost for 2014 MLBC Membership Directory Advertisment(s) \$ \_\_\_\_\_

**Deadline for Advertisement is March 15, 2014**

*Please return completed form to:*

Crystal Murphy, Tioga Resources, LLC, 917 West Main Street, Suite 202, Bridgeport, WV 26330  
 Telephone: 304-848-2206 Fax: 304-848-2212 Email: [CMurphy@Tioga-Resources.com](mailto:CMurphy@Tioga-Resources.com)

The Michael Late Benedum Chapter of AAPL will be publishing its updated Membership Directory in April 2014. The member information in the directory will be pulled directly from the MLBC website; please ensure your information is up to date and accurate. If you need help accessing your MLBC account, please contact Tara White at [twhite@mlbc-aapl.org](mailto:twhite@mlbc-aapl.org).

If you, or any affiliate(s), are interested in placing an ad in the 2014 Directory, the MLBC is offering full and half page advertisements. Please see the following form for details. For more information, please contact one of the members below.

Crystal Murphy, Tioga Resources, LLC  
 304-848-2206 Ext 102  
[CMurphy@Tioga-Resources.com](mailto:CMurphy@Tioga-Resources.com)

Steve Johnson, PDC Energy  
 304-842-3597 Ext 6558  
[Steve.johnson@pdce.com](mailto:Steve.johnson@pdce.com)

## MLBC Corporate Sponsors

### Platinum



### Gold



### Silver



### Bronze



## March 2014 Dinner Meeting Sponsors

***Bryson Kuba, LP***

***Complete Title Solutions***

***Smith Land Survey***

***Steptoe & Johnson PLLC***

***Percheron Energy***

***Upshur Agency, Inc.***

***Thank You For Your Support!***





PROFESSIONAL LANDMAN LICENSE PLATE

# NEWS FLASH

## Check out the New “Land Professional” plate

*A change from Professional Landman to... “Land Professional” has been made to encompass all Land Professionals working in our industry. Now any WV member wanting to show their support for our chapter can feel good about putting one of these plates on your vehicle. Don’t let this opportunity slip away. Do it today. Ben King, RPL*



For only \$15.00 more each year you can have a Special WV organizational plate on the back of your vehicle. West Virginia will be the first state in the US to have an official state issued license plate representing the Oil & Gas industry. We must collect 250 applicants to fulfill the first order requirements of the WVDMMV. Time is running out and we only have a 120 days left. We may not ever get this opportunity again. The first 250 members will be given a number between 0001-0250 on a first come first served basis. There is no limit to how many plates an individual or company may purchase. You just need to be a MLBC member. All plates will expire on July 1 after the first year of issue and the initial cost is just \$70.00 for the first year. All you need to do is follow the link on the home page of the MLBC website to print an application and pay online or by check. If your vehicle info changes during the sign up period, there will be time to make changes before the plates are produced. Why own a standard plate when you can have one of these. We are applying to the states of Ohio & Pennsylvania for the same plate. Your participation is needed and greatly appreciated.



**\$30 v. \$45**



## NEW MEMBERS– FEBRUARY 2014

First Name	Last Name	Employer	Member Type
Laura	Lynde		Active
Debbie	Montesano	Appalachian Resources D.G., LLC	Associate
Joseph	Lockwood	Babst, Calland, Clements and Zomnir, P.C.	Associate
Margaret	Harrigan	Blue Sapphire Land Agents	Active
Daniel	Atkinson	Bryson Kuba L. P	Associate
Arthur	Zwierlein	Chesapeake Energy	Active
Randy	Wheeler	Cimmaron Field Services, Inc.	Active
Jessica	Steely	Cinco Energy	Active
Stephanie	Yocius	EQT Corporation	Associate
Matt	Pasquinelli	EQT Corporation	Active
George	Heflin	EQT Production Company	Active
Billy	Hayes	Exterra Land Group	Active
Steve	Bruton	Gulfport Energy Corporation	Active
Kara	Bonnell	Herbert, Rowland & Grubic, Inc.	Active
Louis	Otto	Holland Acquisitions	Active
Jacqueline	Guyach	Holland Services	Active
Sue	Weiss	Holland Services	Active
Eric	Lynde	Holland Services	Associate
Sean	Parsons	Honor Resources Company	Active
Robin	Cross	Honor Resources Company	Associate
Christina	Coleman	Independent Contractor	Active
Lester	King	JD Smith LLC	Associate
Jolynn	Smith	JD Smith LLC	Associate
Jessica	Fulmer	Justin White Properties	Active
David	Fox	Law Offices of Cara C. Davis	Associate
Emily	Mostella	MidWest Land Services	Active
Stuart	Six	PDC Mountaineer	Active
Harry	Heinbaugh	Percheron Energy	Active
Mark	Mudrick	Percheron Energy LLC	Active
John	Sabo	Percheron LLC	Active
Verle	Haines	Range Resources	Active
Nikki	Atkison	Range Resources	Active
Julie	Rinehart	Rinehart Research, LLC	Associate
Brian	Watson	S&A Property Research	Active
Ron	Bewley	Self	Active
Cally	Marciano	Self employed	Active
Brandon	Steele	Shale Energy Partners, Inc.	Active
Michele	Frederick	Sherry Lynne Abstracting	Associate
Sherry	Fabrizi	Sherry Lynne Abstracting, LLC	Active
Louis	Enderle	Steptoe & Johnson PLLC	Associate
Natalie	Thomas	Steptoe & Johnson, PLLC	Associate
William	Means	Terra Services	Active
Steven	Green	Texhoma Land Consultants	Active
Kathy	Green	Texhoma Land Consultants	Associate
Chad	Stumph	Texhoma Land Consultants	Active
Shawn	Vaillancourt	Texhoma Land Consultants I	Active
Jasmine	Allison	Timberbrook Resources, LLC	Active
Jason	Adams	Tioga	Associate
Sarah	Varner	Top Notch Land Services	Associate
Bradley	Lowe	Utica Shale Mineral Partners	Active
Matthew	Simpson	Wild & Wonderful Land Services	Active





Save the date

MLBC  
Annual Spring  
Charity  
Golf Event

benefiting  
WVU Children's Hospital  
Oglebay Resort  
- Palmer & Jones Courses

 WVU Healthcare  
Children's Hospital



June 12, 2014



## FEBRUARY EVENT RECAP

CANNONSBURG, PA







Pennsylvania  
Historical & Museum  
Commission

## MEET-U In 5

Presented by Drake Well Museum, Friends of Drake Well, Inc., and Oil Creek State Park  
Saturday, May 17, 2014 at 9:00AM

**Description:** This unique 5 mile trail race will begin at the Drake Well Museum in Titusville, PA and run on the scenic Gerard Hiking Trail through Oil Creek State Park before returning to the Drake Well Museum. Wear bright orange if you have it, as it is turkey season in NWPA!

**Awards:** Top 3 overall males and females will receive unique, artisan awards that all are relevant to the area's history, age group awards in 10 year increments, and finisher awards to all participants.

**Fee:** \$30 by May 1, 2014. \$35 after May 1, 2014. Registrations accepted up until race morning. Each participant will receive a technical t-shirt and a unique finishers award. Post race refreshments will be provided to all participants.

**Packet Pickup/Late Registration:** Saturday, May 17 from 7:30-8:45AM at Drake Well Museum.

**BENEFITS:** The proceeds from this race will benefit the MEET-U (Mobile Energy Education Training Unit). The MEET-U operates under the Friends of Drake Well and is a non-profit energy education program that works to educate the public about all varieties of energy.

**MAKE CHECKS PAYABLE TO Friends of Drake Well and send to MEET-U Trail Run, 205 Museum Lane, Titusville, PA 16354. Email Katie Peterson at [meetunit@gmail.com](mailto:meetunit@gmail.com) with any questions.**

Name: \_\_\_\_\_

Address: \_\_\_\_\_

City: \_\_\_\_\_ State: \_\_\_\_\_ Zip: \_\_\_\_\_

Phone: \_\_\_\_\_ Email: \_\_\_\_\_

Age (must be age 13 by 5/17/14): \_\_\_\_\_ Gender: Male or Female

Shirt size (GENDER SPECIFIC): S M L XL XXL

**By indicating your acceptance, you understand, agree, warrant, and covenant as follows:**

WAIVER: In consideration of the acceptance of this entry in said 5 mile trail race, May 17, 2014, at Drake Well Museum and Oil Creek State Park, we, the undersigned participant and (if participant is under 18 years of age) parent or guardian, intending to be legally bound, do hereby for ourselves, our heirs, executors, and administrators, waive, release, and forever discharge any and all rights or claims for damages which we, or either of us, may have or which hereafter accrue to us, or either of us, against any and all persons, organizations, and legal entities affiliated with such race, and more particularly, Friends of Drake Well, Drake Well Museum, PHMC, Oil Creek State Park, DCNR, Commonwealth of Pennsylvania, Miles of Smiles timing service, together with their representative officers, agents, representatives, employees, successors, assign and/or sponsors, for any and all damages which may be sustained or suffered by us in connection with or entry in, and/or arising out of our travel to, participation in, and returning from said race. I/we hereby agree to release to the race promoter full and exclusive rights to record my performance on film, videotape, or still photography for use without compensation. I/we understand that this is an arduous athletic event and hereby certify that I/we are/am have trained and properly conditioned to participate. In case of a weather related cancellation, I understand that my entry fee will be forfeited but I will still be entitled to my race bag and finisher award.

Signed \_\_\_\_\_

Date \_\_\_\_\_

Signed (If participant is under 18 years of age) \_\_\_\_\_

Date \_\_\_\_\_



## CONTINUING EDUCATION OPPORTUNITIES

### **Due Diligence Seminar- Williamsport, PA**

Friday, March 07, 2014 (8:30 AM-3:00 PM)  
*5 CEU's towards RL, RPL and CPL designations.*

### **Hot Issue In The Shale Play– Charleston, WV**

March 27, 2014  
*4 RPL & CPL Credits available*

### **WI/NRI Workshop - Williamsport, PA**

Friday, March 28, 2014 (9:00 AM-3:30 PM)  
*6 CPL/RPL/RL credits.*

### **Field Landman Seminar - Washington, PA**

Tuesday, April 08, 2014 (5:00 PM-9:00 PM)  
*2 CPL/RPL/RL credits, 1 as ethics credit.*

### **WI/NRI Workshop - Zanesville, OH**

Thursday, May 01, 2014 (8:00 AM-3:30 PM)  
*6 CPL/RPL/RL credits.*

### **Development Issues in Major Shale Plays - What's on the Horizon?- Pittsburgh, PA**

May 1-2, 2014  
*12.5 Credits Available.*

### **WI/NRI Workshop - Washington, PA**

Friday, May 02, 2014 (8:00 AM-3:30 PM)  
*6 CPL/RPL/RL credits*

### **Field Land Practices - Bridgeport, WV with Optional RPL Exam**

Monday, May 19, 2014 - Tuesday, May 20, 2014  
*13 CPL/RPL/RL credits including 2 ethics*

### **JOA Workshop -Mars, PA**

Thursday, May 29, 2014 - Friday, May 30, 2014  
*14 CPL/RPL/RL credits*

### **Oil and Gas Land Review, CPL/RPL Exam - Pittsburgh, PA**

Wednesday, June 04, 2014 - Saturday, June 07, 2014  
*18 General credits which includes 1 Ethics*

### **Negotiations Seminar-Pittsburgh, PA**

Monday, June 16, 2014 (9:00 AM-3:00 PM)  
*5 CEU's towards RL/RPL/ CPL designations.*

### **RPL & CPL EXAM ONLY- Morgantown, WV**

Saturday, July 19, 2014 (7:15 AM-2:00 PM)

### **Applied Land Practices - Washington, PA**

Monday, August 04, 2014 (8:00 AM-5:00 PM)  
*7 CPL/RPL/RL CEU's, includes 1 ethics credit.*

### **Basics of Geographic Information System - Pittsburgh, PA**

Tuesday, November 04, 2014 (9:00 AM-3:00 PM)



## CORPORATE SPONSORSHIP LEVELS

### **Platinum \$5,000.00 per year**

#### Benefits of Platinum Sponsor

- Logo on the corporate sponsor board at every meeting along with the meeting sponsor board.
- Logo on the back of every Takeoff and the bottom of every membership email.
- Receive three meeting/dinner passes for each meeting for one year.
- Receive one free Full Page advertising ad.
- Receive free Half Page ad in the takeoff per year.
- Logo on Golf Outing sponsorship boards.



### **Gold \$2,500.00 per year**

#### Benefits of Gold Sponsor

- Logo on the corporate sponsor board at every meeting.
- Logo on the back of every Takeoff and the bottom of every membership email.
- Receive one free Half Page advertising ad in the Takeoff per year.
- Logo on Golf Outing sponsorship boards.



### **Silver \$1,500.00 per year**

#### Benefits of Silver Sponsor

- Logo on the corporate sponsor board at six meetings.
- Logo on the back of every Takeoff and the bottom of every membership email.
- Receive one free Half Page advertising ad in the Takeoff per year.



### **Bronze \$500.00 per year**

#### Benefits of Bronze Sponsor

- Logo on the corporate sponsor board at three meetings.
- Logo on the back of every Takeoff.



### **Advertising in The TakeOff**

Full page ad \$500.00 per month

Half page ad \$250.00 per month

### **Dinner Meeting Sponsorship**

Cost \$250.00 per meeting. Companies will receive advertising at the dinner meeting as well as your logo displayed on our website for the month of the meeting you sponsor.

To secure a corporate sponsorship, advertise in the Take-Off, or if you have any questions please contact Tara White @ [twhite@mlbc-aapl.org](mailto:twhite@mlbc-aapl.org). Please contact Sherry Gorman at [sgorman@eqt.com](mailto:sgorman@eqt.com) for dinner meeting sponsorships.

## MLBC SCHEDULE

<u>Date</u>	<u>Location</u>	<u>Speaker</u>	<u>Topic</u>
March 13, 2014	Waterfront Place Hotel Morgantown, WV	Half Day Seminar Dinner: Russ Schetroma	Hydraulic Fracturing: Debunking the Bunk
April 10, 2014	Easy Street Pittsburgh, PA	National Recording Artist Patrick Sweany	
May 8, 2014	Muskingum Convention Center Zanesville, OH	TBD	TBD
June 12, 2014	Oglebay Resort Wheeling, WV	Spring Charity Golf Outing	
August 7, 2014	PNC Park Pittsburgh, PA	Pittsburgh Pirates Game	
September 9, 2014	Nemacolin Woodlands Resort	Fall Charity Golf Outing	



**"I make land management more manageable."**

That's the Percheron Experience.

Kirsten, Project Manager  
Percheron Energy



**NO ONE DELIVERS  
FULL-SERVICE UPSTREAM  
LAND MANAGEMENT SUPPORT  
LIKE PERCHERON.**

Percheron Energy gives owners and operators the expertise, technology and consistent, high-quality service needed to get the job done right, every time. Our dedicated professional landmen are all members of the American Association of Professional Landmen (AAPL). On every assignment they leverage streamlined processes and the latest technology to keep you on track.

### Percheron Energy

- Title Curative
- Mineral Title Research
- Oil & Gas Lease Acquisition
- Due Diligence
- Land Administration Support
- Runsheet Preparation
- GIS Mapping and Analysis and more...

Visit us at  
2014 NAPE East  
Apr 9-11 | Pittsburgh, PA

TO LEARN MORE

call 888.232.3149 | visit [percheronllc.com](http://percheronllc.com)

© Copyright Percheron LLC, 2014

## 2014 EXECUTIVE COMMITTEE

**President**

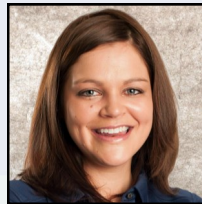
Charles E. Heilmann, CPL  
EQT Production  
[cheilmann@eqt.com](mailto:cheilmann@eqt.com)

**Director**

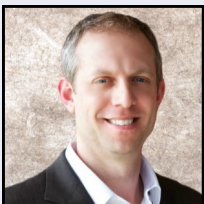
Rex Cecil Ray  
EQT Production  
[cray@eqt.com](mailto:cray@eqt.com)

**Vice President**

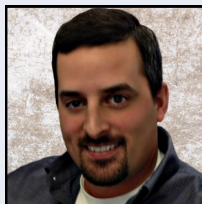
Cynthia L. Torbeck, CPL  
Hawkeye Research Inc.  
[ctorbeck@hawkeyeresearchinc.com](mailto:ctorbeck@hawkeyeresearchinc.com)

**Director**

Britney Crookshanks, RPL  
Northeast Natural Energy  
[bcrookshanks@nne-llc.com](mailto:bcrookshanks@nne-llc.com)

**Secretary**

Aaron R. Yost, CPL  
Percheron Energy  
[aaron.yost@percheronllc.com](mailto:aaron.yost@percheronllc.com)

**Director**

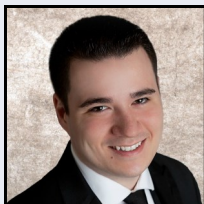
Jeremy Preston, RPL  
EQT Production  
[jpreston@eqt.com](mailto:jpreston@eqt.com)

**Treasurer**

John Kimbleton, CPL  
Access Midstream  
[john.kimbleton@accessmidstream.com](mailto:john.kimbleton@accessmidstream.com)

**President Emeritus**

Richard B. Robb  
Vantage Energy  
[richard.robbs@vantageenergy.com](mailto:richard.robbs@vantageenergy.com)

**Sergeant-At-Arms**

Anthony Farr, RPL  
Tioga Resources  
[afarr@tioga-resources.com](mailto:afarr@tioga-resources.com)

**National Director**

Mark A. Acree, CPL  
Noble Energy, Inc.  
[macree@nobleenergyinc.com](mailto:macree@nobleenergyinc.com)

[www.mlbc-aapl.org](http://www.mlbc-aapl.org)



### MLBC WEBSITE

If you experience any problems using the website or if you have any suggestions, please contact Jeremy Preston via e-mail at [JPreston@eqt.com](mailto:JPreston@eqt.com).



### JOB BANK

The direct link for MLBC Job Bank is [www.mlbcjobbank.com](http://www.mlbcjobbank.com). If you have any questions, please contact Jeremy Preston via e-mail at [JPreston@eqt.com](mailto:JPreston@eqt.com).



### PHOTO ALBUM

We would like to share our Photo Album with you to show you what MLBC has been doing throughout the year. The direct link for MLBC Photo Album is [www.mlbc-aapl.org/VPhoto.php](http://www.mlbc-aapl.org/VPhoto.php).



## 2013—2014 COMMITTEE CHAIRS

Awards	Bruce Turner	<a href="mailto:bruce.turner@steptoe-johnson.com">bruce.turner@steptoe-johnson.com</a>
Bylaws	Chris Elswick	<a href="mailto:chris.elswick@steptoe-johnson.com">chris.elswick@steptoe-johnson.com</a>
Certification	James E. Talkington, Jr., CPL/ESA	<a href="mailto:jeta@frontier.com">jeta@frontier.com</a>
Education	Christa Dotson	<a href="mailto:christa.dotson@percheronllc.com">christa.dotson@percheronllc.com</a>
Ethics	Doug Richards	<a href="mailto:honordjr@aol.com">honordjr@aol.com</a>
Fall Golf	Steve Carr, RPL	<a href="mailto:steve.carr@tsdudley.com">steve.carr@tsdudley.com</a>
Finance	Richard Robb	<a href="mailto:Richard.robb@vantageenergy.com">Richard.robb@vantageenergy.com</a>
Historian	Frederick J. Kent, CPL	<a href="mailto:KentFrederick@Hotmail.com">KentFrederick@Hotmail.com</a>
Marketing	Anthony Farr, RPL	<a href="mailto:afarr@tioga-resources.com">afarr@tioga-resources.com</a>
Membership	Jeremy D. Preston , RPL	<a href="mailto:jpreston@eqt.com">jpreston@eqt.com</a>
Directory	Crystal Murphy	<a href="mailto:cmurphy@tioga-resources.com">cmurphy@tioga-resources.com</a>
NAPE East	Aaron Yost	<a href="mailto:ayost@percheronllc.com">ayost@percheronllc.com</a>
Plate Program	Ben King, RPL	<a href="mailto:benjaminking@suddenlink.net">benjaminking@suddenlink.net</a>
Photography	Marlene Heilmann	<a href="mailto:marheilmann@yahoo.com">marheilmann@yahoo.com</a>
Spring Golf	Aaron Yost	<a href="mailto:ayost@percheronllc.com">ayost@percheronllc.com</a>
Sponsorships	Sherry B. Gorman	<a href="mailto:sgorman@eqt.com">sgorman@eqt.com</a>
Website /Job Bank	Jeremy D. Preston , RPL	<a href="mailto:jpreston@eqt.com">jpreston@eqt.com</a>

***THE MLBC WILL BE EXHIBITING AT THE NAPE EAST CONFERENCE  
BOOTH 217***



  
**NAPE**  
EAST  
PITTSBURGH | SPRING

April 9- 11, 2014  
Pittsburgh, PA



**ROCKY MOUNTAIN MINERAL LAW  
FOUNDATION**

www.rmmlf.org

co-sponsored by

**Energy & Mineral Law  
Foundation**

**EMLF**

**American Association of Professional Landmen**

**AAPL**  
AMERICA'S LANDMEN

**Special Institute on**

# **Development Issues in Major Shale Plays**

## **– What's on the Horizon?**

*Discounts for both  
EMLF & AAPL members*

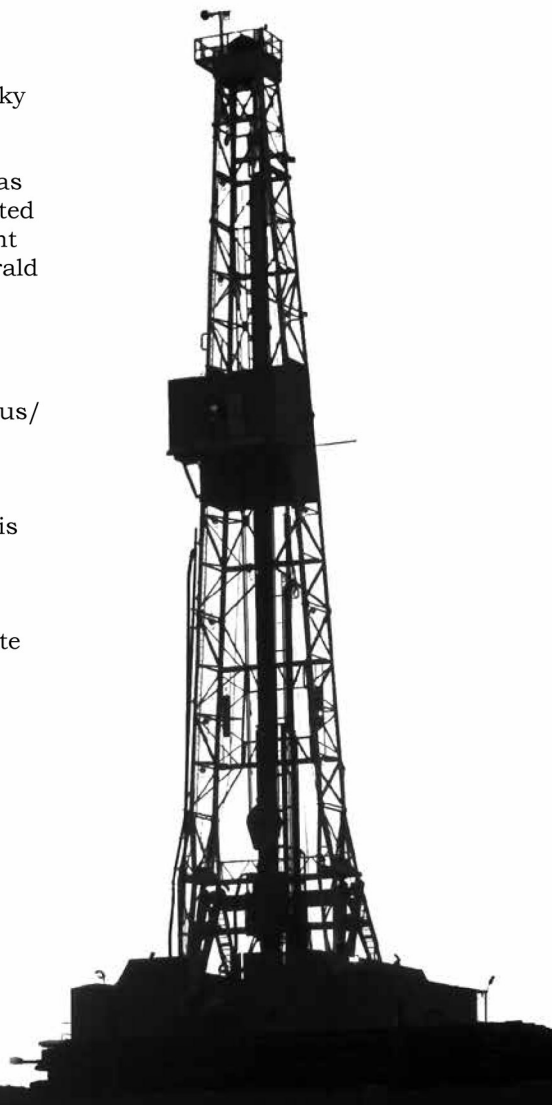
**Sheraton Station Square Hotel  
Pittsburgh, Pennsylvania  
May 1–2, 2014**

In 2010, when the dramatic growth in shale development was taking off, the Rocky Mountain Mineral Law Foundation, in conjunction with the Energy & Mineral Law Foundation and AAPL, presented its first Special Institute on Development Issues in the Major Shale Plays. Attracting over 450 participants, the institute was enormously popular and well received. Now, almost four years later, the anticipated growth of shale gas plays is a reality. Unprecedented exploration and development efforts are proceeding across the major shale basins of the United States and herald a new era in which natural gas may be exported from these shores and beyond North America. This Special Institute will explore in depth the legal issues and trends arising from the maturation of the shale gas plays.

Focusing on four basins across the country that typify these trends—the Marcellus/Utica, Niobrara, Eagle Ford/Barnett, and Bakken—this institute will provide a comprehensive analysis of the legal issues presently facing shale gas operators. It will address legal and regulatory developments relating to horizontal drilling, hydraulic fracturing, water supply and disposal, and air quality. Special emphasis will be given to lease maintenance and title, JOAs, pooling and unitization, and gathering and transportation.

There have been fundamental changes to the playing field since our 2010 institute on shale gas development, and the regulations and legal issues are evolving at a rapid pace. Please join us in Pittsburgh for this timely, insightful, and practical institute of interest to anyone involved in shale gas development throughout the United States.

*Written course materials and audio recordings  
are available in various formats if you are unable  
to attend. See inside for details.*





# Development Issues in Major Shale Plays

Thursday, May 1, 2014

7:30 – 8:30 am - **Registration**  
**Sheraton Station Square Hotel**

8:30 – 8:45 am

## **Introductions and Opening Remarks**

SHARON O. FLANERY, President, Energy & Mineral Law Foundation; Member, Steptoe & Johnson PLLC, Charleston, West Virginia

ROBERT B. KEITER, President, Rocky Mountain Mineral Law Foundation; Professor of Law, University of Utah S.J. Quinney College of Law, Salt Lake City, Utah

BRUCE M. KRAMER, Program Co-Chair; Keystone, Colorado; Of Counsel, McGinnis Lochridge & Kilgore LLP, Houston, Texas

MARY A. VIVIANO, Program Co-Chair; General Counsel, Vantage Energy LLC, Englewood, Colorado

8:45 – 9:45 am

## **Overview of Major U.S. Shale Plays: Marcellus/Utica, Niobrara, Eagle Ford/Barnett, and Bakken**

The pace of activity in the Marcellus/Utica, Niobrara, Eagle Ford/Barnett, and Bakken Plays has been tremendous. What have the shale plays' reserves, trends, and statistics meant, and what will they mean, to the U.S. reserves picture?

BARRY OSBORNE, Vice-President, Range Resources Corporation, Canonsburg, Pennsylvania & Fort Worth, Texas

9:45 – 10:00 am - **Coffee Break**

10:00 – 11:00 am

## **Laws Governing Technical Innovations in Shale Plays: Horizontal Drilling, Hydraulic Fracturing, and Water Use Innovations—Driving the Boom and Generating Litigation**

This presentation will address changes to state and federal laws on drilling horizontal wells, EPA's hydraulic fracturing study, draft BLM rules on hydraulic fracturing, and pending litigation challenging the states' right to regulate hydraulic fracturing over local objection.

JOHN C. MARTIN, Partner, Crowell & Moring LLP, Washington, D.C.

11:00 am – Noon

## **Lease Maintenance and Title Issues Across the Shale Basins – Part 1**

Old leases – new stories: What can court decisions teach us about navigating potential development conflicts in shale plays, including dual purpose leases, competition from storage and coal interests, trespass, condemnation, continuous production, and other lease maintenance issues?

Moderator: BRUCE KRAMER, Keystone, Colorado; Of Counsel, McGinnis Lochridge & Kilgore LLP, Houston, Texas

Panelists:

Marcellus/Utica: NICOLLE R. SNYDER BAGNELL, Partner, Reed Smith LLP, Pittsburgh, Pennsylvania;

JOHN K. KELLER, Partner, Vorys, Sater, Seymour & Pease LLP, Columbus, Ohio

Noon – 1:30 pm - **Lunch (on your own)**

1:30 – 3:00 pm

## **Lease Maintenance and Title Issues Across the Shale Basins – Part 2**

Moderator: MARY VIVIANO, Program Co-Chair; General Counsel, Vantage Energy LLC, Englewood, Colorado

Panelists:

Eagle Ford/Barnett: CRAIG L. STAHL, Partner, Andrews Kurth LLP, The Woodlands, Texas

Bakken: BLAINE T. JOHNSON, Partner, Crowley Fleck PLLP, Bismarck, North Dakota

Niobrara: C. ELAINE CARLETON, Partner, Carleton Gotlin Law PC, Denver, Colorado

3:00 – 3:15 pm - **Coffee Break**

3:15 – 4:15 pm

## **Dormant Mineral Acts—Possible Game Changers?**

One size does not fit all! Legislative approaches to the merging of severed surface and mineral estates differ significantly. How may these laws affect your drilling title, and what decisions of state and federal courts are most relevant?

PATRICK H. MARTIN, Professor Emeritus of Law, Louisiana State University, Baton Rouge, Louisiana

4:15 – 5:15 pm

## **Recent JOA Modifications Affecting Horizontal Drilling in Shale Plays: The AAPL 1989 Model Form—Horizontal Addendum and Beyond**

A survey of the recently published modifications to the AAPL Model Form, this presentation will include a discussion of the Addendum and additional changes being contemplated for the Model Form, including those drawn from recent court decisions.

WORTH CARLIN, Vice-President Land, Vantage Energy LLC, Englewood, Colorado

JEFF WEEMS, Partner, Porter Hedges LLP, Houston, Texas

5:15 – 6:15 pm - **Hosted Reception**



# Development Issues in Major Shale Plays

Friday, May 2, 2014

8:30 – 10:30 am

## **Water Schemes Across the Shale Plays**

Water supply and disposal are critical issues in shale development. These presentations will address state regulatory schemes and the lack thereof, obtaining rights to fresh water, produced water disposal, permits, fresh water impoundment, water recycling, and recent litigation.

Marcellus/Utica: R. TIMOTHY WESTON, Partner, K&L Gates LLP, Harrisburg, Pennsylvania

Eagle Ford/Barnett: RUSSELL JOHNSON, Partner, McGinnis Lochridge & Kilgore LLP, Austin, Texas

Bakken: CRAIG C. SMITH, Partner, Crowley Fleck PLLP, Bismarck, North Dakota

Niobrara: ZACH C. MILLER, Partner, Davis Graham & Stubbs LLP, Denver, Colorado

10:30 – 10:45 am - **Coffee Break**

10:45 – 11:45 am

## **Hot Off the Presses: A Look at Groundbreaking New Air Quality Rules Addressing Fugitive Emissions, Greenhouse Gases, and Flaring from Oil and Gas**

In February, Colorado likely will have adopted the most aggressive air quality standards for oil and natural gas production in the nation. These rules, in large measure, resulted from a compromise struck by select industry and environmental stakeholders, and were endorsed by the Governor. What are the key provisions of the rules, including Leak Detection and Repair, and how do they relate to federal Quad O NSPS requirements; what are the air quality goals and will they be achieved; and what do these rules mean for operators in other shale plays?

JOHN R. JACUS, Partner, Davis Graham & Stubbs LLP, Denver, Colorado

ERIC WAECKERLIN, Associate, Davis Graham & Stubbs LLP, Denver, Colorado

11:45 am – 1:30 pm - **Lunch (on your own)**

1:30 – 2:30 pm

## **Pooling and Unitization Methods Across Shale Basins (or Lack Thereof) – Part 1**

This presentation will provide a survey of applicable state regulatory schemes and recent court decisions; spacing rules; setbacks; pooling and unitization schemes by state; or lack thereof (e.g., Texas). Can operators afford to drill “free” wells or carry co-tenants where there is no force pooling? What are the issues in urban landscapes? What are the concerns when crossing water bodies?

Moderator: BRUCE KRAMER, Program Co-Chair; Keystone, Colorado; Of Counsel, McGinnis Lochridge & Kilgore LLP, Houston, Texas

Panelists:

Marcellus/Utica: BENJAMIN M. SULLIVAN, Associate General Counsel, Energy Corporation of America, Charleston, West Virginia

Niobrara: JAMIE L. JOST, Managing Shareholder, Jost & Shelton Energy Group, PC, Denver, Colorado

2:30 – 2:45 pm - **Coffee Break**

2:45 – 3:45 pm

## **Pooling and Unitization Methods Across Shale Basins (or Lack Thereof) – Part 2**

Moderator: W. JONATHAN AIREY, Partner, Vorys, Sater, Seymour & Pease LLP, Columbus, Ohio

Panelists:

Eagle Ford/Barnett: JOHN HICKS, Partner, Scott, Douglass & McConnico, L.L.P., Austin, Texas

Bakken: AMY L. DE KOK, Shareholder, Fredrikson & Byron, P.A., Bismarck, North Dakota

3:45 – 4:45 pm

## **Gathering and Other Transportation Issues Facing Shale Operators**

Pipeline to Rail: What issues are involved in getting oil and natural gas out of the shale basin and to market? This presentation will discuss the differing schemes in the Utica/Marcellus (dealing with processing and NGLs), Eagle Ford/Barnett (contracting with oil pipelines), Bakken (transport by railcar), and Niobrara (natural gas pipeline issues).

ANNE D. WEBER, Partner, Weber Law Firm, LLC, Denver, Colorado

4:45 – 5:00 pm - **Closing Remarks and Adjournment**

## **60<sup>th</sup> Annual Rocky Mountain Mineral Law Institute**

July 17–19, 2014 in Vail, Colorado

*Come for the education.  
Bring your family for the location.*



# ORDER FORM



**Rocky Mountain Mineral Law Foundation**  
9191 Sheridan Blvd., Suite 203  
Westminster, CO 80031 USA  
(303) 321-8100 / Fax (303) 321-7657

Office Use:  
Shipped \_\_\_\_\_  
Picked Up \_\_\_\_\_  
Inv # \_\_\_\_\_

Name \_\_\_\_\_  
Employer \_\_\_\_\_  
Street Address (no P.O. boxes) \_\_\_\_\_  
City \_\_\_\_\_ State/Prov \_\_\_\_\_ Zip/Postal Code \_\_\_\_\_  
Country \_\_\_\_\_  
Telephone (\_\_\_\_) \_\_\_\_\_ Fax (\_\_\_\_) \_\_\_\_\_  
Email \_\_\_\_\_ Date \_\_\_\_\_  
Purchase Order No. \_\_\_\_\_ Tax Exempt No., If Applicable \_\_\_\_\_

*Course materials and audio recordings for Shale Plays will be available within 4 weeks after the program*

Title/Description		Qty.	Unit Price		Total
			Non-Member	RMMLF Member	
<b>DEVELOPMENT ISSUES IN MAJOR SHALE PLAYS</b>					
Looseleaf Manual only (SP2M)			\$195	\$155	\$
Digital Manual only (no shipping/handling charges) (SP2D)			\$195	\$155	\$
Audio recording (SP2A)	Specify audio format: <input type="checkbox"/> Downloadable <input type="checkbox"/> Audio CD		\$325	\$260	\$
Package (Looseleaf Manual & Audio) – save 10% (SP2MAP)			\$455	\$360	\$
Package (Digital Manual & Audio) – save 10% (SP2DAP)			\$455	\$360	\$
<b>OTHER PUBLICATIONS</b>					
					\$
					\$
Colorado Residents Add Sales Tax (see Colorado Sales Tax Chart)					
Handling Charge (waived for digital materials only) Outside U.S. and Other Services (see Shipping Information) <input type="checkbox"/> <b>Federal Express Overnight</b>					+ \$11.00 per order + \$
Bill my FedEx # _____					
<b>TOTAL</b>					<b>\$</b>

Colorado Sales Tax Chart	Shipping Information
City-Westminster, County-Jeffco, RTD and State .....8.35%	<b>All orders must add \$11 per order for handling charges.</b>
RTD and State .....4%	<b>Domestic:</b> Sent at no additional charge by FedEx Ground.
State of Colorado .....2.9%	<b>Canadian:</b> Must add \$30 per item.
	<b>International:</b> Must add \$65 per item.
	<b>FedEx Overnight:</b> Please provide your FedEx number.

## PAYMENT METHOD (Orders will not be filled until payment is received)

☐ Check drawn on a U.S. bank in U.S. Dollars (Payable to **Rocky Mountain Mineral Law Foundation**)  
☐ VISA    ☐ MasterCard    ☐ American Express  
 Credit Card # \_\_\_\_\_ Name on Card \_\_\_\_\_  
 Exp. Date (month/year) \_\_\_\_\_ Signature \_\_\_\_\_  
☐ Electronic Funds Transfer: Contact the Foundation at [info@rmmlf.org](mailto:info@rmmlf.org)



# PROGRAM COMMITTEE

BRUCE M. KRAMER, Program Co-Chair; Keystone, Colorado;  
Of Counsel, McGinnis Lochridge & Kilgore LLP, Houston, Texas

MARY A. VIVIANO, Program Co-Chair; General Counsel, Vantage  
Energy LLC, Englewood, Colorado

W. JONATHAN AIREY, Partner, Vorys, Sater, Seymour & Pease LLP,  
Columbus, Ohio

AMY DE KOK, Shareholder, Fredrikson & Byron, P.A.,  
Bismarck, North Dakota

KAREN J. GREENWELL, Partner, Wyatt Tarrant & Combs LLP,  
Lexington, Kentucky

JAMIE L. JOST, Managing Shareholder, Jost & Shelton Energy  
Group, PC, Denver, Colorado

NICOLLE R. SNYDER BAGNELL, Partner, Reed Smith LLP,  
Pittsburgh, Pennsylvania

## Development Issues in Major Shale Plays



### MAIL or FAX to:

**Rocky Mountain**

**Mineral Law Foundation**

9191 Sheridan Blvd., Ste. 203

Westminster, CO 80031 USA

Tel: (303) 321-8100

Fax: (303) 321-7657

### Questions:

info@rmmlf.org

**For membership  
information, contact  
the Foundation**

Office Use Only

SP2 \_\_\_\_\_

# \_\_\_\_\_

INIT \_\_\_\_\_

REFDT \_\_\_\_\_

CK# \_\_\_\_\_

AMT \_\_\_\_\_

INIT \_\_\_\_\_

Please type or print legibly

Name \_\_\_\_\_

Badge Name (if different from above) \_\_\_\_\_

Employer \_\_\_\_\_

Employer Address \_\_\_\_\_

City/State/Zip \_\_\_\_\_

Phone (\_\_\_\_) \_\_\_\_\_ Fax (\_\_\_\_) \_\_\_\_\_

Attendee Email \_\_\_\_\_

(required for confirmations, advance registration list, and program updates)

**Please check all that apply:** ☐ Attorney ☐ Landman ☐ CPA ☐ Management

☐ Consultant ☐ Other (please specify): \_\_\_\_\_

**CLE credit** requested for the following states: \_\_\_\_\_

**Other credit** requested from: \_\_\_\_\_

**Conference Materials** will be provided electronically  
to all attendees about 2 weeks before the course.

☐ Check here to receive hard copy materials  
at the course (\$65 extra fee).

**REGISTER ONLINE  
at [www.rmmlf.org](http://www.rmmlf.org)**

### Please pay in U.S. Dollars

**Registrations Received  
thru 4/11/14 after 4/11/14**

Non-Member Registration Fee	<input type="checkbox"/> \$785	<input type="checkbox"/> \$885
RMMLF Member	<input type="checkbox"/> \$675	<input type="checkbox"/> \$775
EMLF Member	<input type="checkbox"/> \$675	<input type="checkbox"/> \$775
AAPL Member	<input type="checkbox"/> \$675	<input type="checkbox"/> \$775
RMMLF Member Law School (Full-Time Faculty)	<input type="checkbox"/> \$295	<input type="checkbox"/> \$395
RMMLF Senior Member (Retired)	<input type="checkbox"/> \$295	<input type="checkbox"/> \$395
Government Agency / Non-Profit Organization (submit PO# if required)	<input type="checkbox"/> \$525	<input type="checkbox"/> \$625
Student—Full-Time, proof of status required	<input type="checkbox"/> \$35	<input type="checkbox"/> \$75

### PAYMENT INFORMATION - PREPAYMENT REQUIRED

☐ Check drawn on a U.S. bank in U.S. Dollars (Payable to RMMLF)

☐ VISA ☐ MasterCard ☐ American Express

Credit Card # \_\_\_\_\_ Exp. Date \_\_\_\_\_

Name on Card \_\_\_\_\_

Signature \_\_\_\_\_

☐ Electronic Funds Transfer: Contact the Foundation at [info@rmmlf.org](mailto:info@rmmlf.org)

# DEVELOPMENT ISSUES IN MAJOR SHALE PLAYS

## Rocky Mountain Mineral Law Foundation

9191 Sheridan Blvd., Suite 203  
Westminster, CO 80031 USA  
(303) 321-8100 / Fax (303) 321-7657

Non-Profit Org.  
U.S. POSTAGE  
PAID  
Boulder, Colorado  
Permit No. 273

## GENERAL INFORMATION

**Room Reservations:** The Sheraton Station Square, 300 W. Station Sq. Dr., Pittsburgh, PA 15219, has blocked discounted rooms for this course until April 7 at \$169/night (\$199/night Club). A limited number of government rate rooms are also available. Ask for special rates for Rocky Mountain Mineral Law Foundation registrants. For reservations, contact the Sheraton at:

- Toll Free 800-325-3535
- Direct 412-261-2000
- Online <http://tinyurl.com/rockym82>

Trouble making room reservations? Contact us at [info@rmmlf.org](mailto:info@rmmlf.org)

**Car Rental:** Hertz is offering special discounts by referencing Meeting CV#03NJ0009 and Rocky Mountain Mineral Law Foundation. Make reservations at <http://tinyurl.com/hertz2014> or call 800-654-2240 (U.S.); 800-263-0600 (Canada); or 405-749-4434 (Int'l).

**Registration Fees:** Include course materials, refreshments, and hosted functions as listed in this brochure. These fees do not include hotel costs or transportation. Registrations will be accepted only when accompanied by a check, money order, government purchase order or training form, credit card information, or wiring information. No registrations can be processed without payment.

**Recording:** Audio and video recording of this course are not permitted without the express authorization of the Foundation.

**Special Needs:** If you have special needs addressed by the ADA, please notify us at least two weeks before the program.

**Registration Cancellations:** Refunds, less a \$50 administrative fee, will be given for cancellations received by 3:00pm on Friday, April 11, 2014. No refunds will be given thereafter, although substitution of attendees may be made by contacting the Foundation. Cancellations must be made by email to [info@rmmlf.org](mailto:info@rmmlf.org). Registrants not entitled to a refund will receive a link to the written materials. For questions on refunds, complaints, and/or program cancellations, please contact our office at 303-321-8100.

**CLE Credit:** Foundation conferences are typically accredited by all mandatory CLE states, the AAPL, NADOA and NALTA, and other professional organizations. Attorneys from certain states may be required to pay an additional fee. This course consists of approximately 12.5 hours of continuing education. You must let us know at least 30 days in advance of the conference the states or organizations for which you will need credit (see registration form). The Foundation is a State Bar of California MCLE-approved provider.

**CPE Credit:** The Rocky Mountain Mineral Law Foundation is registered with the National Association of State Boards of Accountancy (NASBA) as a sponsor of continuing professional education on the National Registry of CPE Sponsors. State boards of accountancy have final authority on the acceptance of individual courses for CPE credit. Complaints regarding registered sponsors may be addressed to the National Registry of CPE Sponsors through its website: [www.learningmarket.org](http://www.learningmarket.org). There are no prerequisites and no advance preparation is required to attend this course. The delivery method is Group-Live, and up to 15 CPE credits are available. The program level is "overview."



## MEMBERSHIP INFORMATION

**Michael Late Benedum**



**“The Great Wildcatter”**

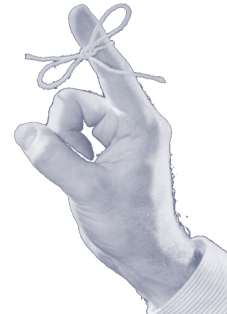
The MLBC membership application is located on the website at [www.mlbc-aapl.org](http://www.mlbc-aapl.org). Please check your information on the website prior to submitting your renewal. The MLBC website has an updated version of the membership listing. Please use this resource if you can not find yours or others information in the directory. Please report any errors or omissions to Tara White at [twhite@mlbc-aapl.org](mailto:twhite@mlbc-aapl.org).

\* Notice of the application(s) of all potential Chapter member(s) shall be published in the next regularly scheduled monthly Chapter “Takeoff” newsletter. Active members shall have the opportunity during for a period of thirty (30) days following the first publication to object to the potential members’ application. Such objections to membership approval may be submitted to any member of the Executive Committee and shall be in writing. The Executive Committee shall take any such objection under counsel in the next regularly scheduled monthly Executive Committee meeting. A decision to accept or reject the membership application shall be determined by a majority vote at such meeting. The Executive Committee shall notify the applicant in writing of rejection.

Application for membership in the Chapter shall be subject to the approval by a majority vote of the Executive Committee at a regularly scheduled meeting, after the aforementioned thirty (30) day newsletter publication period, and shall require the signed approval by the acting President of the Executive Committee, as evidence of the Committee’s approval. Names of any and all newly approved members shall be read at the following regularly scheduled general meeting of the Chapter.

### Annual Membership Renewal

**Membership renewal time is upon us.  
Please remember to login, update your  
information and pay your membership dues for  
2014.**



**TREASURER**

**John Kimbleton reports the bank balance  
is \$157,066.43.**