

THE WILDCATTER
MICHAEL LATE BENEDUM CHAPTER

AMERICAN ASSOCIATION OF PROFESSIONAL LANDMEN

LOCAL ASSOCIATION OF THE YEAR!



*Members of the MLBC pose with AAPL President, Nancy McCaskell, after receiving the Local Association of the Year Award.
Read more about the Annual Meeting and the award winners on Page 8.*

INSIDE THE ISSUE:
AWARDS DINNER & AAPL ANNUAL MEETING



INSIDE THE **AUGUST ISSUE**

- 3** LETTER FROM THE PRESIDENT
- 5** CORPORATE SPONSORS
- 6** 2025 SPONSORSHIP LEVELS
- 8** ANNUAL MEETING RECAP
- 10** AAPL DIRECTOR'S REPORT
- 13** AAPL UPDATES
- 15** MEMBER SPOTLIGHT: JIM KANE
- 16** AWARDS DINNER RECAP
- 18** SUMMER SOCIAL RECAP
- 20** FALL CHARITY GOLF OUTING
- 22** THE BASIN BRIEF
- 27** FALL CLAY SHOOT
- 29** UPCOMING EVENTS
- 30** EXECUTIVE COMMITTEE
- 31** COMMITTEE CHAIRS
- 32** MEMBERSHIP REPORT
- 33** MEMBERSHIP INFO

LETTER FROM THE PRESIDENT

MLBC PRESIDENT, KEVIN PIERSON



I am honored and excited to address you all as we embark on another promising year for the MLBC. Before we get too far ahead, I want to take a moment to express profound gratitude to past president John Catsonis, and the many other folks who've previously led the MLBC. Their vision, commitment, and hard work built a strong foundation for the MLBC, setting us up for continued success.

Around the Basin: Looking Ahead.

The future of energy in the Appalachian Basin continues to look bright. The role of land professionals has never been more crucial. Though, it's important to understand a few of the dynamics in play.

Keep Pace: Ongoing Development.

The region's diverse energy landscape presents unique challenges and opportunities, requiring land professionals with a broad understanding and adaptable skills. The energy landscape is constantly changing, and our professional development must keep pace. I've seen more technology advances over the last three years than the preceding fifteen years with no signs of slowing down. We have more tools in our chest than ever before to optimize our profession. The MLBC offers many educational events throughout the year presented by expert industry leaders. This year will be no exception with many exciting speakers and topics planned. The educational events are an excellent opportunity to learn and broaden these skills while connecting with other members, whether in person or virtually.

Endurance and Power: What's New and What's Next?

The ongoing technological advancements and robust development from the abundant Marcellus and Utica Shale formations continue to reshape the U.S. and global energy landscape. However, this does not come without issue. The takeaway constraints have severely bottlenecked the region over the last decade. The pipeline constraints remain an ongoing challenge but have improved recently with new major pipelines coming online last year, like the Mountain Valley Pipeline (MVP). The MVP is a 303-mile natural gas pipeline extending from Northern West Virginia to Virginia, connecting with the Transco pipeline, a critical energy infrastructure delivering natural gas to multiple regions of the country. Additionally, expansion prospects look to extend the region's takeaway capacity to the southeast and even the Gulf of America (I said it). The growth of LNG exports will further commercialize natural gas markets to downstream consumers abroad. Land Professionals have and will continue to play an important role on these projects both upstream and mid-stream, each presenting their own unique challenges.

Evolving regional consumer demands are also actively shaping the Appalachian energy market. Regional data centers are increasingly becoming a significant consumer of natural gas. The redevelopment of the former Homer City power plant in Indiana County, PA into the Nation's largest natural-gas powered data center campus brings much excitement, following their announcement last month. This is not the first major data center announcement and will not be the last.

The renewable energy sources like wind and solar alongside innovative projects like methane capture have crucial needs for land professionals. Additionally, the expansion of utility gas pipelines requires versatile land experience to negotiate agreements while educating landowners about the potential for condemnation. For instance, the Hope Gas Morgantown Connector Project is 30-mile natural gas pipeline project from Wadestown, WV to Morgantown, WV and estimated to cost appx. \$177.4 million. This is expected to go online later this year to meet increased utility gas demand in the Morgantown area.

Continued

LETTER FROM THE PRESIDENT

MLBC PRESIDENT, KEVIN PIERSON



Growing Roots.

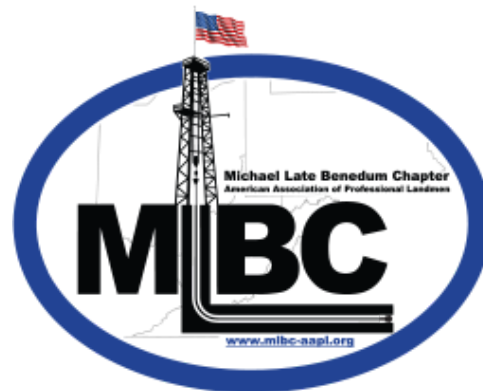
Our region still produces significant coal and conventional oil and gas, maintaining those vital roots. Land professionals play a specialized role to negotiate agreements, modifications, acquisitions and divestiture, title abstracting, and many other land related disciplines necessary for these development activities. The Pennsylvania Mining Complex located in southwest Pennsylvania is the largest underground coal mining complex in North America producing appx. 28.5 million tons of coal annually. The clean coal is primarily transported by railway using a dual-batch loadout onto railcars capable of handling 9,000 clean tons per hour. I've witnessed this myself and its absolutely mind boggling to observe the sheer volume and precision of the operation. Earlier this year, Core Natural Resources was formed through the merger of Consol Energy Inc. and Arch Resources Inc., creating a combined company valued at over \$5 billion. The predecessor to Consol Energy (Consol Coal Company) was founded 161 years ago (1864) with history as rich as their sprawling operations.

We Need You.

The Appalachian Basin remains a vital and dynamic energy hub with plentiful and critical needs for experienced land professionals. As the region continues to evolve, so does the need for land professionals able to adapt to the specific needs of the company, project, and our organization. If you have any desire to get further involved with the MLBC, I'll be the first to say that we need you. We have plentiful opportunities to serve our community and organization as we look to expand nearly all our committees. The MLBC thrives on member involvement further binding our professional relationships whether it's actively serving on a committee or making it out to a few of the events in your neck of the woods.

As your new President, I look forward to what we will accomplish working with all of you to keep the organization relevant, active, and vibrant. I hope to see you at an event sometime soon and would love to hear your story.

2025 MLBC CORPORATE SPONSORS



DIAMOND



EMERALD



PLATINUM



GOLD



SILVER



For more information or to purchase a Corporate Sponsor package or advertise in the The Wildcatter, please contact Abby Veigel at abbyveigel@mlbc-aapl.org.



2025 CORPORATE SPONSORSHIP LEVELS

The 2025 Corporate Sponsorship tiers are designed to support both the MLBC organization and the MLBC Foundation. Fifty percent of your contribution will support the MLBC organization, with the remaining fifty percent supporting the MLBC Foundation. By contributing, you're helping to advance energy professionals in our region, strengthen the communities where we work, and support the charities we proudly stand behind. Join us and our mission to support land professionals in our region and make a meaningful, lasting impact in our community.

For more information or to purchase a Corporate Sponsor package or advertise in the The Wildcatter, please contact Abby Veigel at abbyveigel@mlbc-aapl.org.

DIAMOND \$10,000

- \$4,000 Foundation Credit (may be redeemed for event tickets or sponsorship)
- 4 passes to each MLBC educational & social event
- Logo included in every Wildcatter edition & membership email
- Logo linked on MLBC website
- Logo displayed at all events (virtually or in person)
- 4 full page ads in The Wildcatter per year
- 2 half page ads in The Wildcatter per year

EMERALD \$7,500

- \$3,000 Foundation Credit (may be redeemed for event tickets or sponsorship)
- 4 passes to each MLBC educational & social event
- Logo included in every Wildcatter edition & membership email
- Logo linked on MLBC website
- Logo displayed at all events (virtually or in person)
- 3 full page ads in The Wildcatter per year
- 2 half page ads in The Wildcatter per year

PLATINUM \$5,000

- \$2,000 Foundation Credit (may be redeemed for event tickets or sponsorship)
- 4 passes to each MLBC educational & social event
- Logo included in every Wildcatter edition & membership email
- Logo linked on MLBC website
- Logo displayed at all events (virtually or in person)
- 2 full page ads in The Wildcatter per year
- 1 half page ad in The Wildcatter per year

GOLD \$2,500

- \$1,000 Foundation Credit (may be redeemed for event tickets or sponsorship)
- 2 passes to each MLBC educational & social event
- Logo included in every Wildcatter edition & membership email
- Logo linked on MLBC website
- Logo displayed at all events (virtually or in person)
- 1 half page ad in The Wildcatter per year

SILVER \$1,500

- \$500 Foundation Credit (may be redeemed for event tickets or sponsorship)
- Logo included in every Wildcatter edition & membership email
- Logo linked on MLBC website
- Logo displayed at all events (virtually or in person)



A WHOLLY OWNED SUBSIDIARY OF STEPTOE & JOHNSON PLLC

Experienced Analysts.
Diverse Projects.
Comprehensive
Land Administration
Solutions.

[!\[\]\(c3d993ca47bfe2a953c700506ce31fa0_img.jpg\) LEARN MORE ABOUT OUR LAND ADMIN CAPABILITIES](#)

COLORADO | KENTUCKY | OHIO | OKLAHOMA | PENNSYLVANIA | TEXAS | WEST VIRGINIA

400 White Oaks Blvd., Bridgeport, WV 26330

THIS IS AN ADVERTISEMENT



ANNUAL MEETING

KANSAS CITY | JUNE 18-20, 2025





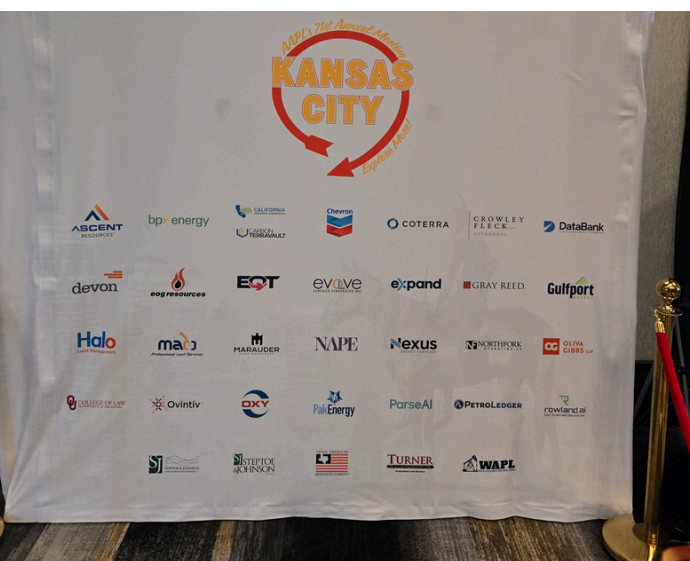
AAPL ANNUAL AWARD WINNERS



JOHN CATSONIS ACCEPTS THE AAPL BEST MEMBER COMMUNICATION AWARD FROM AAPL PRESIDENT, NANCY MCCASKELL



NANCY MCCASKELL, AAPL PRESIDENT, PRESENTS TINA THOMAS WITH THE AAPL ACCREDITED PROGRAM DIRECTOR OF THE YEAR AWARD



JOHN CATSONIS, JEREMY WHITE AND DANIEL COOPER ACCEPT THE LOCAL ASSOCIATION OF THE YEAR AWARD FROM AAPL PRESIDENT, NANCY MCCASKELL

AAPL DIRECTOR'S REPORT

Submitted by: Jeremy White



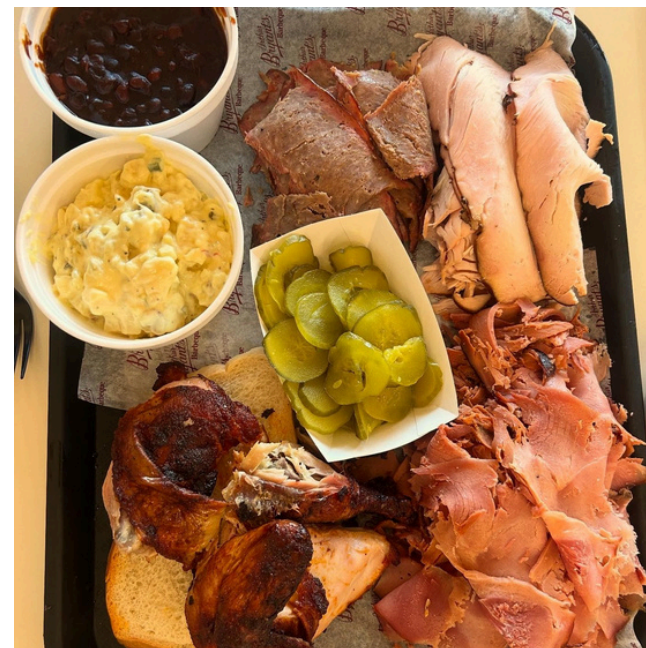
On June 17th and 18th, 2025, the AAPL held its Q2 Board Meeting at the Loews Kansas City Hotel in Kansas City, MO. As is customary for the June meeting, it was held in conjunction with the AAPL Annual Meeting, which was held the 18th through the 20th. The board meeting went smoothly as always under Nancy McCaskell's last time leading the board and the Annual Meeting was full of informative presentations. As a highlight, it was truly an honor to be able to stand alongside John Catsonis and Danny Cooper to accept the award on behalf of the MLBC for the 2025 Local Association of the Year during the opening night awards ceremony. The MLBC had a fantastic showing at the Annual Meeting.

Visiting Kansas City was a first for me and I really had no expectations – other than to eat some of their famous BBQ. The BBQ scene did not disappoint, and honestly, I ate more BBQ than I care to admit. The historic Arthur Bryant's Barbeque was a highlight. I was exactly as I imagined it – an aged brick building, a long line to the door filled with hungry folks waiting to place their counter service order, the mouth-watering smell of smokers rolling, and a cross section of humanity walking away with trays full of arguably the best BBQ to be found anywhere. Arthur Bryant's has attracted people from all over the globe – including past Presidents, celebrities, and professional athletes.

Jack Stack BBQ is another Kansas City staple. I first went to the Freight House location with a large group of colleagues attending the AAPL Annual Meeting and realized that eating BBQ buffet style with a large group is not the way to truly get the best BBQ. The dinner company was great, the conversation was good, but the food was average. That said, on Friday evening, I happened to be in the Country Club Plaza area of Kansas City, and I decided to give Jack Stack a second try at their Plaza location. Totally different experience. The burnt ends and ribs were amazing!

I made an attempt to eat at the famous Joe's Kansas City but it was unsuccessful. Joe's may have the most famous BBQ in Kansas City due to the late Anthony Bourdain proclaiming Joe's Kansas City as "having the best BBQ in Kansas City, which makes it the best BBQ in the world". When I showed up, there was a standing line on the sidewalk waiting to get inside. I was told that the wait was an hour to just get inside. I suppose that is a testament to the BBQ quality – but also a reason I decided to move on. I do know one local who was able to get a sit down there – Andy Graham. So, if you see Andy, make sure to ask him how it was!

Other than great BBQ, Kansas City is known for jazz. Fortunately, I was able to get the real jazz club experience at The Green Lady Lounge one evening with some other MLBC folks in town. The Green Lady is a quintessential old school jazz club – seedy exterior, posh interior. They only allow local Kansas City jazz musicians to play, and they must play their own original material. We enjoyed ourselves sipping cocktails and listening to Guitar Elation play in the round. Truly a great experience.



Other than BBQ and jazz, Kansas City houses the National World War I museum, Negro Leagues Baseball Museum, historic Union Station, and obviously the Super Bowl Champion Chiefs. If you enjoy history, I highly recommend the WWI museum. It is a well put together collection and a stark reminder of the ravages of war.

Energy Connection: I did not see a particular energy connection while in Kansas City. The closest group of landmen are in Wichita (the Wichita Association of Professional Landmen gifted each board member a nice box of gourmet chocolates by the way), but no real energy related activity around Kansas City. I did not see any evidence of the environmentalists at the other end of the spectrum either. Kansas City just seems to be that – a big city – with no particular identity, other than being located exactly in the crossroads of the middle of the country. As such, with logistics, it has become the large city that it is today.

As far as actual AAPL business, in addition to the individual Director's Reports, the following is a summary of the key points covered:

- **Treasurer's Report:** AAPL total assets are \$42,387,043, which is a slight increase of 0.3% YOY.
- **Revenues** (exclusive of investment revenue) year over year, have increased by 5.7% from \$2.874 M to \$3.037 M, a change of roughly \$163k.
- **Expenses** compared to this time last year have increased 2.2% to \$4.2 M, an increase of \$89k.
- **Other Notables:**
 - The new officer slate was inducted – including AAPL's new President, Kyle Reynolds and 1st VP Julie Woodard.
 - AAPL Membership has surpassed 11,000 members.
 - AAPL leadership continues to look for way to cut expenses – renegotiating things even as small as landscaping services, insurance, and electricity contracts.
 - AAPL is tracking 874 Federal/State bills – an increase of 76% in one quarter.
 - Preliminary research has begun and a contract has been signed for AAPL to host a "Texas Capital Market Conference" in conjunction with the Texas Blockchain Council Finance Summit at SMU in Dallas in October. The conference will be on October 8th and the summit will be held on the 9th and 10th. More details will be forthcoming.
 - A new Association Management Software will be implemented this fall. If you dislike the current AAPL website interface – I'm sure you will enjoy this upgrade.
 - Don't forget to regularly check the AAPL website for upcoming webinars. They conducted 40 webinars in the past year.
 - NAPE 2026 planning is in full swing and sponsors and exhibitors have already surpassed 2025 numbers – so make plans to be there

Sadly, this was my last time representing the MLBC as its Regional Director. I will be handing over the responsibility and privilege to the capable hands of Rob Griener to carry the torch for the next two years. I have full confidence that he will represent us well on the national stage. I have been fortunate for the last two years to visit places like Albuquerque, NM, Boston, MA, San Diego, CA, Newport, RI, Tulsa, OK, Traverse City, MI, and now Kansas City. It truly has been a privilege to serve in this capacity and be an ambassador for the MLBC around the country. As always, I would like to thank the MLBC for the opportunity to represent the organization and region as its AAPL Director. I would also like to thank Tenmile Land, and its ownership, for supporting my efforts to serve this term.

Sincerely,
Jeremy M. White
AAPL Director 2023-2025





Partners

Your Hometown Energy Partner

ACTIVELY ACQUIRING

- ☒ Leasehold Opportunities
- ☒ Wellbore-only Deals
- ☒ Working Interest in the Utica & Marcellus
- ☒ Purchasing or funding AFE's & Well Proposals
- ☒ Mineral & Royalty Interests

**OHIO OWNED
& OPERATED**



www.ogmplc.com | 740.284.1234



THANKS FROM KANSAS CITY!

Our 71st Annual Meeting is in the books and we cannot get over how much fun we had "exploring more" with hundreds of energy professionals from over 30 states and provinces in the BBQ Capital of the World.

From the Welcome Reception to the Closing Reception and all the world-class professional development sessions and tailored networking sessions in between, this year's Annual Meeting was one for the ages! Thanks to all attendees, sponsors, speakers and volunteers for making it happen.



THE PASSING OF THE GAVEL

During the Presidential Remarks & Membership Business Meeting, AAPL President Nancy McCaskell, CPL, passed the gavel to Incoming President Kyle Reynolds, CPL, which is just one of the unique time-honored traditions of Annual Meeting.

A massive thanks to both for their commitment to the land profession and for their continued support of AAPL and its mission. AAPL has been and will continue to be in great hands!

Show Kyle and Nancy some love on [LinkedIn](#).



SALT LAKE CITY
AAPL'S 72ND
ANNUAL MEETING
JUNE 24-26, 2026



THE NEW LANDMAN E-MAGAZINE IS HERE!

The digital July/August 2025 issue of the Landman magazine is now available for e-viewing.

Featured articles include: "The Kings in the North," "What Constitutes Oil, Gas and Other Minerals in a Changing Market," "Updates From the Field," "Preparing for the Next Election Cycle" and "AAPL Hosts Sold-Out Institutes."



READ THE NEWEST ISSUE



Member Spotlight

Jim Kane



Tell us a little about yourself.

I am a Pittsburgh area native who enjoys golfing, snowboarding, and fly fishing in my free time. After obtaining my undergraduate degree from The Catholic University of America in Washington D.C., I returned to Pittsburgh to pursue my law degree at Duquesne University. I currently reside in the North Hills of Pittsburgh with my wife and two daughters.

Who are you currently employed or contracted with?

I am a partner of Cassidy Anderson & Kane, P.C.

How long have you worked in the oil and gas industry? And what states do you have experience? And tell us about any other land organization you belong.

I have been working in the oil and gas industry since 2009, primarily in Pennsylvania, West Virginia, and Ohio. Over the years I have been active with the AAPL, EMLF, WEN, PITROW group, PIOGA, Marcellus Shale Coalition, Pittsburgh Petroleum Club, and IRWA Chapter 88.

Tell us about your first position in the industry.

My first position in the industry was working as a landman for an independent broker. What started as a position primarily focused on addressing curative items prior to drilling quickly turned into title researching and leasing throughout central and southwestern Pennsylvania.

What areas of the industry do you have experience in?

My time in the industry has included everything from leasing to preparing title status for drilling units in house. Currently, at Cassidy Anderson & Kane, my practice focuses on title and due diligence for oil and gas, pipelines, and coal operations. I've also spent time on various renewable projects both from a title perspective and contract drafting/negotiations.

Do you have a mentor in the industry? Can you provide details?

My first job in the industry was working with Larry Edelstein. Larry has remained a friend, colleague, and business partner for projects. During my time with Atlas/Chevron, my current partner, Renee Anderson, became both a friend and mentor to me and has remained so to this day. In addition to Larry and Renee, I had the pleasure of working with Mike Hartzell in the mentorship program at Chevron. Mike was an invaluable resource in learning about all the moving parts of our industry and helped to shape my career path at and beyond my time at Chevron.

How long have you been a member of the MLBC. Do you currently have any certifications through the AAPL?

I have been a member of the MLBC since 2014.

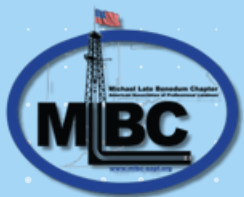
What benefits have you found as a member of the MLBC? What are your favorite aspects?

One of the most obvious benefits to the MLBC is the access to continuing education events. While I always appreciate the CLE credits, my favorite aspect of the events is the consistent opportunity to grow my relationships with other professionals in the energy industry.

Do you serve the MLBC, AAPL, or any other organizations in an executive capacity and/or serve as a committee chair? Are you a member of any committees?

I have previously served on the Executive Committee for the Northern Appalachian Landman's Association and the Board of Trustees for the Energy and Mineral Law Foundation.

Currently, I serve as a Local Director on the MLBC Executive Committee and the Spring Golf Committee Chair. I am also serving on the Board of Directors for the MLBC Foundation, our charitable arm of the MLBC.



ANNUAL AWARDS & SCHOLARSHIP EVENT RECAP

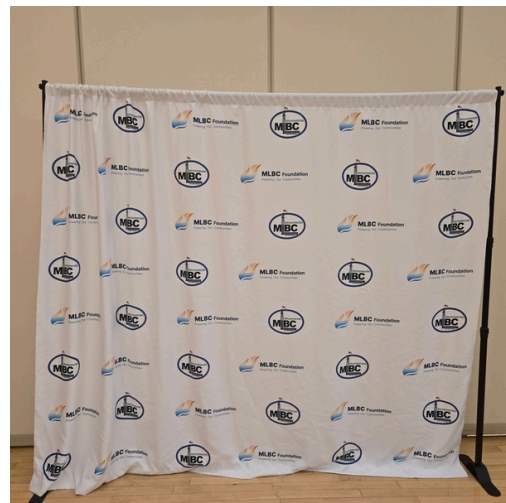
The Erickson Alumni Center in Morgantown, WV was filled with members new and old to celebrate our annual award and scholarship winners. A huge thank you to our happy hour sponsor, **Western Land Services** and our dinner sponsor, **Blue Duck Resources** for making the event possible. The night kicked off by awarding this years MLBC Foundation Scholarship Recipients. Four scholarships were awarded in total but due to summer internships, only one student was able to be present to accept. The night continued with the presentations of our annual awards. The following awards were presented:

- **Best Member Communication:** John Catsonis for his article titled "A Few Good Landmen" in the October, 2024 edition of the Wildcatter.
- **Friend of the MLBC Award:** Daniel Cooper
- **Landman of the Year:** Aaron Yost (view award video [here](#))
- **Lifetime Achievement:** Bruce Turner (accepted by Steve Purdue) (view award video [here](#)).



You can view all award winners pictures and other event pictures [here](#).

The night ended with the introduction of incoming president Kevin Pierson and his Executive committee and recognition of outgoing president John Catsonis.



ANNUAL AWARDS & SCHOLARSHIP EVENT RECAP



Left to Right: Scholarship committee members Daniel Cooper, Rob Greiner, Scholarship Recipient Scott Nichols and committee member Tyler Compston.

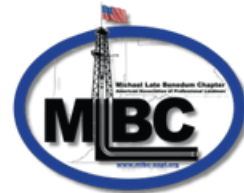


Left to Right: Awards Chairman David Stockman, Landman of the Year Recipient, Aaron Yost and Award Presenter, Stacy Tichy



Left to Right: AAPL Regional Director, Rob Greiner, President Emeritus, John Catsonis, Local Director, Matt White, President, Kevin Pierson, Vice President, Stacy Tichy, Treasurer, Danny Cooper, Sgt At Arms, Chuck Saffer and Local Director, Jim Kane. (not pictured, Secretary, Ben McKinney and Local Director Bill O'Brien.)

SUMMER Social



JULY 2, 2025 - PNC PARK PITTSBURGH, PA







MLBC FALL CHARITY GOLF

BENEFITTING WVU CHILDREN'S HOSPITAL

18
AUG

10AM SHOTGUN START
BRIDGEPORT COUNTRY CLUB
Bridgeport, WV



 **WVU** Medicine Children's

REGISTER

SPONSORSHIP GOLF OPPORTUNITIES

DIAMOND SPONSORS - \$2250

Four (4) golf/food registrations, PRESENTING SPONSOR signage during registration, meal, and awards, additional signage on tee boxes MLBC Newsletter recognition, and event and website recognition



EAGLE SPONSOR - \$1750

Four (4) golf/dinner registrations, TENT on the course, signage during registration, tee box, meal, and awards, and event and website recognition



BIRDIE SPONSOR - \$1250

Four (4) golf/dinner registrations, signage during registration, tee box, meal, and awards, and event and website recognition



PAR SPONSOR - \$1000

Company name and logo on one (1) tee box sign and the ability to put up a tent with drinks, music, and/or games for the players, and website recognition

PERSONALIZED SPONSORSHIPS - \$ VARIES

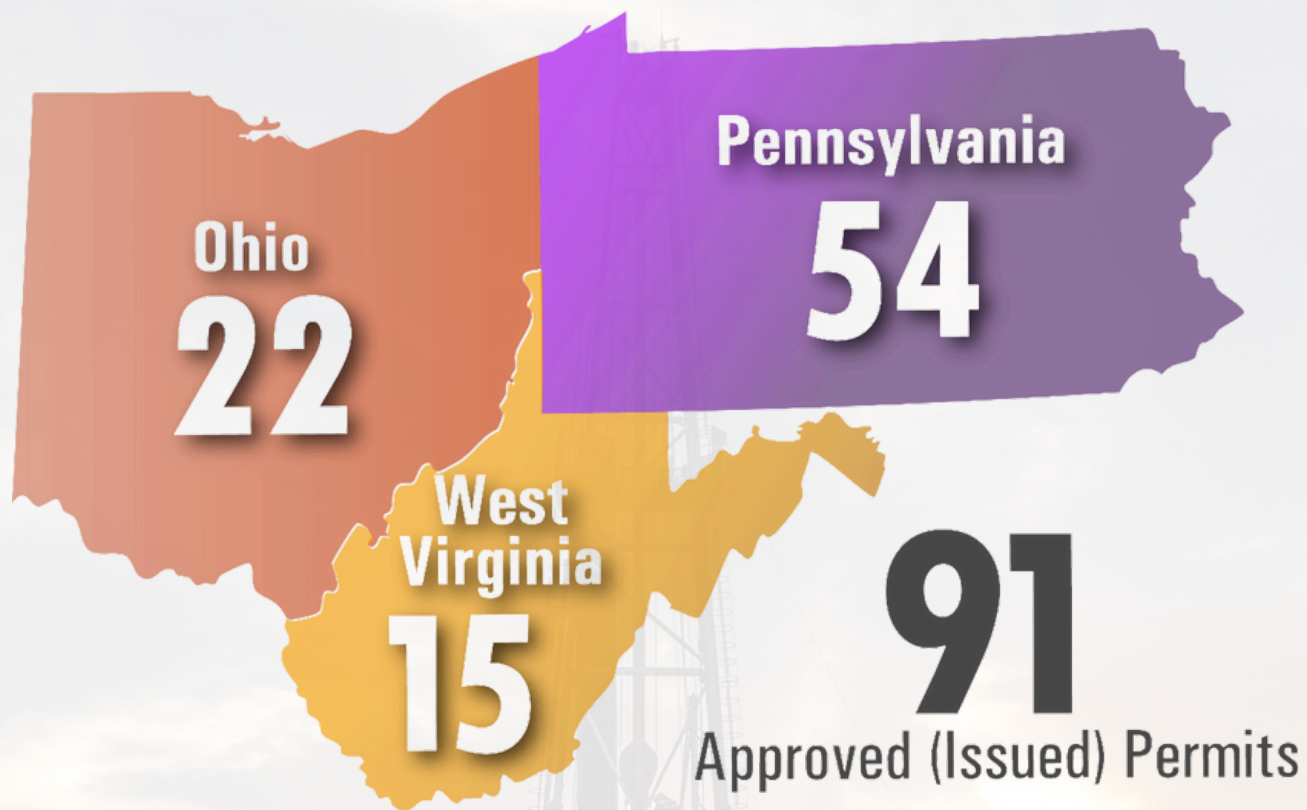
If you are looking for a more personalized way to reach individual golfers, contact us and we can show you available options, or we would be happy to pass out your company swag (ex. Tumblers, golf towels, golf balls)

TEE SPONSOR - \$500

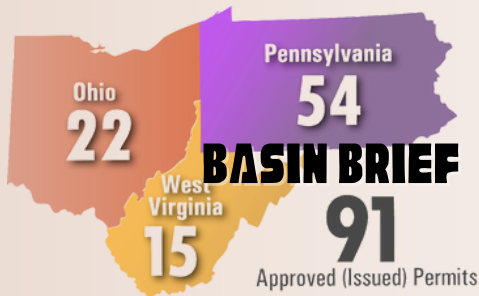
Company name and logo on a tee box sign and website recognition

PLEASE CONTACT ABBY VEIGEL AT ABBYVEIGEL@MLBC-AAPL.ORG OR
FALL GOLF CHAIR MATT WHITE AT [MATT.WHITE@STEPTOE-
JOHNSON.COM](mailto:MATT.WHITE@STEPTOE-JOHNSON.COM) TO RESERVE YOUR SPOT!

BASIN BRIEF



BASIN ACTIVITY INFORMATION PROVIDED BY AYERS PETROLEUM CONSULTING AND IS CURRENT OF JULY 2025.

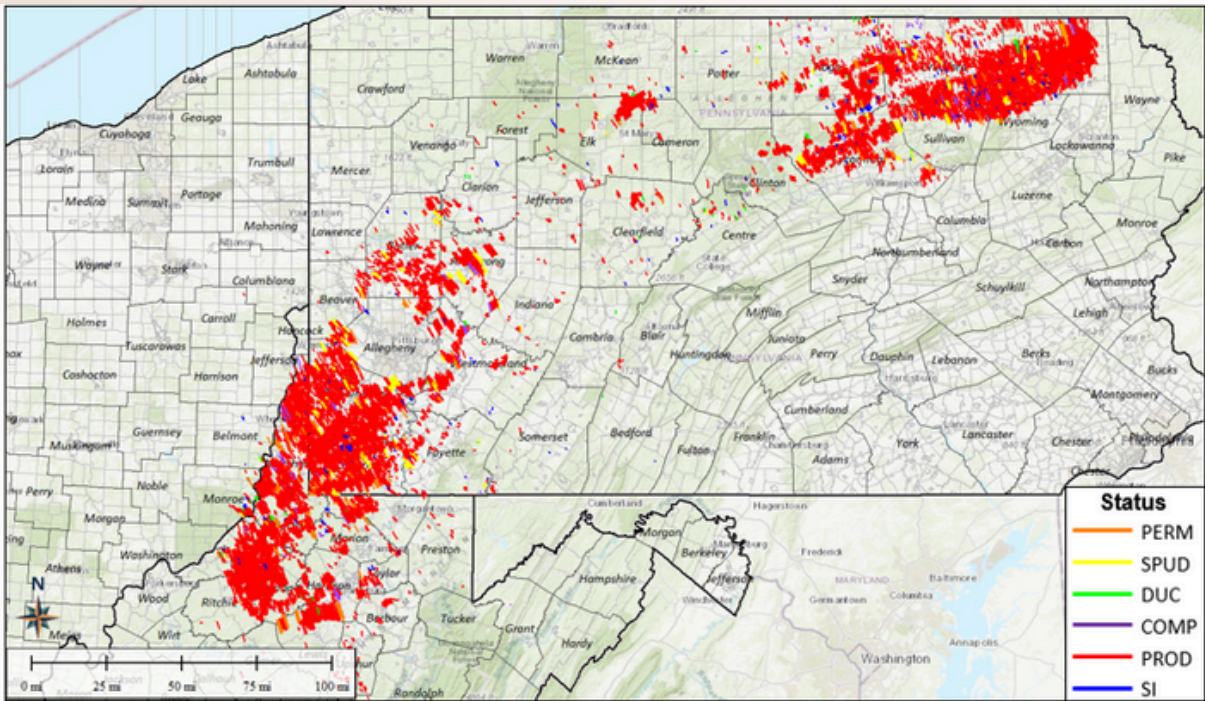


PERMIT DETAILS

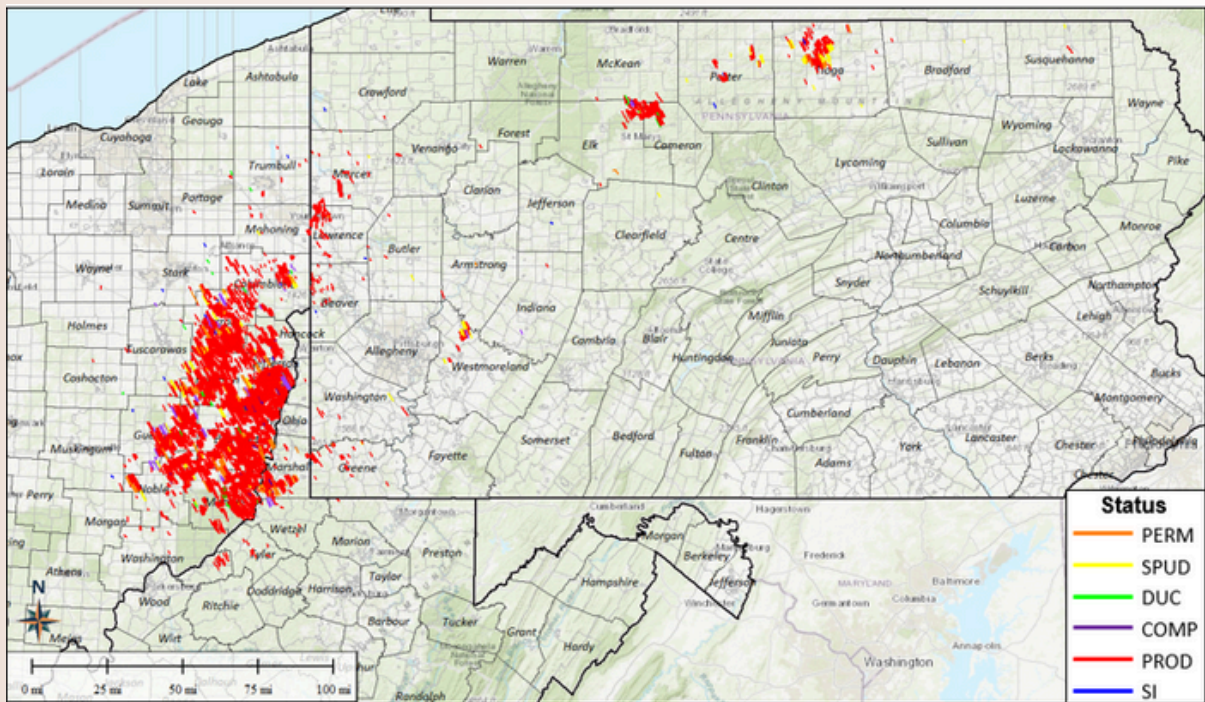
NO.	API	COUNTY	OPERATOR	PERMIT DATE	RESERVOIR
1	34-013-21635-0000	Belmont	Ascent	06/02/2025	Utica
2	34-067-21851-0000	Harrison	Ascent	06/03/2025	Utica
3	34-067-21852-0000	Harrison	Ascent	06/03/2025	Utica
4	34-067-21853-0000	Harrison	Ascent	06/03/2025	Utica
5	34-111-25017-0000	Monroe	Gulfport	06/04/2025	Utica
6	34-019-22933-0000	Carroll	Enclino	06/09/2025	Utica
7	34-019-22934-0000	Carroll	Enclino	06/09/2025	Utica
8	34-067-21804-0000	Harrison	Enclino	06/10/2025	Utica
9	34-067-21807-0000	Harrison	Enclino	06/10/2025	Utica
10	34-059-24725-0000	Guernsey	Ascent	06/23/2025	Utica
11	34-019-22925-0000	Carroll	Enclino	06/24/2025	Utica
12	34-067-21854-0000	Harrison	EOG Resources	06/24/2025	Utica
13	34-067-21855-0000	Harrison	EOG Resources	06/24/2025	Utica
14	34-067-21856-0000	Harrison	EOG Resources	06/24/2025	Utica
15	34-067-21857-0000	Harrison	EOG Resources	06/24/2025	Utica
16	34-019-22926-0000	Carroll	Enclino	06/26/2025	Utica
17	34-019-22928-0000	Carroll	Enclino	06/26/2025	Utica
18	34-059-24726-0000	Guernsey	Ascent	06/30/2025	Utica
19	34-059-24727-0000	Guernsey	Ascent	06/30/2025	Utica
20	34-059-24728-0000	Guernsey	Ascent	06/30/2025	Utica
21	34-059-24729-0000	Guernsey	Ascent	06/30/2025	Utica
22	34-067-21858-0000	Harrison	Ascent	06/30/2025	Utica
23	37-117-22289	Tioga	Seneca	06/03/2025	Utica
24	37-117-22290	Tioga	Seneca	06/03/2025	Utica
25	37-117-22291	Tioga	Seneca	06/03/2025	Utica
26	37-117-22292	Tioga	Seneca	06/03/2025	Utica
27	37-117-22293	Tioga	Seneca	06/03/2025	Utica
28	37-117-22294	Tioga	Seneca	06/03/2025	Utica
29	37-059-26987	Greene	EQT	06/04/2025	Marcellus
30	37-059-26988	Greene	EQT	06/04/2025	Marcellus
31	37-059-27481	Greene	EQT	06/04/2025	Marcellus
32	37-059-27486	Greene	EQT	06/04/2025	Marcellus
33	37-113-20493	Sullivan	Sabre Energy	06/04/2025	Marcellus
34	37-019-22990	Butler	Laurel Mountain	06/09/2025	Marcellus
35	37-081-22045	Lycoming	PA Gen Energy	06/09/2025	Marcellus
36	37-081-22046	Lycoming	PA Gen Energy	06/09/2025	Marcellus
37	37-081-22047	Lycoming	PA Gen Energy	06/09/2025	Marcellus
38	37-081-22048	Lycoming	PA Gen Energy	06/09/2025	Marcellus
39	37-081-22049	Lycoming	PA Gen Energy	06/09/2025	Marcellus
40	37-081-22050	Lycoming	PA Gen Energy	06/09/2025	Marcellus
41	37-081-22051	Lycoming	PA Gen Energy	06/09/2025	Marcellus
42	37-081-22052	Lycoming	PA Gen Energy	06/09/2025	Marcellus
43	37-115-23203	Susquehanna	Expand Energy	06/10/2025	Marcellus
44	37-115-23204	Susquehanna	Expand Energy	06/10/2025	Marcellus
45	37-081-22054	Lycoming	Range Resources	06/11/2025	Marcellus
46	37-081-22055	Lycoming	Range Resources	06/11/2025	Marcellus
47	37-081-22056	Lycoming	Range Resources	06/11/2025	Marcellus
48	37-081-22057	Lycoming	Range Resources	06/11/2025	Marcellus
49	37-081-22058	Lycoming	Range Resources	06/11/2025	Marcellus
50	37-081-22059	Lycoming	Range Resources	06/11/2025	Marcellus
51	37-059-28393	Greene	EQT	06/12/2025	Marcellus
52	37-059-27862	Greene	EQT	06/16/2025	Marcellus
53	37-117-22300	Tioga	Seneca	06/16/2025	Marcellus
54	37-117-22301	Tioga	Seneca	06/16/2025	Marcellus
55	37-117-22302	Tioga	Seneca	06/16/2025	Marcellus
56	37-117-22303	Tioga	Seneca	06/16/2025	Marcellus
57	37-117-22304	Tioga	Seneca	06/16/2025	Marcellus
58	37-125-29167	Washington	Range Resources	06/16/2025	Marcellus
59	37-125-29168	Washington	Range Resources	06/16/2025	Marcellus
60	37-125-29171	Washington	Range Resources	06/16/2025	Marcellus
61	37-081-22038	Lycoming	Expand Energy	06/18/2025	Marcellus
62	37-129-29235	Westmoreland	EQT	06/18/2025	Marcellus
63	37-129-29236	Westmoreland	EQT	06/18/2025	Marcellus
64	37-129-29237	Westmoreland	EQT	06/18/2025	Marcellus
65	37-129-29272	Westmoreland	EQT	06/18/2025	Utica
66	37-129-29273	Westmoreland	EQT	06/18/2025	Utica
67	37-063-37567	Indiana	INR Operating	06/23/2025	Marcellus
68	37-115-23205	Susquehanna	Coterra	06/23/2025	Marcellus

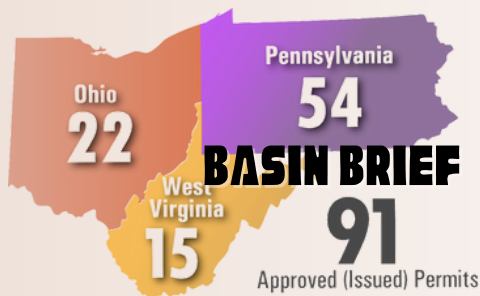
69	37-125-29114	Washington	Range Resources	06/23/2025	Marcellus
70	37-125-29115	Washington	Range Resources	06/23/2025	Marcellus
71	37-059-28474	Greene	EQT	06/26/2025	Burket
72	37-059-28475	Greene	EQT	06/26/2025	Marcellus
73	37-059-28476	Greene	EQT	06/26/2025	Marcellus
74	37-059-28477	Greene	EQT	06/26/2025	Marcellus
75	37-059-28478	Greene	EQT	06/26/2025	Marcellus
76	37-059-28479	Greene	EQT	06/26/2025	Marcellus
77	47-049-02585	Marion	Northeast Natural	06/02/2025	Marcellus
78	47-033-06107	Harrison	Arsenal	06/06/2025	Marcellus
79	47-033-06108	Harrison	Arsenal	06/06/2025	Marcellus
80	47-033-06109	Harrison	Arsenal	06/06/2025	Marcellus
81	47-033-06110	Harrison	Arsenal	06/06/2025	Marcellus
82	47-051-02555	Marshall	Expand Energy	06/18/2025	Marcellus
83	47-051-02556	Marshall	Expand Energy	06/18/2025	Marcellus
84	47-051-02557	Marshall	Expand Energy	06/18/2025	Marcellus
85	47-051-02558	Marshall	Expand Energy	06/18/2025	Marcellus
86	47-033-06111	Harrison	Arsenal	06/26/2025	Marcellus
87	47-033-06112	Harrison	Arsenal	06/26/2025	Marcellus
88	47-049-02588	Marion	Northeast Natural	06/26/2025	Marcellus
89	47-049-02589	Marion	Northeast Natural	06/26/2025	Marcellus
90	47-069-00378	Ohio	Expand Energy	06/30/2025	Marcellus
91	47-069-00379	Ohio	Expand Energy	06/30/2025	Marcellus

MARCELLUS WELLS BY STATUS



UTICA WELLS BY STATUS





PERMITTING SUMMARY BY STATE

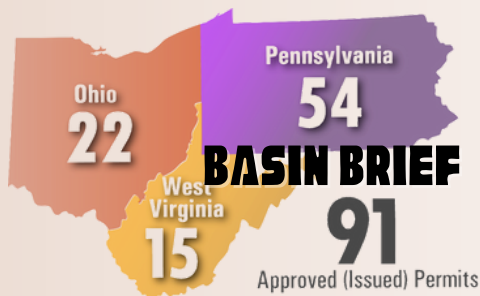
STATE	JAN	FEB	MAR	APR	MAY	JUN	JUL	AUG	SEP	OCT	NOV	DEC
OH	26	27	14	40	33	22	-	-	-	-	-	-
PA	51	40	62	59	58	54	-	-	-	-	-	-
WV	11	15	9	14	23	15	-	-	-	-	-	-
TOTAL	88	82	85	113	114	91	-	-	-	-	-	-

PERMITTING SUMMARY BY OPERATOR

OPERATOR	JAN	FEB	MAR	APR	MAY	JUN	JUL	AUG	SEP	OCT	NOV	DEC	TOTAL
EQT	31	7	12	20	15	17	-	-	-	-	-	-	102
Encino	1	15	-	20	14	7	-	-	-	-	-	-	57
Range Resources	3	13	9	15	4	11	-	-	-	-	-	-	55
Expand Energy	8	15	5	7	8	9	-	-	-	-	-	-	52
Seneca	-	3	13	7	14	11	-	-	-	-	-	-	48
Ascent	4	3	10	5	8	10	-	-	-	-	-	-	40
Pennenergy	-	7	11	-	3	-	-	-	-	-	-	-	21
CNX	-	-	-	10	11	-	-	-	-	-	-	-	21
Coterra	4	-	5	6	3	1	-	-	-	-	-	-	19
EOG Resources	7	-	-	4	4	4	-	-	-	-	-	-	19
Others (20)	30	19	20	19	30	21	-	-	-	-	-	-	139
TOTAL	88	82	85	113	114	91	-	-	-	-	-	-	573

HORIZONTAL WELLS BY RESERVOIR BY STATUS

RESERVOIR	PERM	SPUD	DUC	COMP	PROD	SI	TOTAL
Marcellus	145	85	39	78	3,554	42	3,943
Utica	231	551	68	108	11,965	334	13,257
Burket	230	4	18	71	4,055	35	4,413
TOTAL	606	640	125	257	19,574	411	21,613



PRODUCING WELL COUNT BY RESERVOIR

RESERVOIR	OH	PA	WV	TOTAL
Marcellus	41	11,249	3,899	15,189
Utica	3,513	425	124	4,062
Burket	-	291	32	323
TOTAL	3,554	11,965	4,055	19,574

PRODUCING MARCELLUS WELLS

OPERATOR	OH	PA	WV	TOTAL
Expand Energy	29	2,385	684	3,098
EQT	5	2,073	956	3,034
Range Resources	-	1,575	-	1,575
Antero	-	-	1,295	1,295
Coterra	-	1,086	-	1,086
Seneca	-	822	-	822
Repsol	-	770	-	770
CNX	1	478	93	572
Pennenergy	-	347	-	347
XTO Energy	-	266	54	320
Others (53)	6	1,447	817	2,270
TOTAL	41	11,249	3,899	15,189

PRODUCING UTICA WELLS

OPERATOR	OH	PA	WV	TOTAL
Encino	1,078	-	-	1,078
Ascent	931	-	-	931
Gulfport	467	-	-	467
EQT	189	15	86	290
Antero	241	-	1	242
Expand Energy	216	1	5	222
Seneca	-	189	-	189
Hilcorp	88	97	-	185
INR Operating	118	-	-	118
CNX	45	28	5	78
Others (19)	140	95	27	262
TOTAL	3,513	425	124	4,062

2025 VETERANS CHARITY CLAY SHOOT

THURSDAY, SEPTEMBER 25, 2025

181 HUNTING HILLS RD, DILLINER, PA 15327

9:00 AM CHECK-IN | 10:00 AM START

Whether you're an experienced shooter or trying clay shooting for the first time, this event promises fun and excitement for everyone. All proceeds benefit the WVU Veterans Advocacy Law Clinic!

Interested in Sponsoring?

\$5,000	Premier	(3) teams, (12) t-shirts, (1) sponsored station
\$3,000	Platinum	(2) teams, (8) t-shirts, (1) sponsored station
\$2,000	Gold	(1) team, (4) t-shirts, (1) sponsored station
\$500	Silver	(1) station sign with your logo

PRIZES
\$5,000+



For More Information
tmurrayenne-llc.com



Visit Our Website
www.mlbcfoundation.org



2025 MLBC VETERANS CHARITY CLAY SHOOT GENEROUSLY SPONSORED BY:



Professional Land Services



TENMILE LAND



COTERRA



PERCHERON



Land Management



STAY CONNECTED!

Follow us on our social media channels for news & updates!



@mlbc-aapl



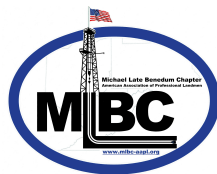
Michael Late Benedum
Chapter of AAPL



@mlbc-aapl



@mlbc_aapl



www.mlbc-aapl.org

WE ARE HIRING:

Join Our Growing Team!

- ***Title Abstractor***
- ***Title Reviewer***
- ***Acquisition Agent***

E. Ohio • SW Pennsylvania • N. West Virginia

For consideration, submit your resume to:

info@blueduckres.com





UPCOMING EVENTS 2025

FALL CHARITY GOLF

AUG 18, 2025 • 10AM-4PM



Bridgeport Country Club

FALL CHARITY CLAY SHOOT

SEPT 25 2025 • 9AM- 3PM



Hunting Hills Reserve

HAPPY HOUR PRESENTED BY WOMLBC

OCT 29, 2025 • 5:30PM-7:30PM



Short Story Brewing and Bunkers, Morgantown



EDUCATIONAL LUNCH

OCTOBER 16, 2025 • 11:30AM-1:30PM



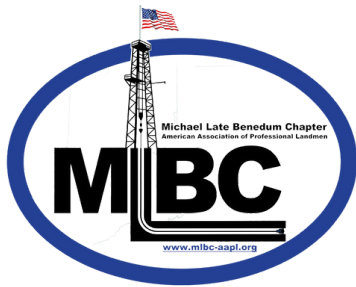
The Galley, Marietta, OH

WINTER SEMINAR

DECEMBER 4, 2025 • 1PM-6PM



Southpointe Golf Club



2025-2026 EXECUTIVE COMMITTEE

PRESIDENT



Kevin Pierson
Blue Duck Resources
kp@blueduckres.com

VICE PRESIDENT



Stacy Tichy, RPL
Percheron, LLC
stacy.tichy@percheronllc.com

SECRETARY



Ben McKinney
Step toe and Johnson
ben.mckinney@step toe-johnson.com

TREASURER



Daniel Cooper
OGM Partners LLC
daniel@ogmpllc.com

SGT. AT ARMS



Chuck Saffer
Babst Calland
CSaffer@babstcalland.com

LOCAL DIRECTOR



Jim Kane
Cassidy Anderson & Kane, P.C.
jkane@cassidykc.com

LOCAL DIRECTOR



Matt White
Step toe and Johnson
matt.white@step toe-johnson.com

LOCAL DIRECTOR



Bill O'Brien
Step toe and Johnson
Bill.O'Brien@step toe-johnson.com

REGIONAL DIRECTOR



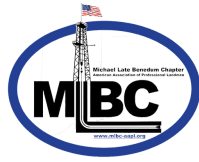
Rob Greiner
OGM Partners LLC
rob@ogmpllc.com

PRESIDENT EMERITUS



John Catsonis
Apex Land Corp.
jcatsonis@apexlandcorp.com

2025-2026



COMMITTEE CHAIRS

TECHNOLOGY



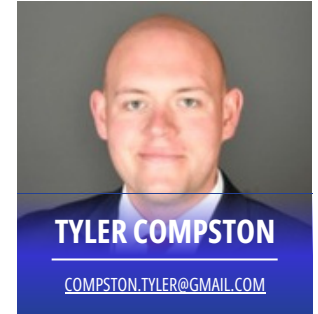
SPONSORSHIP



HISTORIAN



SCHOLARSHIP UNIVERSITY LIASON



CO-EDUCATION



CO-EDUCATION



LEGISLATIVE



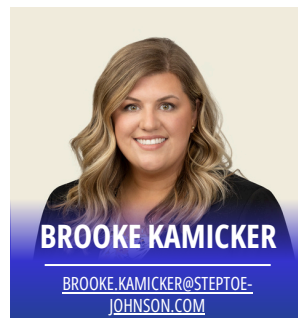
AWARDS



MARKETING



WOMEN OF THE MLBC



CLAY SHOOT



MEMBERSHIP



NEWSLETTER



ETHICS



FINANCE



SPRING GOLF



FALL GOLF



MLBC MEMBERSHIP REPORT

AUGUST 2025



MEMBERSHIP BY THE NUMBERS

Total Members:	585	Total Active:	377
Active:	345	% Active:	64.44%
Active PP:	32		
Honorary:	10	Associate :	101
		Student:	97

First Name	Last Name	Employer	Member Type	Sponsoring Member
Brandon	Abbott	Greylock Energy Company	Active	Joshua Wilson
Dwight	Bullough	Blue Duck Resources	Active	Kevin Pierson
John	Liggett	Blue Duck Resources	Active	Kevin Pierson
Kayla	McConahy	Morris Mountaineer Mineral Management	Active	Adam Marshok
Lisa	Cattafesta	Jay-Bee Oil & Gas	Active	Natalie Haddix
Natalie	Eisenhauer	Steptoe & Johnson PLLC	Associate	Michael Eisenhauer

SHOUT OUT!

Congratulations to the following member(s) recently gaining their Certification through the AAPL :

Matthew Gorby - RPL Certification

Jerome Dri - RPL Certification

Jakob Smith - RPL Certification



New members are approved on a monthly basis. If the need arises to move along membership approval (ex. Ohio Landman Registration), please email Abby Veigel - abbyveigel@mlbc-aapl.org

MEMBERSHIP INFORMATION



John Catsonis, Jeremy White, Gunner Fox, Rob Greiner and Jim Kane at the AAPL Annual Meeting

The MLBC membership application is located on the website at www.mlbc-aapl.org. Please check your information on the website prior to submitting your renewal. The [MLBC website](http://www.mlbc-aapl.org) has an updated version of the membership listing. Please use this resource if you cannot find yours or others information in the directory. Please report any errors or omissions to Abby Veigel at abbyveigel@mlbc-aapl.org.

Application for membership in the Association shall be subject to the approval by a majority vote of the Executive Committee at a regularly scheduled meeting and shall require the signed approval by the acting President of the Executive Committee, as evidence of the Committee's approval.

Notice of the approved application(s) of all potential Association member(s) shall be printed in the next regularly scheduled publication of the Association. Members shall have the opportunity for a period of thirty (30) days following the publication to object to the potential member's application.

